

MAPLE LEAF HOMES



Cottages

MAPLE LEAF HOMES

Every Maple Leaf Home is manufactured with high quality materials by experienced craftsmen. You can take comfort in knowing that your investment will be protected by some of the best warranties in the Industry.

- One year Maple Leaf Home manufacturer's warranty against defects in materials and workmanship.
- Limited lifetime warranty on roofing shingles provided by shingles manufacturer.
- Limited lifetime warranty on vinyl siding provided by siding manufacturer.
- Limited lifetime warranty on fixtures provided by fixtures manufacturer.
- Limited lifetime warranty available on windows by the window manufacturer.
- 10 year limited structural warranty available through Atlantic Home Warranty Corporation (available in Atlantic Canada).



WHY CHOOSE A MAPLE LEAF HOME?



- Locally owned and operated since 1985
- Award winning manufacturer for energy efficiency and customer satisfaction
- Industry leading manufacturer of energy efficient homes
- Energuide and Energy-Star certified builder
- Over 30 convenient locations to serve you better throughout Atlantic Canada, Quebec, Ontario and the New England States
- The most comprehensive warranties in the industry to protect your investment
- High quality custom cabinetry and interior finishes
- Efficiently manufactured indoors in a controlled environment
- In-plant quality control for every step of the manufacturing process ensures a top quality product that meets or exceeds the most up to date building codes
- Accurate scheduling – no weather delays
- No cost overruns – no waiting for sub contractors
- Environmentally friendly production – waste is reduced and recycling is maximized
- Plywood floor and wall construction
- Pre-engineered and individually custom built
- Premium building materials to assure top performance and service
- Professionally designed plans to ensure functionality for comfortable living
- Quality and innovations that are responsive to your living needs and wishes
- Custom designed plans

All Maple Leaf Homes include these standard features:

- Limited lifetime warranty on roof shingles
- Limited lifetime warranty on vinyl siding
- High quality designer cabinets
- Kiln dried lumber
- Quality plumbing fixtures
- Plywood floor and wall construction
- Painted wood interior trim (no MDF)
- Energy efficient
- 30 year warranty on windows

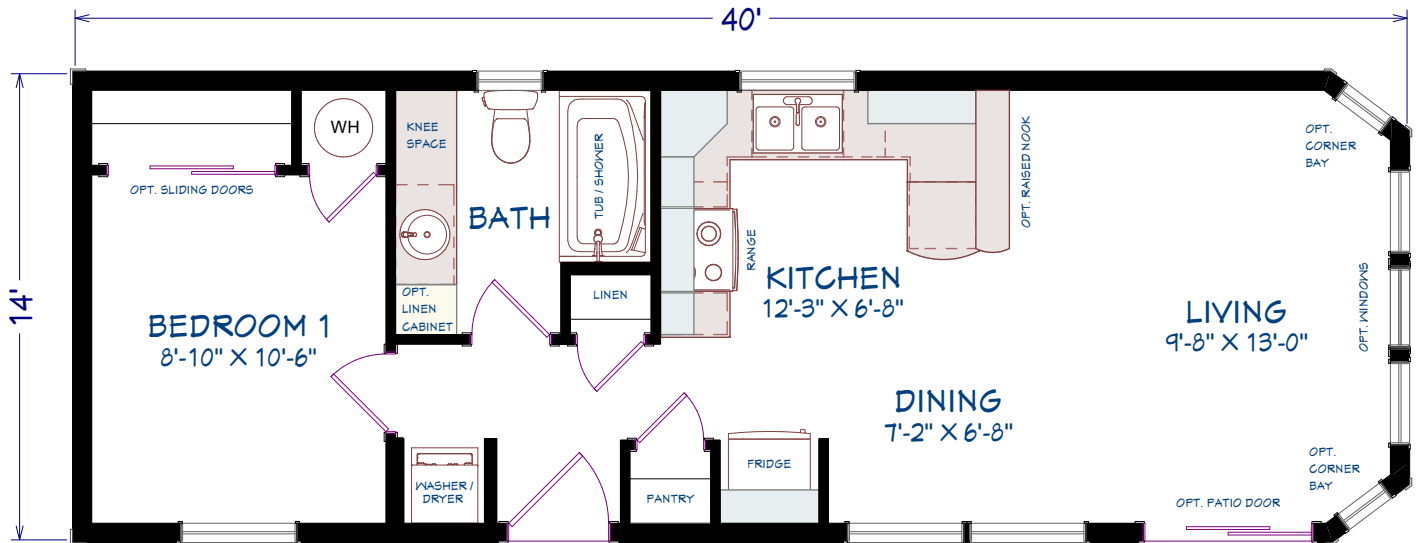
ML401
COTTAGE



560 SQUARE FEET
40' x 14' DIMENSIONS
1 BEDROOM
1 BATHROOM

OPTIONS

- Small dormer
- Large dormer
- Stone vinyl siding
- Front door, painted, 3/4 glass
- Patio door
- Mulled living room window
- No window grills
- Corner bay and windows
- Cathedral ceiling
- Appliances



1 BEDROOM, 1 BATHROOM
556 SQ FT

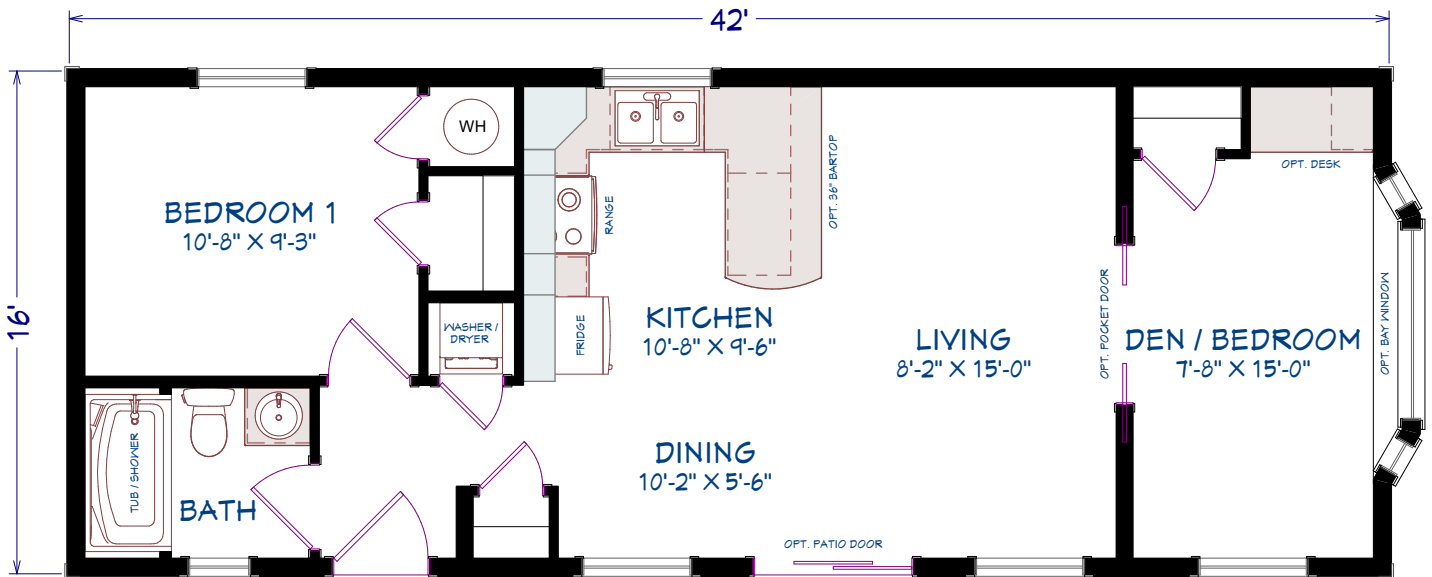
ML402
COTTAGE



672 SQUARE FEET
42' x 16' DIMENSIONS
2 BEDROOMS
1 BATHROOM

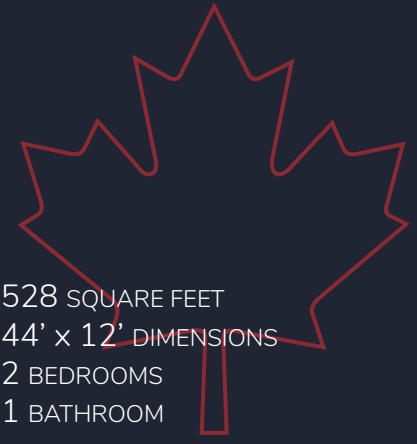
OPTIONS

- Small dormer
- Large dormer
- Bay window
- Front door, painted, 3/4 glass
- Patio door
- Upper window grills
- 3 1/2" Window and door trim
- Window and door colour
- Coloured siding accessories
- Appliances



2 BEDROOMS, 1 BATHROOM
672 SQ FT

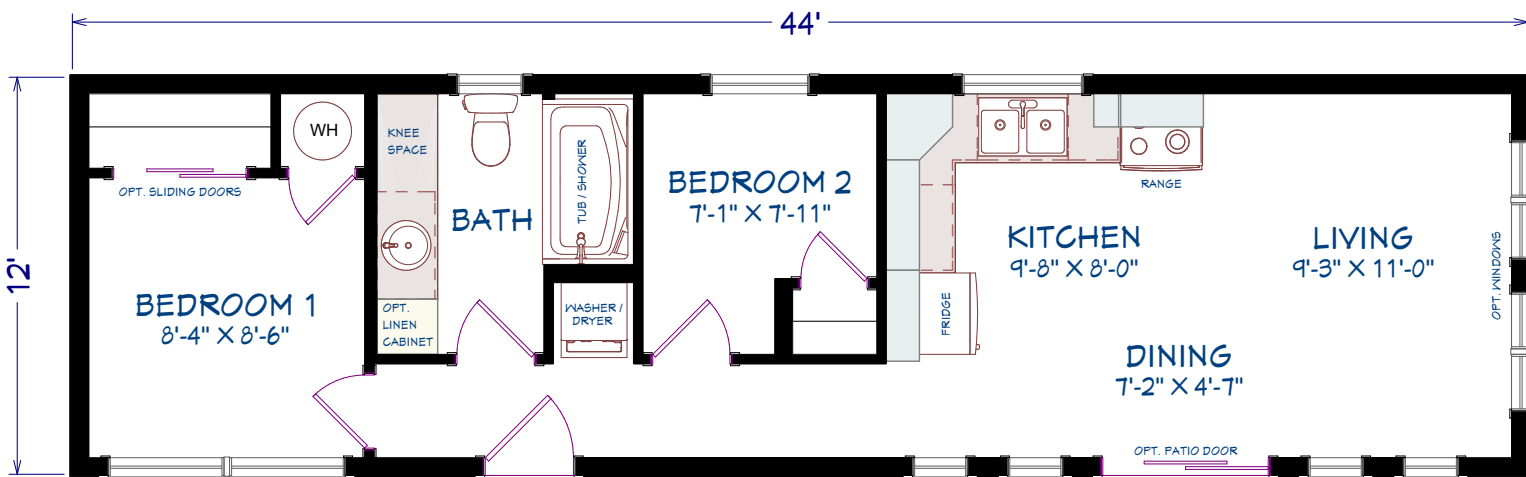
ML403
COTTAGE



528 SQUARE FEET
44' x 12' DIMENSIONS
2 BEDROOMS
1 BATHROOM

OPTIONS

- Small dormer
- Large dormer
- Front door, painted, full glass
- Patio door
- Queen Anne window grills
- 3 1/2" Window and door trim
- Pillars
- Second coach light
- Living room gable windows
- Cathedral ceiling
- Appliances



2 BEDROOMS, 1 BATHROOM
528 SQ FT

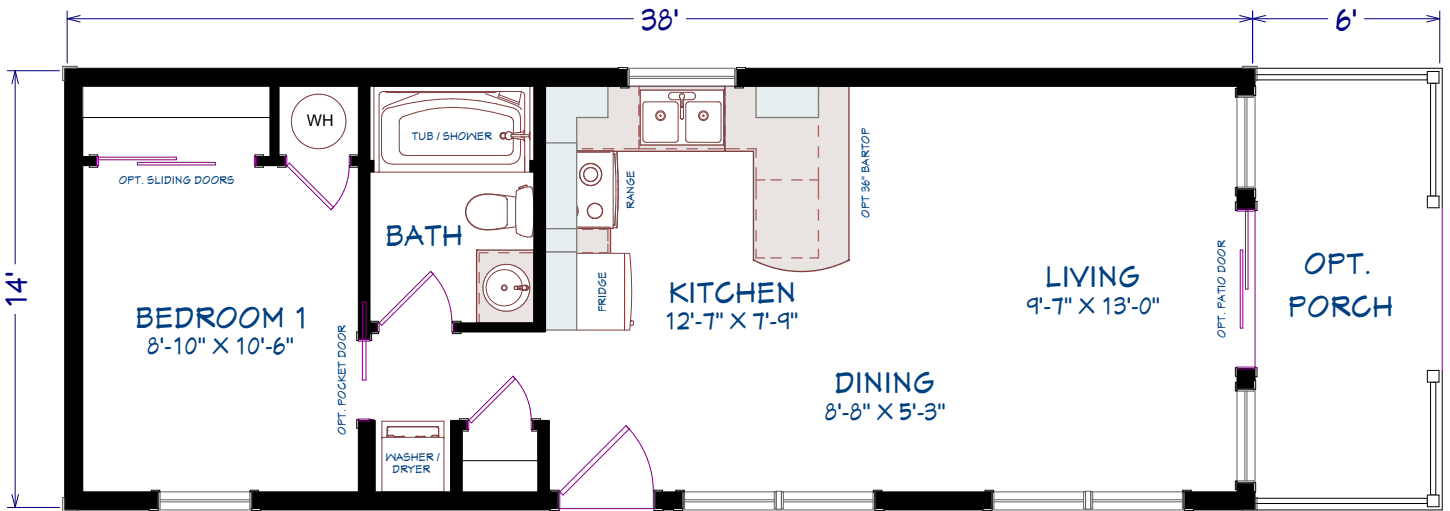
ML404
COTTAGE



532 SQUARE FEET
38' x 14' DIMENSIONS
1 BEDROOM
1 BATHROOM

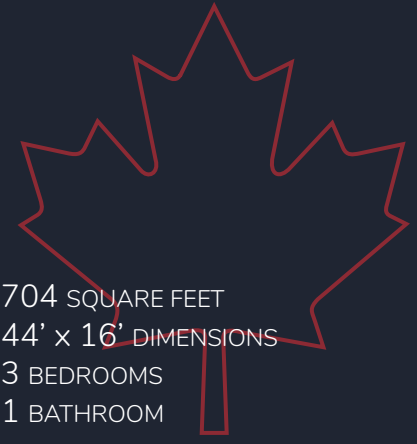
OPTIONS

- Small dormer
- Porch, railings and roof
- Front door, painted, 3/4 glass
- Patio door
- No window grills
- Shake vinyl siding
- 3 1/2" Window and door trim
- Appliances



1 BEDROOM, 1 BATHROOM
532 SQ FT

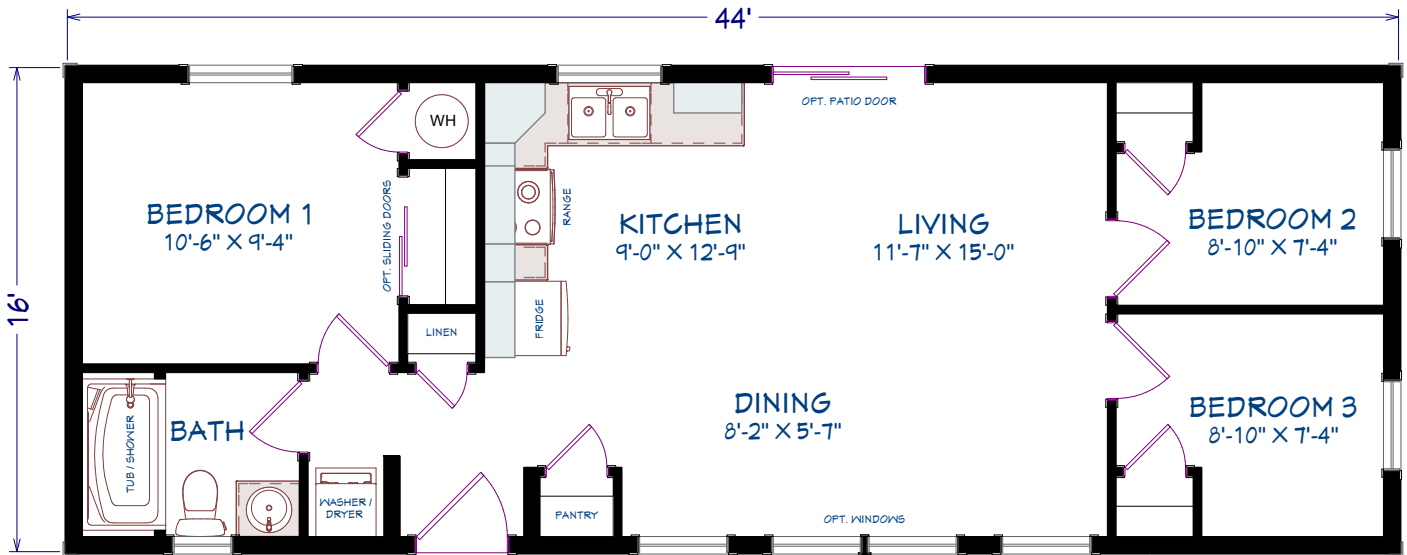
ML405
COTTAGE



704 SQUARE FEET
44' x 16' DIMENSIONS
3 BEDROOMS
1 BATHROOM

OPTIONS

- Colonial Entrance
- Large dormer
- Front door, painted, 3/4 glass
- 3 1/2" Window and door trim
- Shake vinyl siding
- Patio door
- Extra living room windows
- Extra coach light
- Appliances



3 BEDROOMS, 1 BATHROOM
704 SQ FT

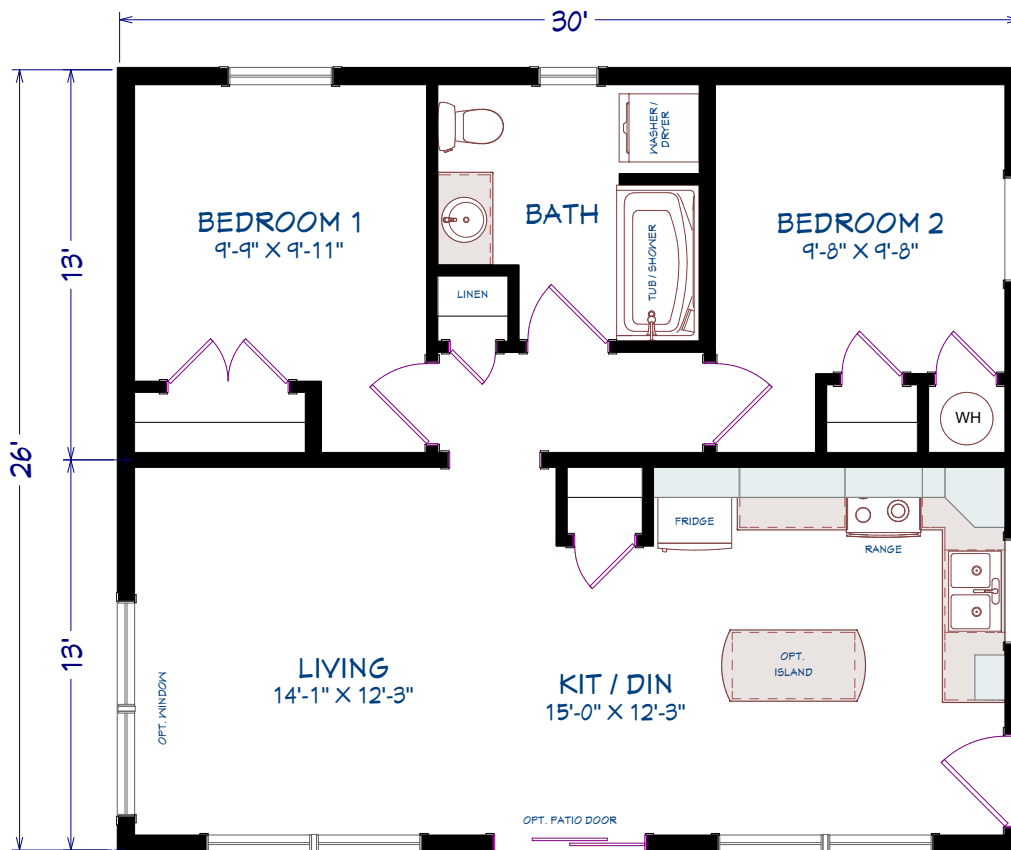
ML406
COTTAGE



780 SQUARE FEET
30' x 26' DIMENSIONS
2 BEDROOMS
1 BATHROOM

OPTIONS

- Large dormer
- Eyebrow dormer
- Front door, painted, 3/4 glass
- Patio door
- Extra coach light
- Upper window grill
- 64" High windows
- Extra living room window
- Appliances



2 BEDROOMS, 1 BATHROOM
780 SQ FT

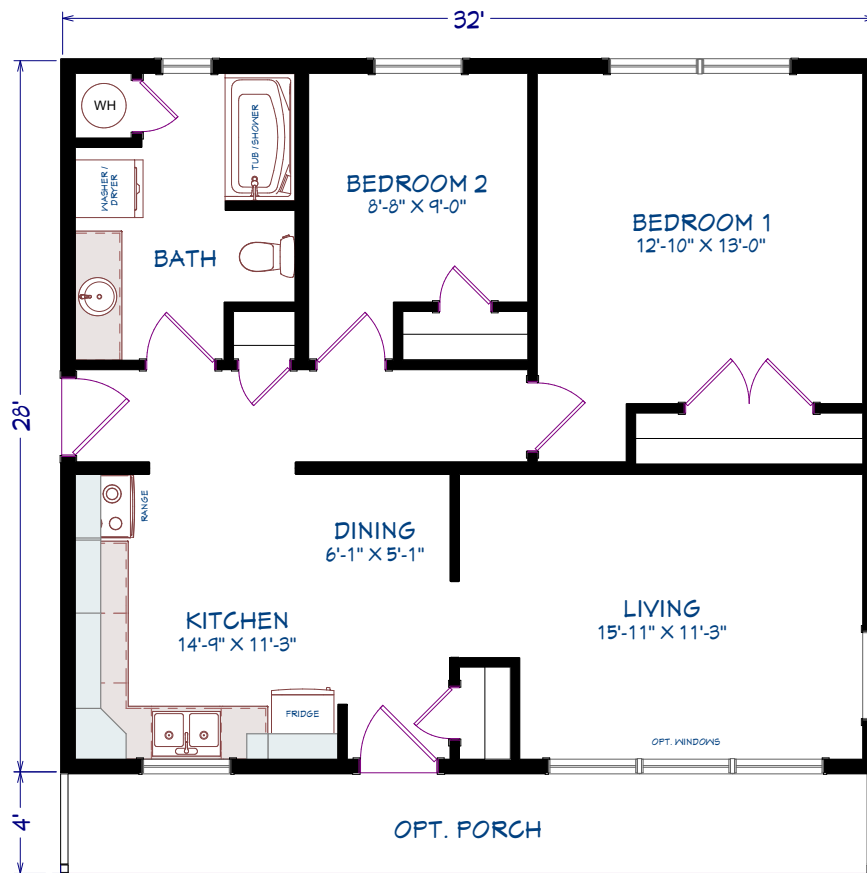
ML407
COTTAGE



896 SQUARE FEET
32' x 28' DIMENSIONS
2 BEDROOMS
1 BATHROOM

OPTIONS

Porch, railings and deck
Mulled living room window
Front door, painted, full glass
Appliances



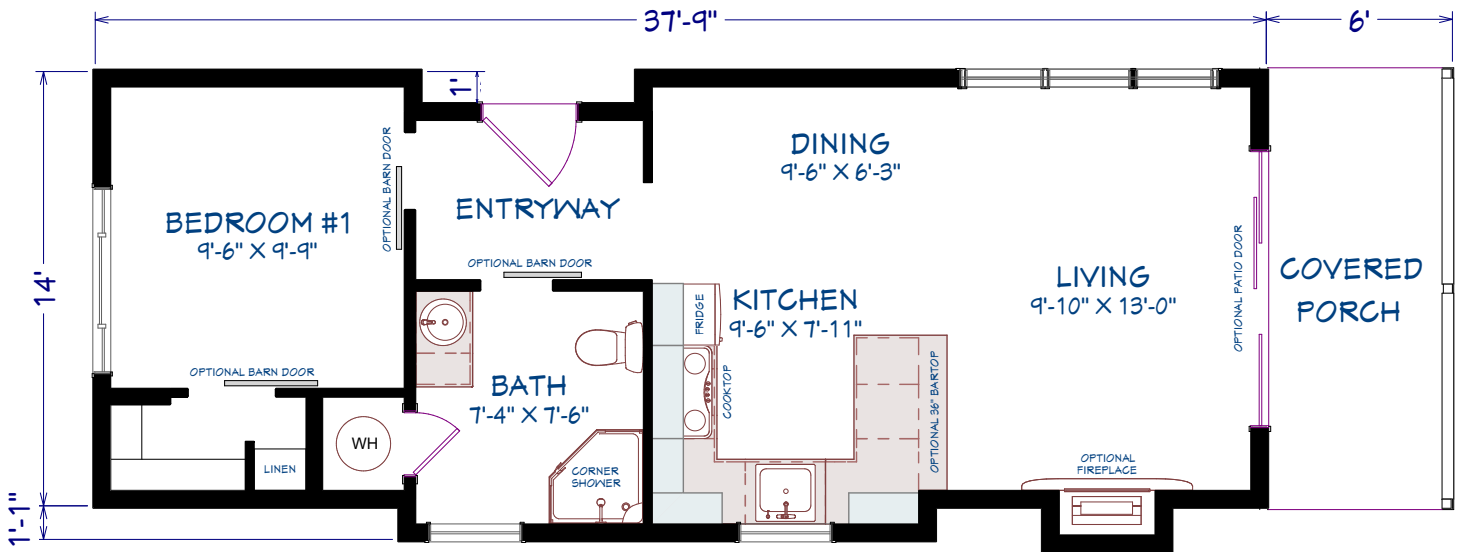
2 BEDROOMS, 1 BATHROOM
896 SQ FT

CABINE
COTTAGE



545 SQUARE FEET
37' x 14/15' DIMENSIONS
1 BEDROOM
1 BATHROOM

- OPTIONS**
- Exterior finish
 - Coloured siding accessories
 - Window and door colour
 - Exterior lighting
 - Interior barn doors
 - Appliances and fire place
 - Optional railing



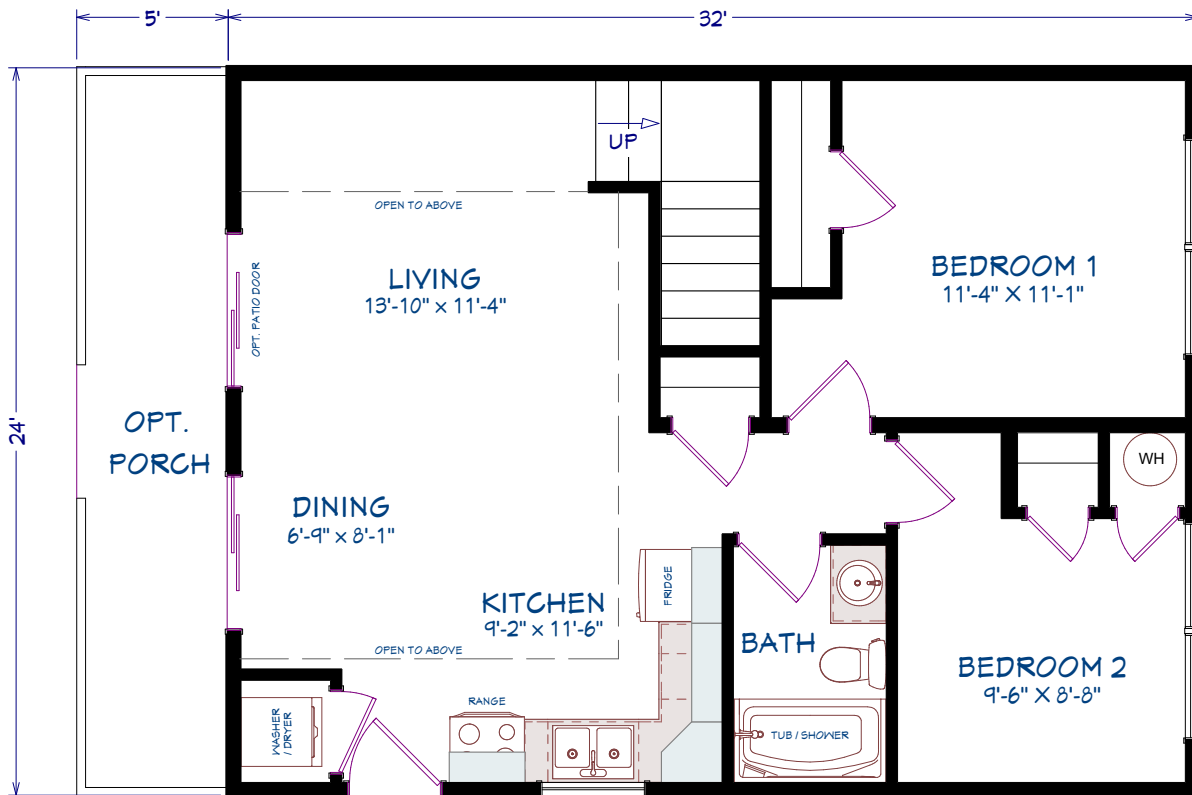
1 BEDROOM, 1 BATHROOM
545 SQ FT

ML309
CHALET



768 SQUARE FEET
32' x 24' DIMENSIONS
2 BEDROOMS
1 BATHROOM

- OPTIONS**
- Porch and railing
 - Patio doors
 - No window grills
 - Side door 3/4 glass
 - Trapezoid windows
 - Appliances



2 BEDROOMS, 1 BATHROOM
768 SQ FT

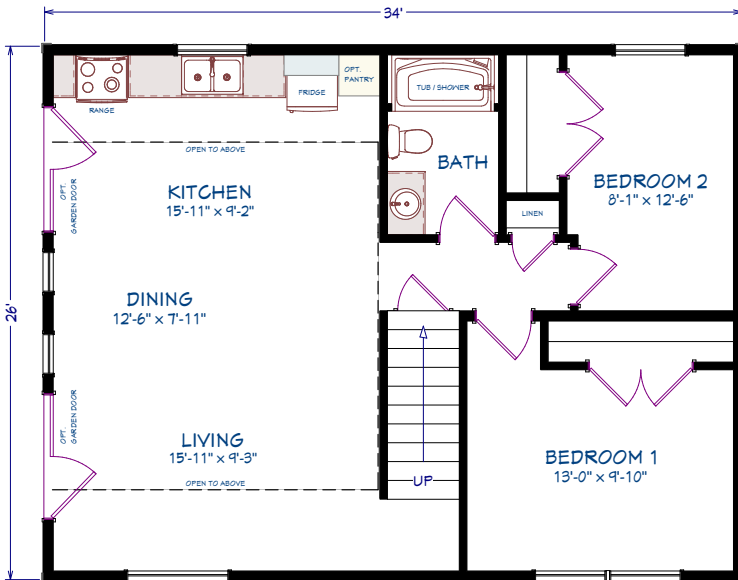
ML310
CHALET



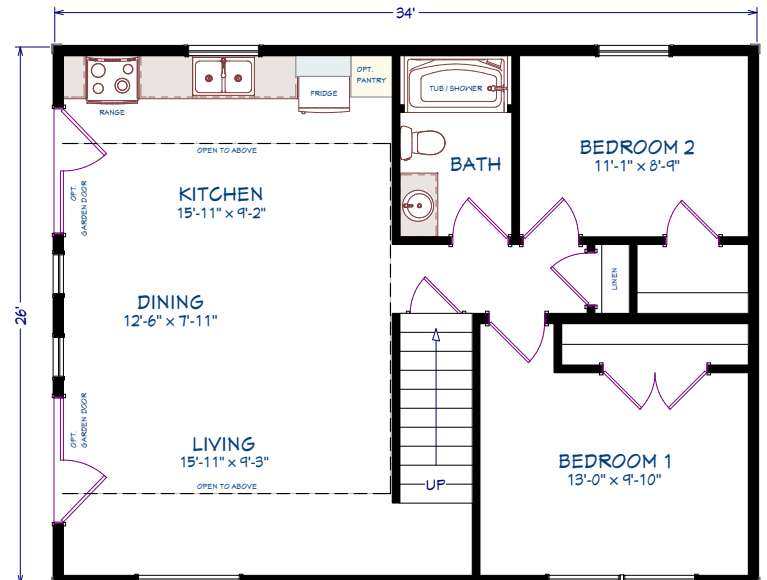
884 SQUARE FEET
34' x 26' DIMENSIONS
2 BEDROOMS
1 BATHROOM

OPTIONS

- Custom second floor windows
- Patio doors
- Queen Anne window grills
- Appliances



2 BEDROOMS, 1 BATHROOM
884 SQ FT



2 BEDROOMS, 1 BATHROOM
884 SQ FT

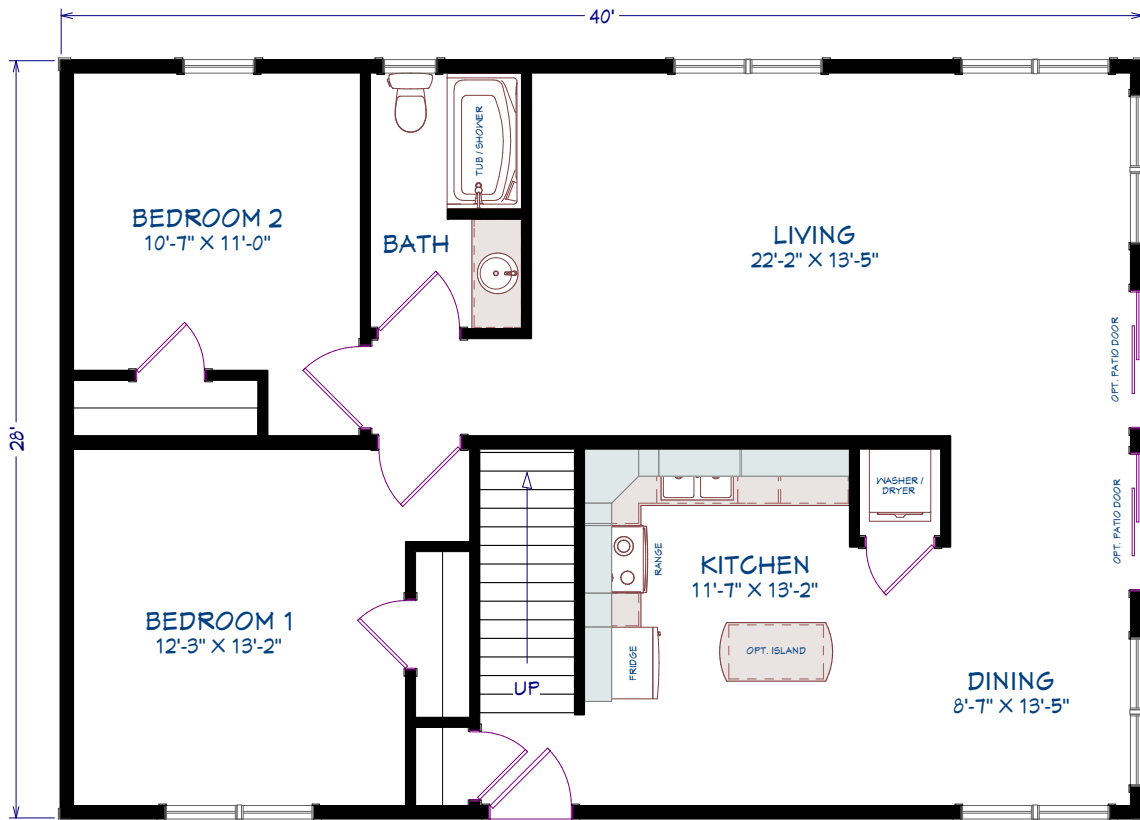
ML311
CHALET



1,120 SQUARE FEET
40' x 28' DIMENSIONS
2 BEDROOMS
1 BATHROOM

OPTIONS

- First and second floor porch with railing and roof above
- First and second floor patio doors
- Upper window grills
- 3 1/2" Window trim
- Second dining room window
- Appliances



2 BEDROOMS, 1 BATHROOM
1120 SQ FT



WELCOME HOME

All Maple Leaf Home interiors are designed to your exact specifications. Built the way you want it, from flooring to appliances.

MAPLE LEAF  HOMES

MAPLE LEAF HOMES

You have the option of choosing from our large selection of some of the best designs in the industry or, if you have your own plans, we can work with you to build your home, your way.

Once you choose the floor plan you like, you get to pick your options. There are hundreds of options to choose from, everything from the colour of your siding to the hardware on your kitchen cabinets. We will build your home, your way.

To start designing your new home, visit our website at www.mapleleafhomes.ca to find a retailer in your area.



MAPLE LEAF HOMES

655 Wilsey Road
Fredericton, NB
Canada, E3B 7K3

Tel: 506 459 1335
Email: hello@mlhomes.ca

NOTE Maple Leaf Homes reserve the right to make changes to this brochure without prior notice and without incurring any obligations to any previous, present or future customers as the result of any changes made.