

MAPLE LEAF HOMES



Mini
Homes

MAPLE LEAF HOMES

Every Maple Leaf Home is manufactured with high quality materials by experienced craftsmen. You can take comfort in knowing that your investment will be protected by some of the best warranties in the Industry.

- One year Maple Leaf Home manufacturer's warranty against defects in materials and workmanship.
- Limited lifetime warranty on roofing shingles provided by shingles manufacturer.
- Limited lifetime warranty on vinyl siding provided by siding manufacturer.
- Limited lifetime warranty on fixtures provided by fixtures manufacturer.
- Limited lifetime warranty available on windows by the window manufacturer.
- 10 year limited structural warranty available through Atlantic Home Warranty Corporation (available in Atlantic Canada).



WHY CHOOSE A MAPLE LEAF HOME?



- Locally owned and operated since 1985
- Award winning manufacturer for energy efficiency and customer satisfaction
- Industry leading manufacturer of energy efficient homes
- Energuide and Energy-Star certified builder
- Over 30 convenient locations to serve you better throughout Atlantic Canada, Quebec, Ontario and the New England States
- The most comprehensive warranties in the industry to protect your investment
- High quality custom cabinetry and interior finishes
- Efficiently manufactured indoors in a controlled environment
- In-plant quality control for every step of the manufacturing process ensures a top quality product that meets or exceeds the most up to date building codes
- Accurate scheduling – no weather delays
- No cost overruns – no waiting for sub contractors
- Environmentally friendly production – waste is reduced and recycling is maximized
- Plywood floor and wall construction
- Pre-engineered and individually custom built
- Premium building materials to assure top performance and service
- Professionally designed plans to ensure functionality for comfortable living
- Quality and innovations that are responsive to your living needs and wishes
- Custom designed plans

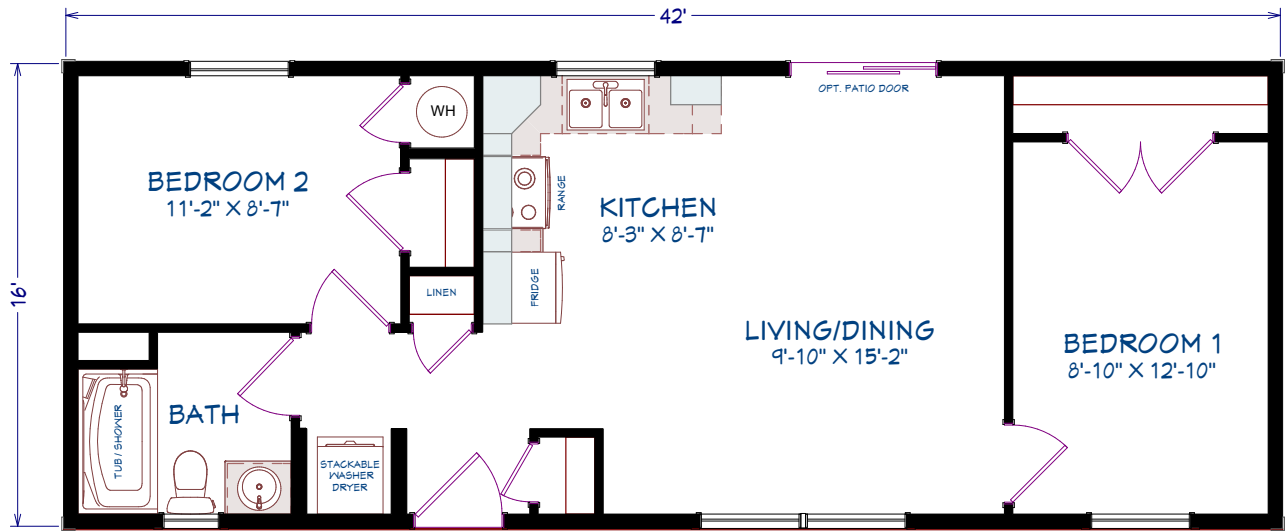
All Maple Leaf Homes include these standard features:

- Limited lifetime warranty on roof shingles
- Limited lifetime warranty on vinyl siding
- 30 year warranty on windows
- High quality designer cabinets
- Kiln dried lumber
- Quality plumbing fixtures
- Plywood floor and wall construction
- Painted wood interior trim (no MDF)
- Energy efficient

ML101
MINI HOME

672 SQUARE FEET
16' x 42' DIMENSIONS
2 BEDROOMS
1 BATHROOM

OPTIONS
Imperial dormer
Window pediment
Front door ¾ glass
Queen Anne window grills

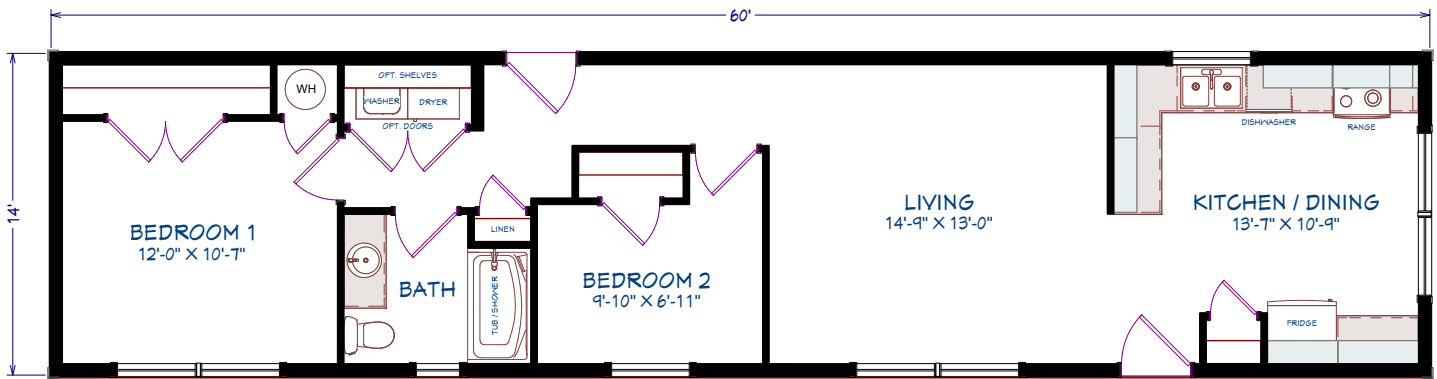
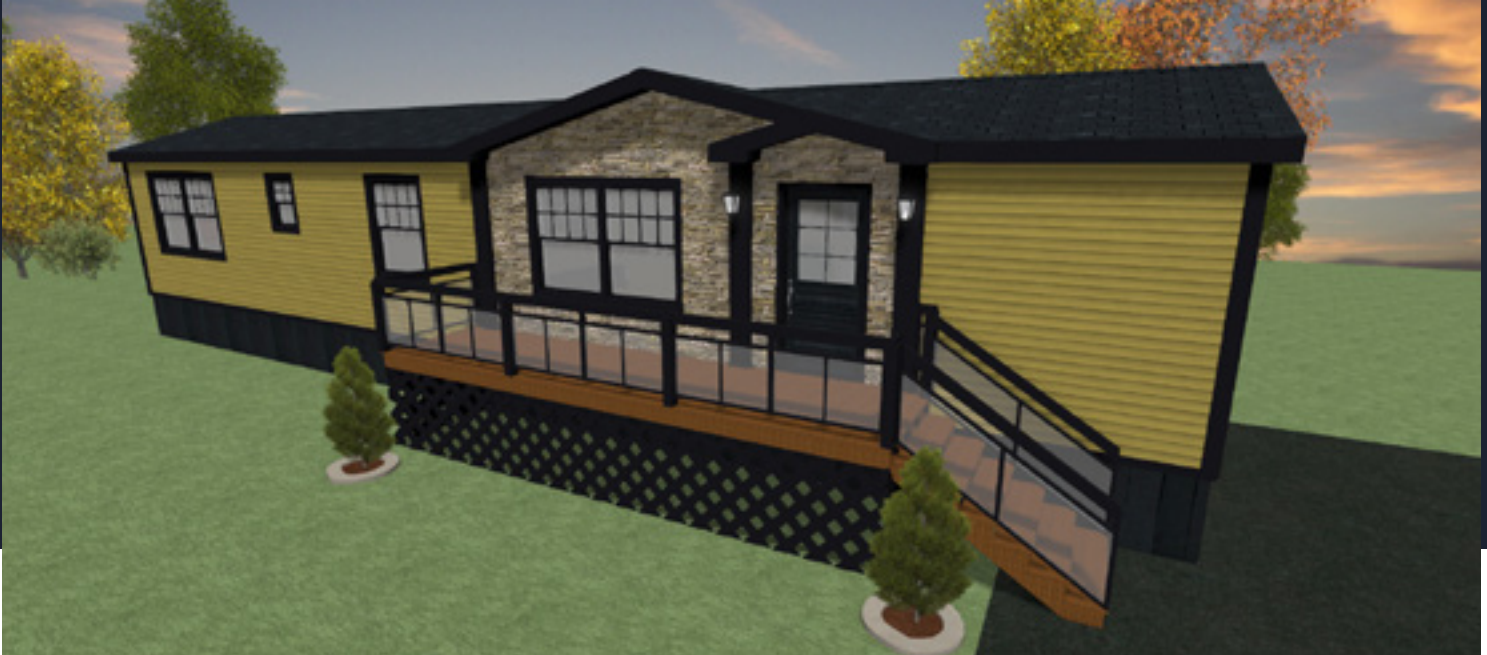


2 BEDROOM, 1 BATHROOM
672 SQ FT

ML102
MINI HOME

840 SQUARE FEET
14' x 60' DIMENSIONS
2 BEDROOMS
1 BATHROOM

OPTIONS
Condor 1 dormer
Stone vinyl siding
Window and door colour
Coloured siding accessories



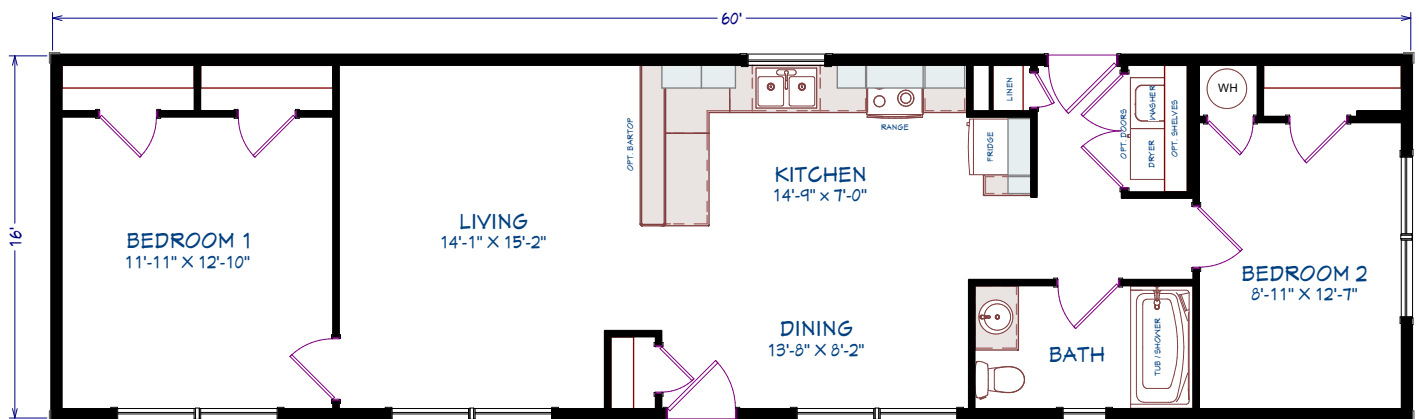
2 BEDROOMS, 1 BATHROOM
840 SQ FT

ML103 MINI HOME

960 SQUARE FEET
16' x 60' DIMENSIONS
2 BEDROOMS
1 BATHROOM

OPTIONS
Condor 1 dormer
Stone vinyl siding
3 1/2" Window trim
Coloured siding accessories

Window and door colour
Upper window grills
Front door glass
Appliances



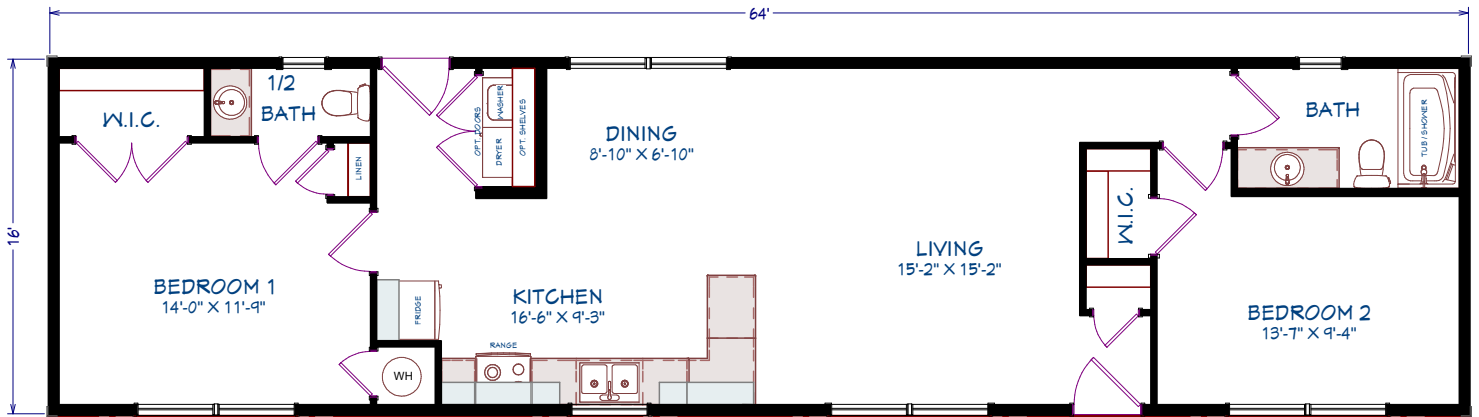
2 BEDROOMS, 1 BATHROOM
960 SQ. FT.

ML104 MINI HOME

1,024 SQUARE FEET
16' x 64' DIMENSIONS
2 BEDROOMS
1.5 BATHROOMS

OPTIONS
Contemporary dormer
Hip roof
Front door ¾ glass
Upper window grills

Raised panel shutters
Appliances



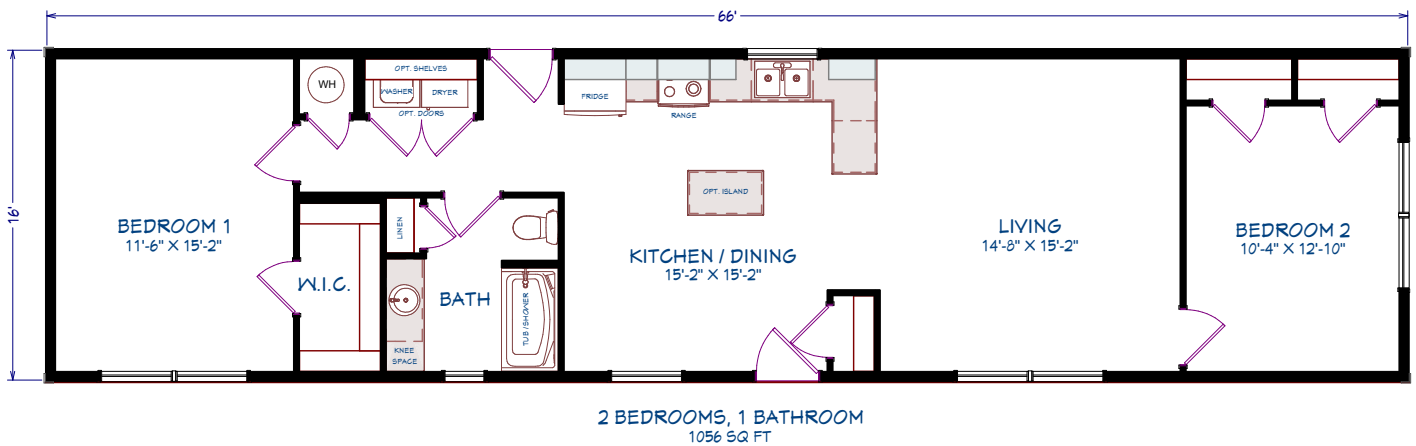
2 BEDROOMS, 1.5 BATHROOMS
1024 SQ FT

ML105 MINI HOME

1,056 SQUARE FEET
16' x 66' DIMENSIONS
2 BEDROOMS
1 BATHROOM

OPTIONS
Condor 1 dormer
Window pediment
Front door ¾ glass
Upper window grills

Window and door trim
colour
Appliances

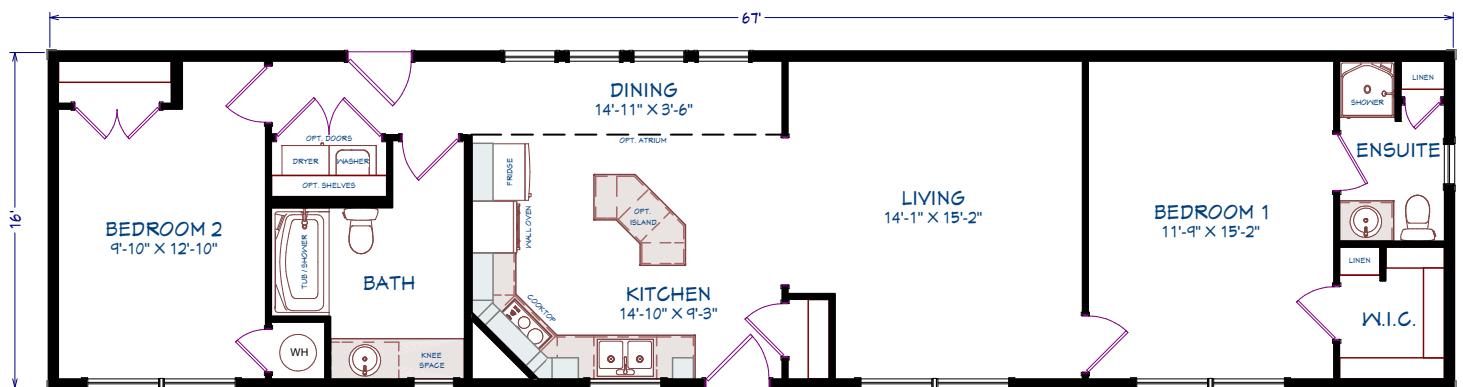


ML106
MINI HOME

1,072 SQUARE FEET
16' x 67' DIMENSIONS
2 BEDROOMS
2 BATHROOMS

OPTIONS
Small dormer
Atrium
Front door 3/4 glass
Upper Queen Anne window
grills

5 1/2" Window and door trim
Appliances

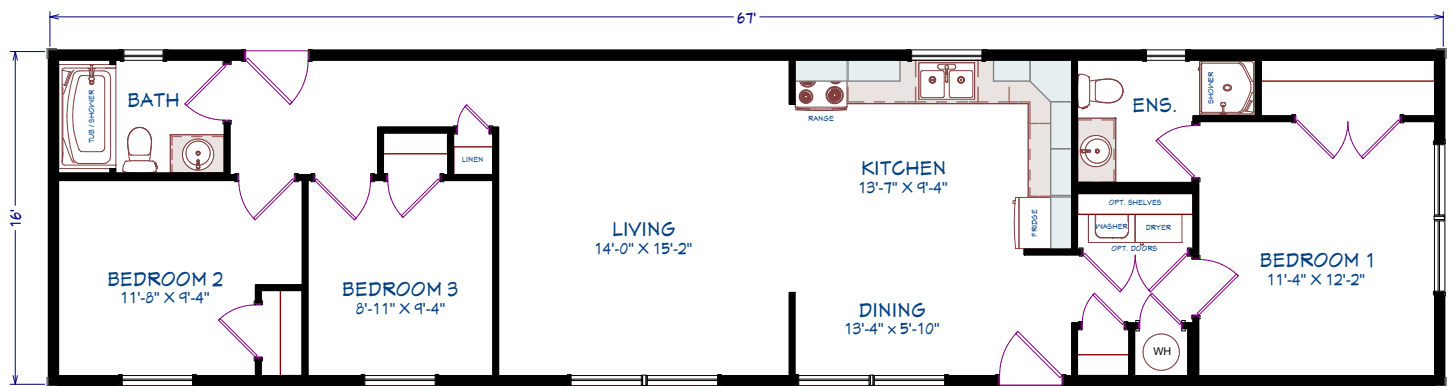


2 BEDROOMS, 2 BATHROOMS
1072 SQ. FT.

ML107
MINI HOME

1,072 SQUARE FEET
16' x 67' DIMENSIONS
3 BEDROOMS
2 BATHROOMS

OPTIONS
Imperial plus dormer
Craftsman window grills
Front door ¾ glass
Appliances

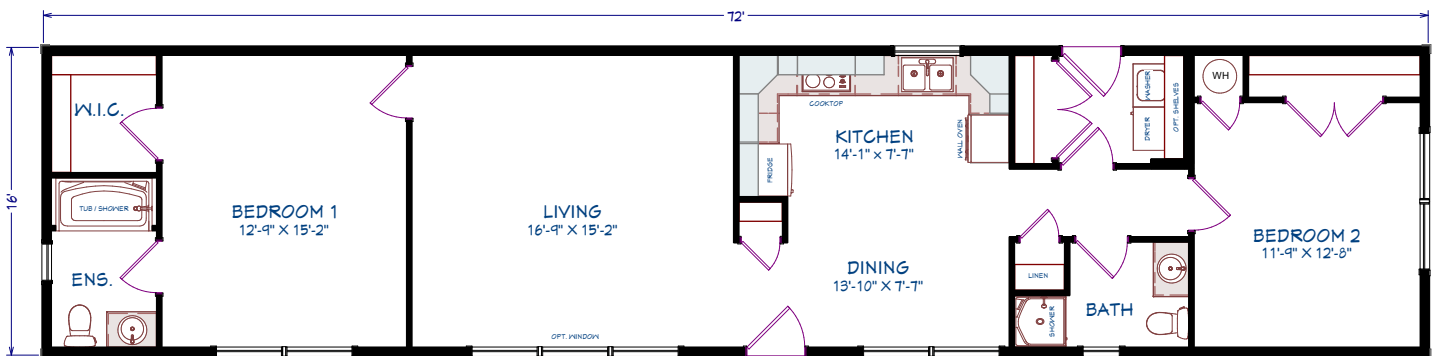


3 BEDROOMS, 2 BATHROOMS
1072 SQ FT

ML108
MINI HOME

1,152 SQUARE FEET
16' x 72' DIMENSIONS
2 BEDROOMS
2 BATHROOMS

OPTIONS
Condor 2 dormers
Front door full glass
No window grills
3 1/2" Window trim



2 BEDROOMS, 2 BATHROOMS
1152 SQ FT

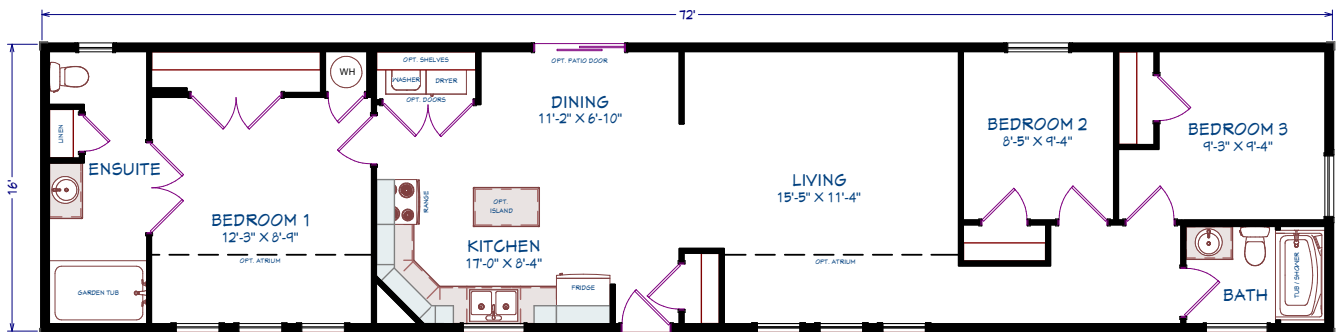
ML109 MINI HOME

1,152 SQUARE FEET
16' x 72' DIMENSIONS
3 BEDROOMS
2 BATHROOMS

OPTIONS
Atriums
Large dormer
Dustpan roof
Stone vinyl siding

Front door ¾ glass
Patio door
No window grills
Window and door colour

Coloured siding accessories
3 ½" Window trim
Appliances



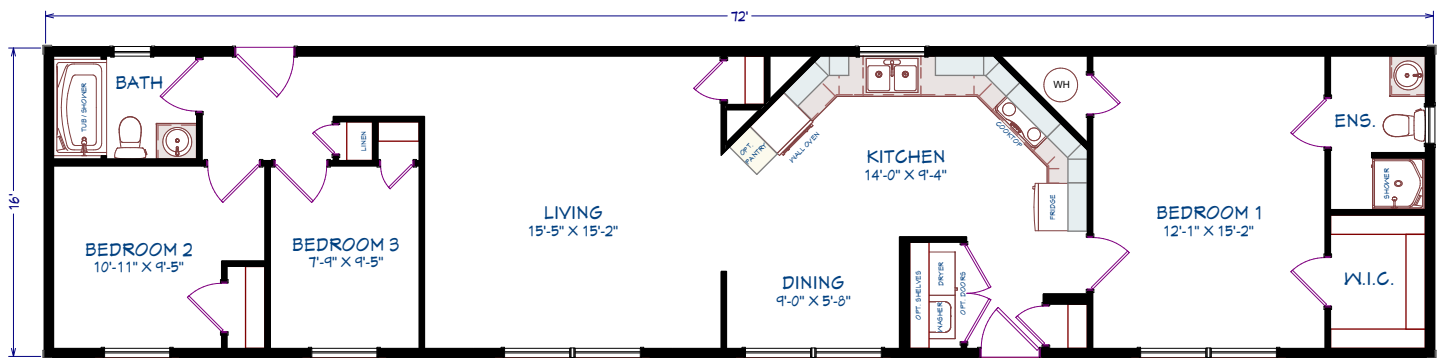
3 BEDROOMS, 2 BATHROOMS
1152 SQ FT

ML110 MINI HOME

1,152 SQUARE FEET
16' x 72' DIMENSIONS
3 BEDROOMS
2 BATHROOMS

OPTIONS
Colonial dormer
Small dormer
Stone vinyl siding
Upper window grills
Upper window grills

Window and door colour
Coloured siding accessories
5 1/2" Window trim
Appliance



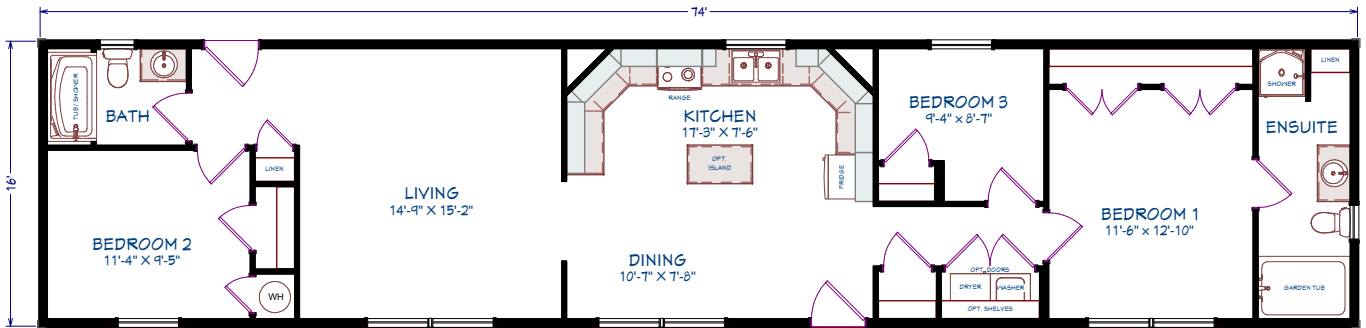
ML111
MINI HOME

1,184 SQUARE FEET
16' x 74' DIMENSIONS
3 BEDROOMS
2 BATHROOMS

OPTIONS

Condor 1 dormer
Queen Anne window grills
Front door ¾ glass
Coloured siding accessories

Window and door trim colour
5 ½" Window trim
Appliances



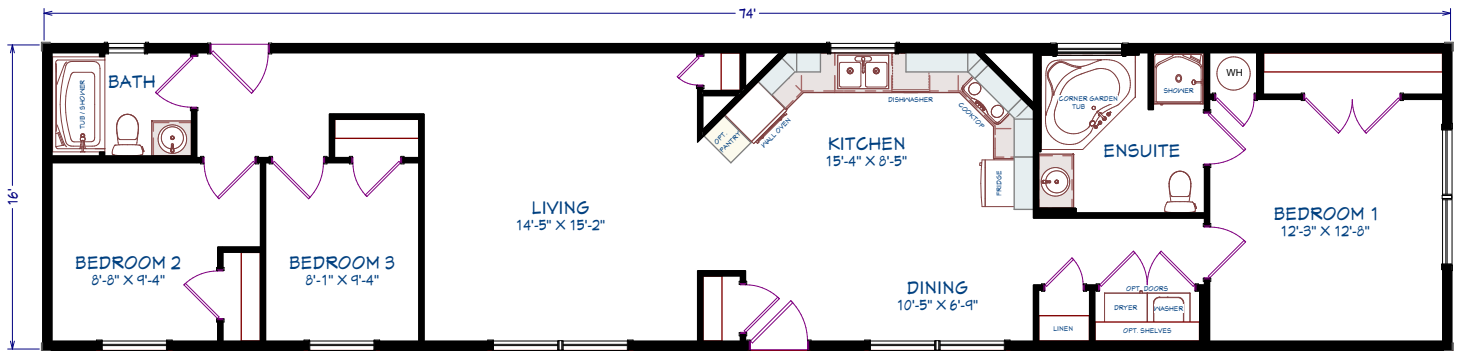
3 BEDROOMS, 2 BATHROOMS
1184 SQ FT

ML112
MINI HOME

1,184 SQUARE FEET
16' x 74' DIMENSIONS
3 BEDROOMS
2 BATHROOMS

OPTIONS
Condor 2 dormers
Front door full glass
Upper window grills

Window and door colour
Appliances

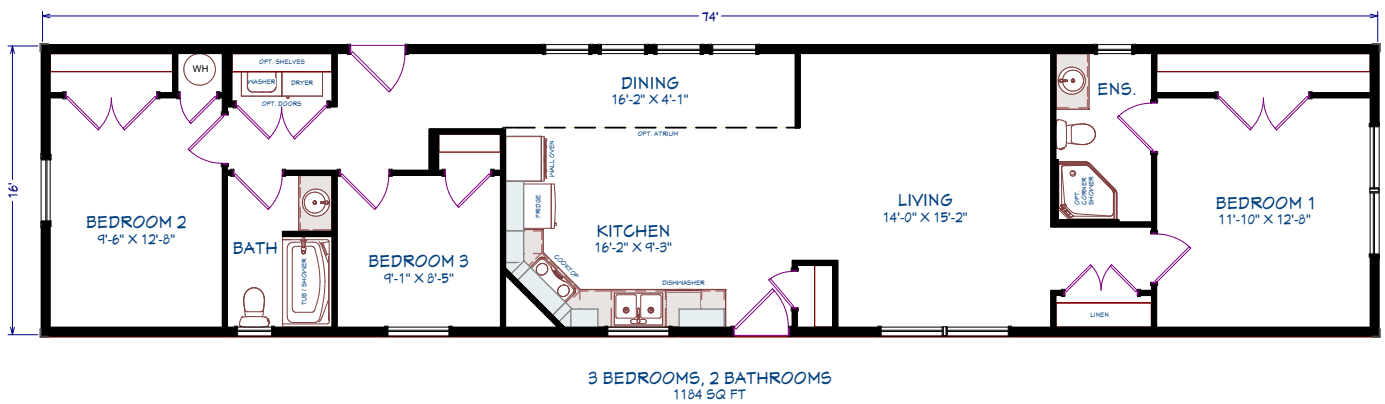


3 BEDROOMS, 2 BATHROOMS
1184 SQ. FT.

ML113
MINI HOME

1,184 SQUARE FEET
16' x 74' DIMENSIONS
3 BEDROOMS
2 BATHROOMS

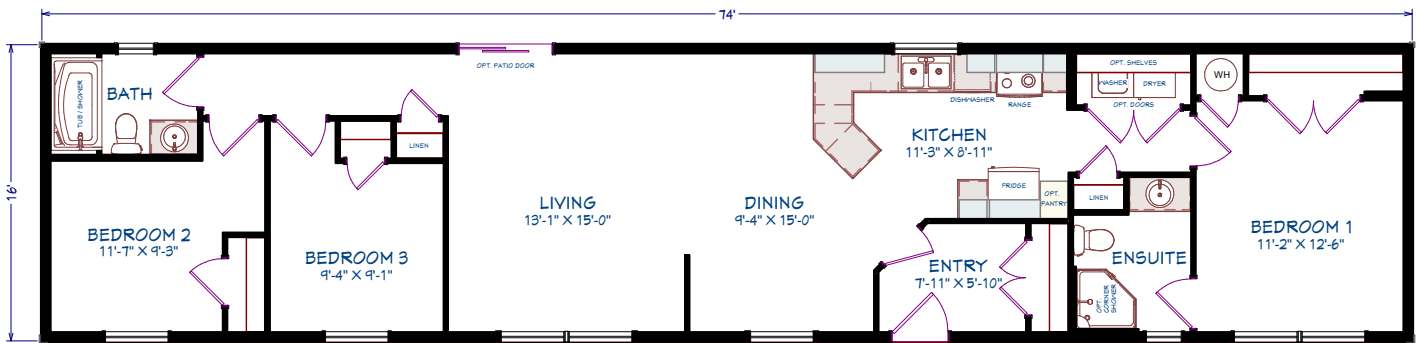
OPTIONS
Atrium
Condor 1 dormer
Front door no grills
3 1/2" Window trim



ML114
MINI HOME

1,184 SQUARE FEET
16' x 74' DIMENSIONS
3 BEDROOMS
2 BATHROOMS

OPTIONS
Condor 1 dormer
Shake vinyl siding
Upper window grills
Front door 1/2 moon



3 BEDROOMS, 2 BATHROOMS
1184 SQ FT

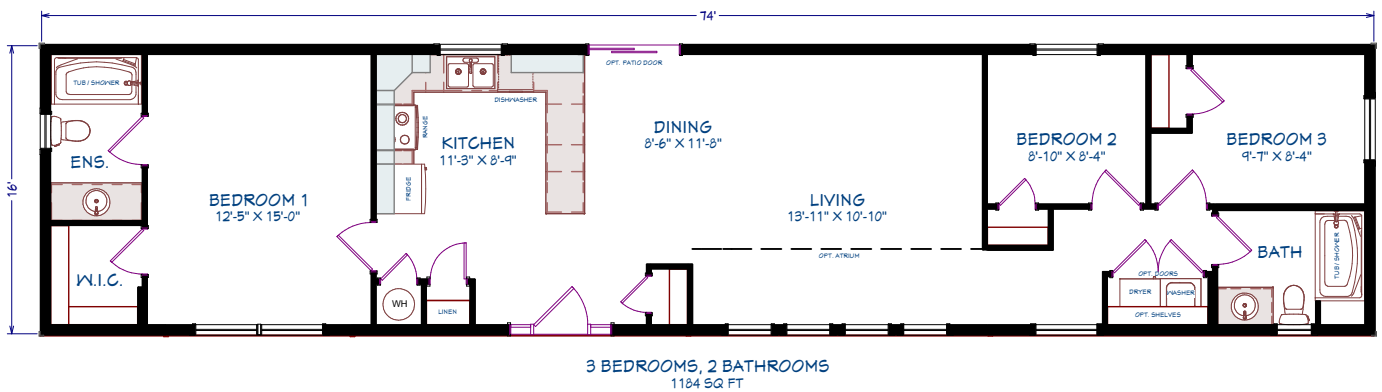
ML115 MINI HOME

1,184 SQUARE FEET
16' x 74' DIMENSIONS
3 BEDROOMS
2 BATHROOMS

OPTIONS
Atrium
Large dormer
Small dormer
Dustpan roof

Queen Anne window grills
Full glass front door and sidelights

Shake vinyl siding
Patio door
3 1/2" Window trim
Appliances

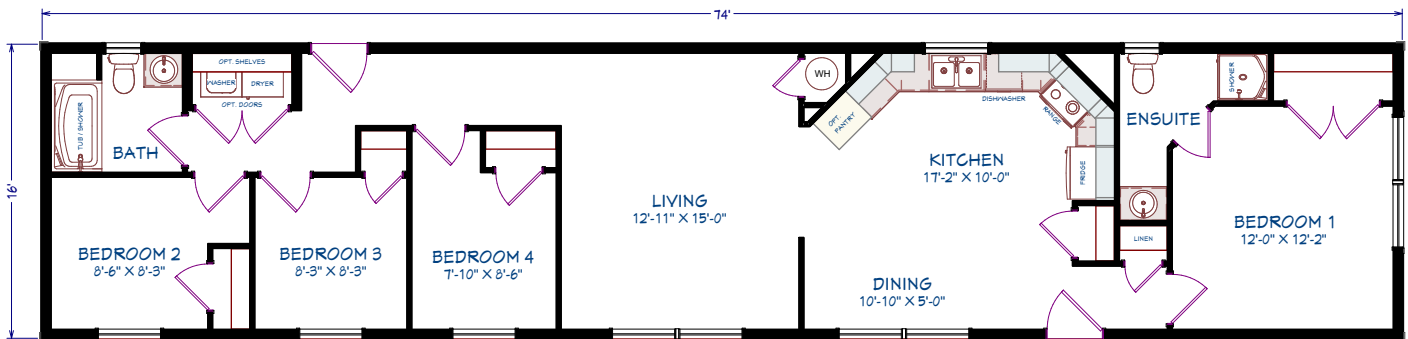


ML116
MINI HOME

1,184 SQUARE FEET
16' x 74' DIMENSIONS
4 BEDROOMS
2 BATHROOMS

OPTIONS
Condor 1 dormers
Front door 3/4 glass
Raised panel shutters

Extra coach light
Appliances

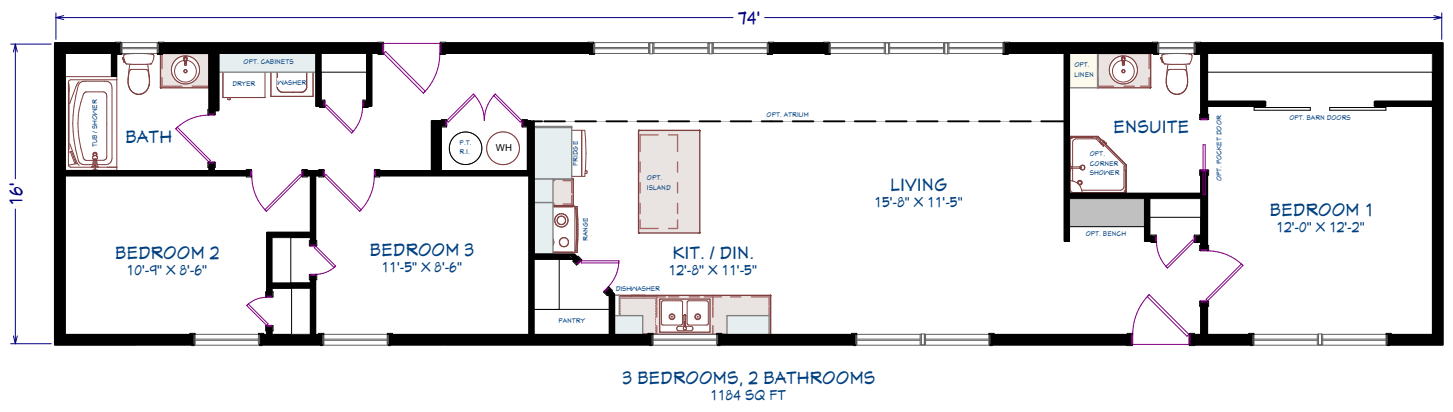


4 BEDROOMS, 2 BATHROOMS
1184 SQ FT

ML117
MINI HOME

1,184 SQUARE FEET
16' x 74' DIMENSIONS
3 BEDROOMS
2 BATHROOMS

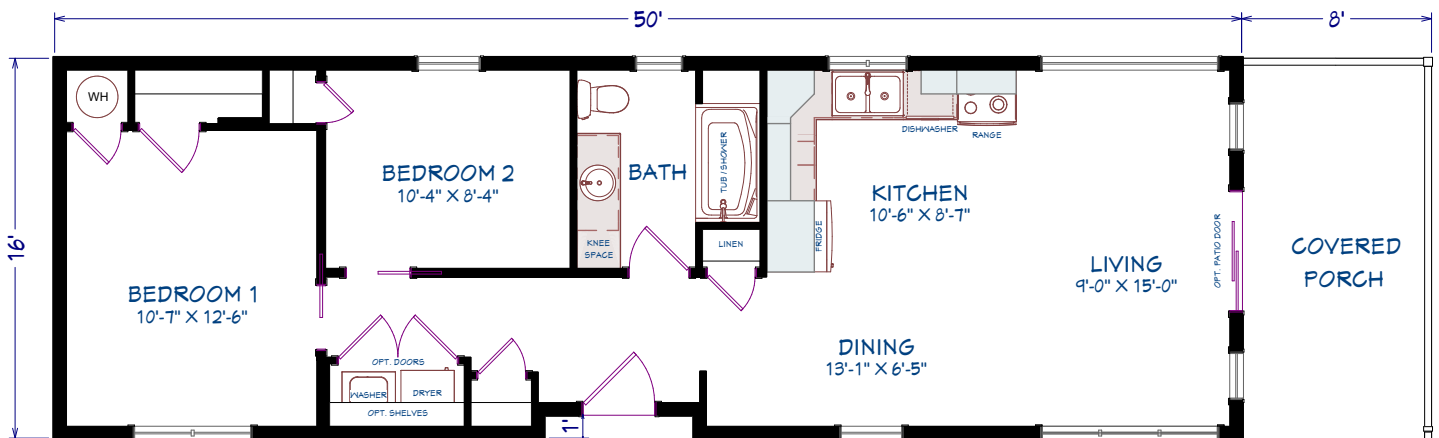
OPTIONS
Canadana exterior
Colonial entrance
Front door, painted,
full glass
Stone vinyl siding



CABINE
MINI HOME

794 SQUARE FEET
16' x 50' DIMENSIONS
2 BEDROOMS
1 BATHROOM

OPTIONS
Recessed entry
Stone vinyl siding
Vertical vinyl siding
Covered porch with glass railing

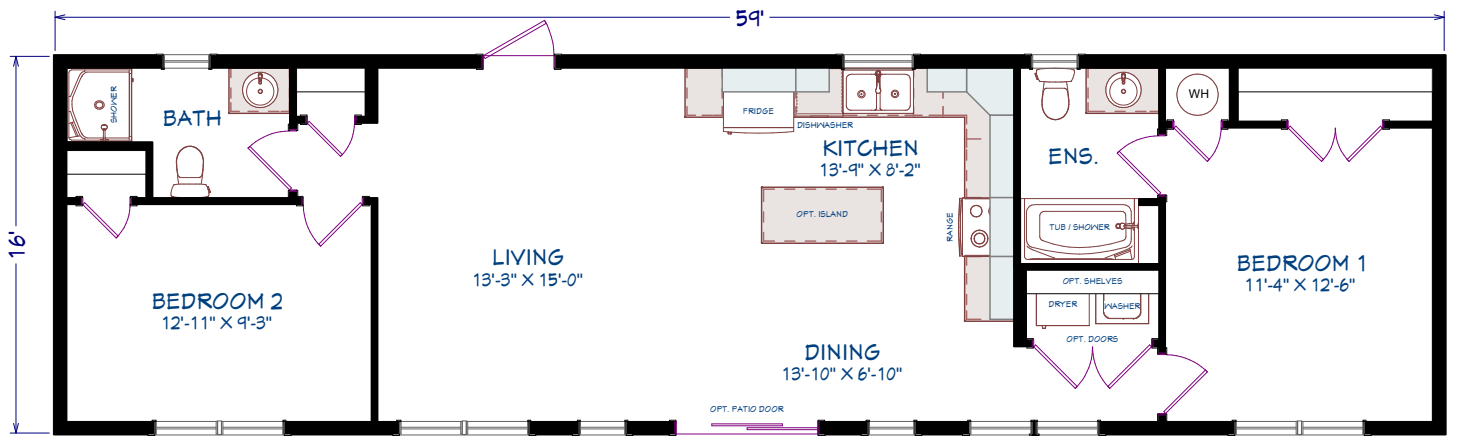


2 BEDROOMS, 1 BATHROOM
794 SQ FT

ML119
MINI HOME

944 SQUARE FEET
16' x 59' DIMENSIONS
2 BEDROOMS
2 BATHROOMS

OPTIONS
Shed style roof
Transom windows
Extra coach light
Vertical vinyl siding
3 1/2" Window trim



2 BEDROOMS, 2 BATHROOMS
944 SQ FT



WELCOME HOME

All Maple Leaf Home interiors are designed to your exact specifications. Built the way you want it, from flooring to appliances.

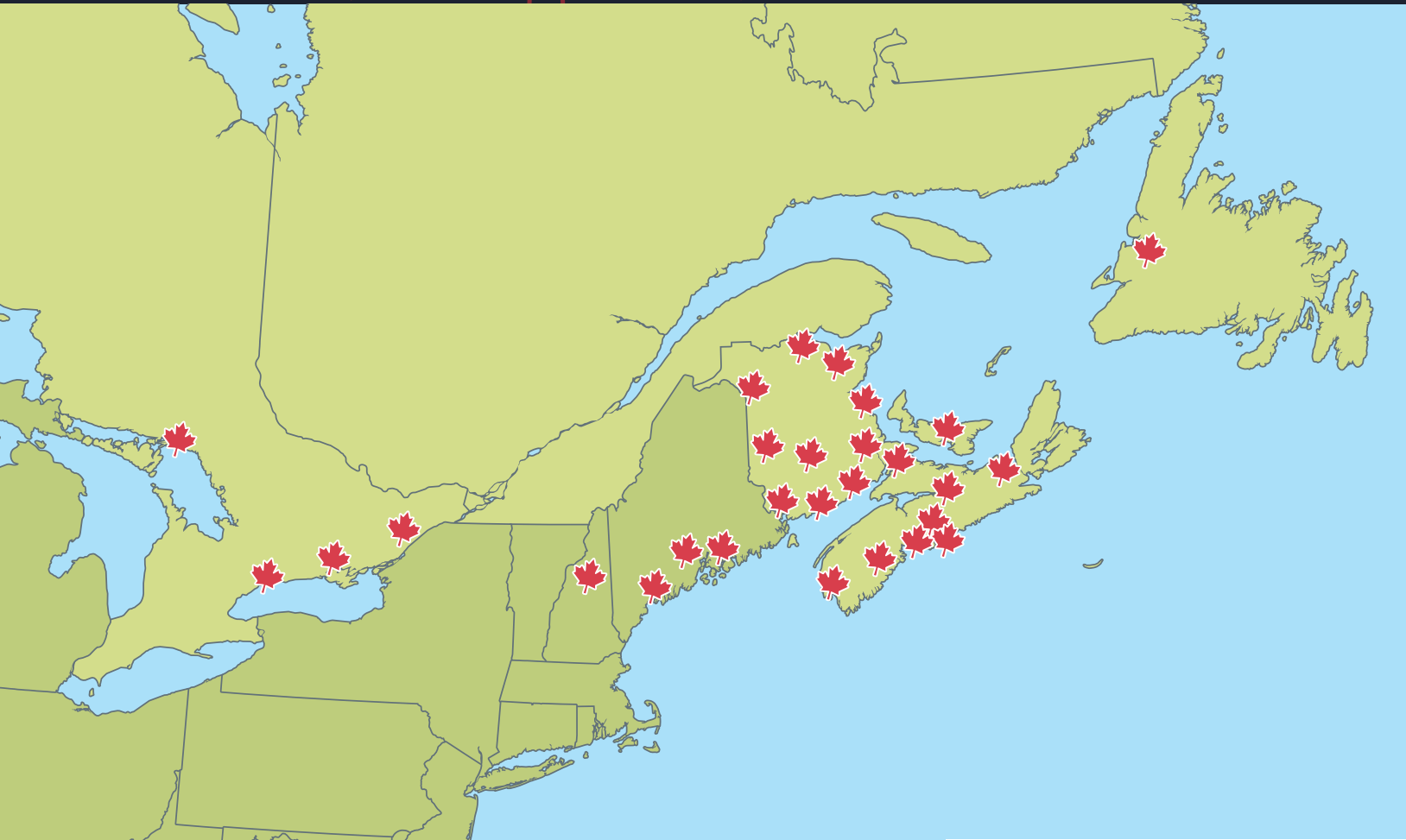
MAPLE LEAF  HOMES

MAPLE LEAF HOMES

You have the option of choosing from our large selection of some of the best designs in the industry or, if you have your own plans, we can work with you to build your home, your way.

Once you choose the floor plan you like, you get to pick your options. There are hundreds of options to choose from, everything from the colour of your siding to the hardware on your kitchen cabinets. We will build your home, your way.

To start designing your new home, visit our website at www.mapleleafhomes.ca to find a retailer in your area.



MAPLE LEAF HOMES

655 Wilsey Road
Fredericton, NB
Canada, E3B 7K3

Tel 506 459 1335
Email hello@mlhomes.ca

NOTE: Maple Leaf Homes reserves the right to make changes to this brochure without prior notice and without incurring any obligations to any previous, present or future customers as the result of any changes made.

RETAILER: