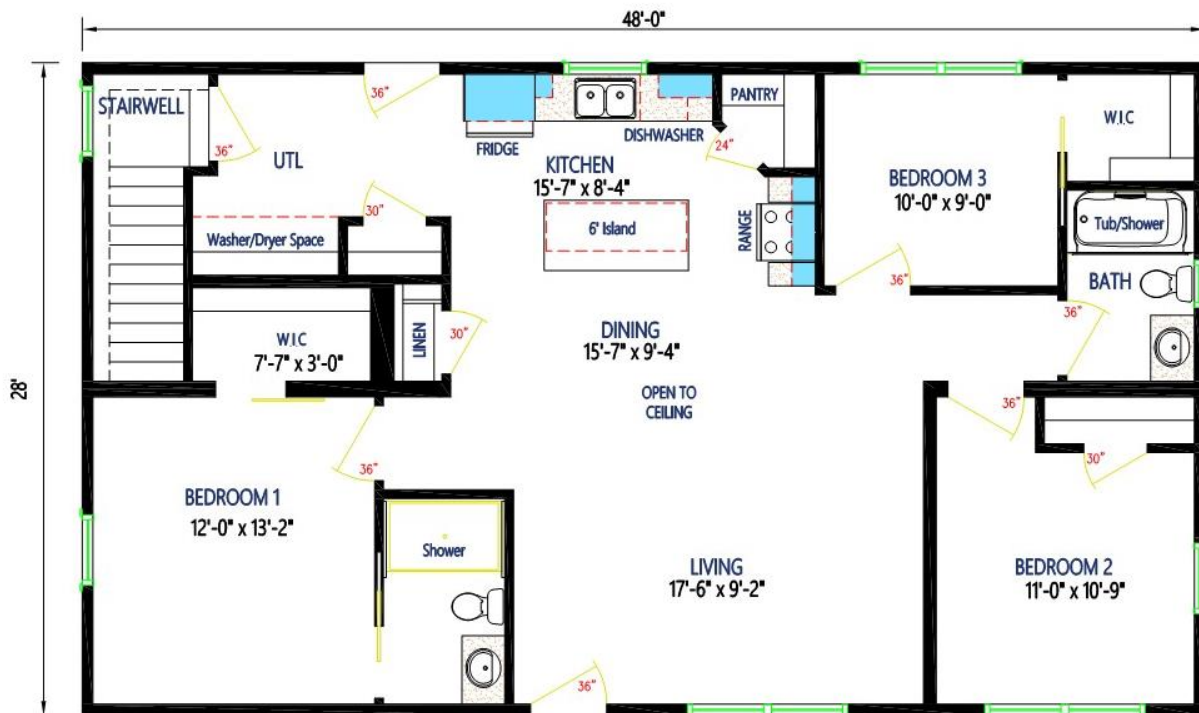




Maritime  
Homes Ltd.

10 Nova Scotia Trunk 10  
Cookville NS B4V 7P2  
tel 902 527 2510  
www.maritime-homes.ca

## 48ft x 28ft Modular Home



BUILT BY

MAPLE LEAF  HOMES

## 48ft x 28ft Modular Home

### HOME SPECIFICATIONS

This luxury 3 bedroom, 2 bathroom home has an open concept floor plan with a large living room and kitchen. This house also offers many comforts including a large island, upgraded bathrooms, and luxury exterior upgrades.

#### Exterior:

- ✓ R24 Wall Insulation / R31 Floor Insulation / R50 Roof Insulation
- ✓ Trim, Corners & Fascia – Black
- ✓ Upgraded Latch on Front Door
- ✓ Upgraded Door with 4 Panel Frosted Glass – Black
- ✓ Large Dormer on Front
- ✓ Novikshake on Front Peak – Winsor Blue
- ✓ 3 Transom Windows

#### Interior:

- ✓ Maple Onyx Cabinets in Kitchen & Bath
- ✓ Subway Tile Backsplash in Kitchen – Glossy White
- ✓ 72" Island with 36" Bar top
- ✓ Pull out Recycling Bin in Island
- ✓ 5' Dometop Tub
- ✓ Microwave Rangehood Combo
- ✓ 24" Deep Cabinet Above Fridge
- ✓ Fridge End Panel
- ✓ Subway Tile Backsplash in Shower – White
- ✓ Upgraded Shower Door
- ✓ Upgraded Shower Fixture
- ✓ 2 Coach Lights Front Door
- ✓ 9 LED 4" Potlights
- ✓ Heat Pump Disconnect
- ✓ 2 Pocket Doors
- ✓ Barn Door on Master Bedroom Closet – Black
- ✓ Upgraded Interior Doors
- ✓ Corner Pantry in Kitchen

BUILT BY

MAPLE LEAF  HOMES