

MAPLE LEAF HOMES



Modular Homes

Cape Cod
Chalet
Two Storey

MAPLE LEAF  HOMES

MAPLE LEAF HOMES

Every Maple Leaf Home is manufactured with high quality materials by experienced craftsmen. You can take comfort in knowing that your investment will be protected by some of the best warranties in the Industry.

- One year Maple Leaf Home manufacturer's warranty against defects in materials and workmanship.
- Limited lifetime warranty on roofing shingles provided by shingles manufacturer.
- Limited lifetime warranty on vinyl siding provided by siding manufacturer.
- Limited lifetime warranty on fixtures provided by fixtures manufacturer.
- Limited lifetime warranty available on windows by the window manufacturer.
- 10 year limited structural warranty available through Atlantic Home Warranty Corporation (available in Atlantic Canada).



WHY CHOOSE A MAPLE LEAF HOME?



- Locally owned and operated since 1985
- Award winning manufacturer for energy efficiency and customer satisfaction
- Industry leading manufacturer of energy efficient homes
- Energuide and Energy-Star certified builder
- Over 30 convenient locations to serve you better throughout Atlantic Canada, Quebec, Ontario and the New England States
- The most comprehensive warranties in the industry to protect your investment
- High quality custom cabinetry and interior finishes
- Efficiently manufactured indoors in a controlled environment
- In-plant quality control for every step of the manufacturing process ensures a top quality product that meets or exceeds the most up to date building codes
- Accurate scheduling – no weather delays
- No cost overruns – no waiting for sub contractors
- Environmentally friendly production – waste is reduced and recycling is maximized
- Plywood floor and wall construction
- Pre-engineered and individually custom built
- Premium building materials to assure top performance and service
- Professionally designed plans to ensure functionality for comfortable living
- Quality and innovations that are responsive to your living needs and wishes
- Custom designed plans

All Maple Leaf Homes include these standard features:

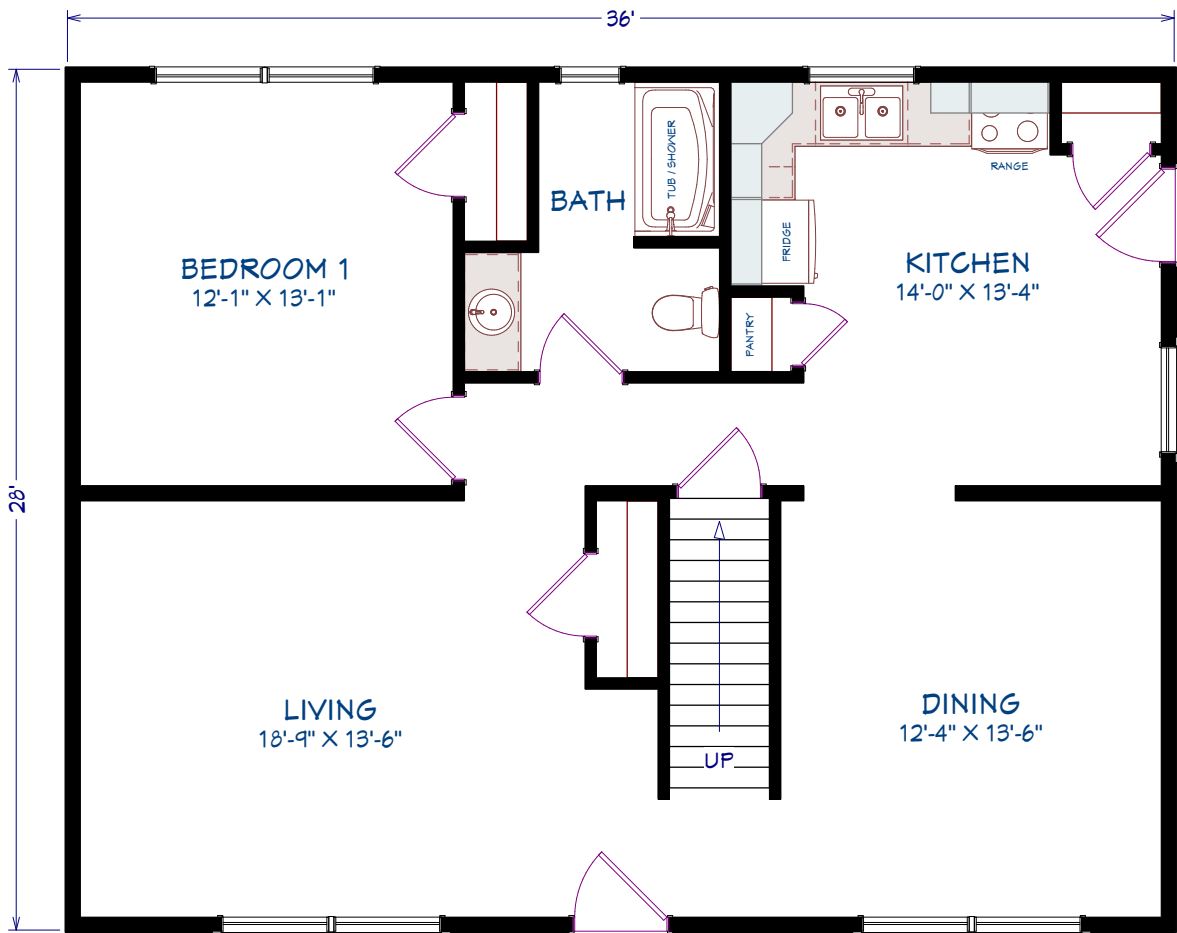
- Limited lifetime warranty on roof shingles
- Limited lifetime warranty on vinyl siding
- High quality designer cabinets
- 30 year warranty on windows
- Kiln dried lumber
- Quality plumbing fixtures
- Plywood floor and wall construction
- Painted wood interior trim (no MDF)
- Energy efficient

ML301
CAPE COD
2nd floor unfinished



1,008 SQUARE FEET
36' x 28' DIMENSIONS
1 BEDROOM
1 BATHROOM

- OPTIONS
- 5' Gable type dormers
 - Small dormer over door
 - Front door ¾ glass
 - Window and door colour
 - 3 ½" Window trim
 - Upper window grills
 - Appliances



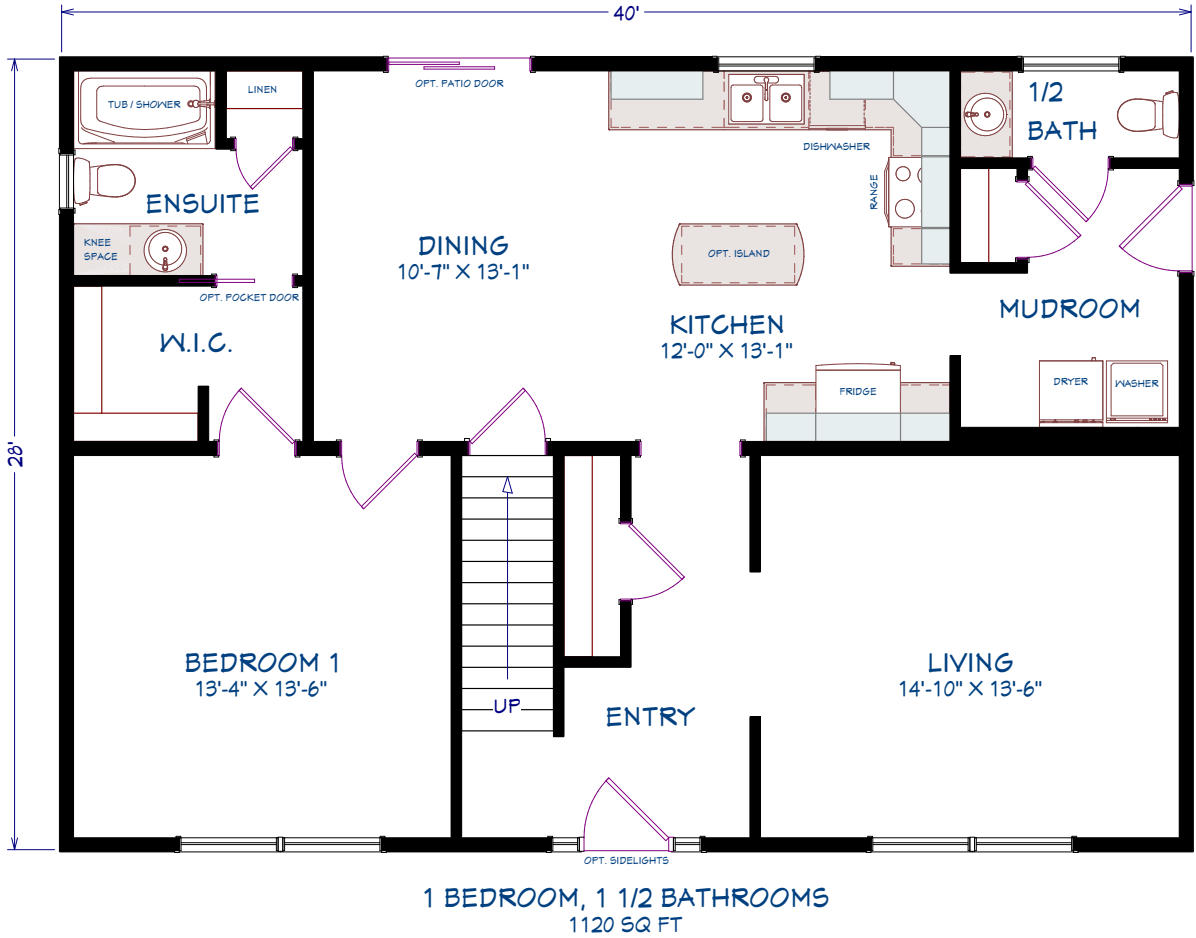
1 BEDROOM, 1 BATHROOM
1008 SQ FT

ML302
 CAPE COD
 2nd floor unfinished



1,120 SQUARE FEET
 40' x 28' DIMENSIONS
 1 BEDROOM
 1 1/2 BATHROOMS

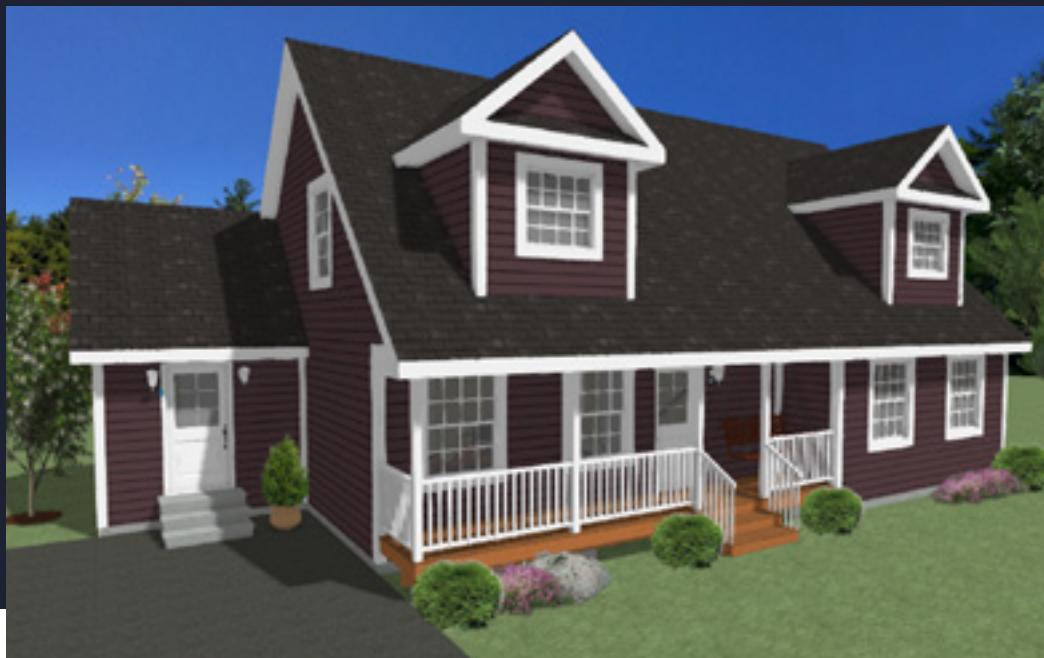
- OPTIONS
 8' Gable type dormer
 Small dormers above windows
 Front door glass and sidelights
 Second coach light
 Patio door
 Appliances



ML303

CAPE COD

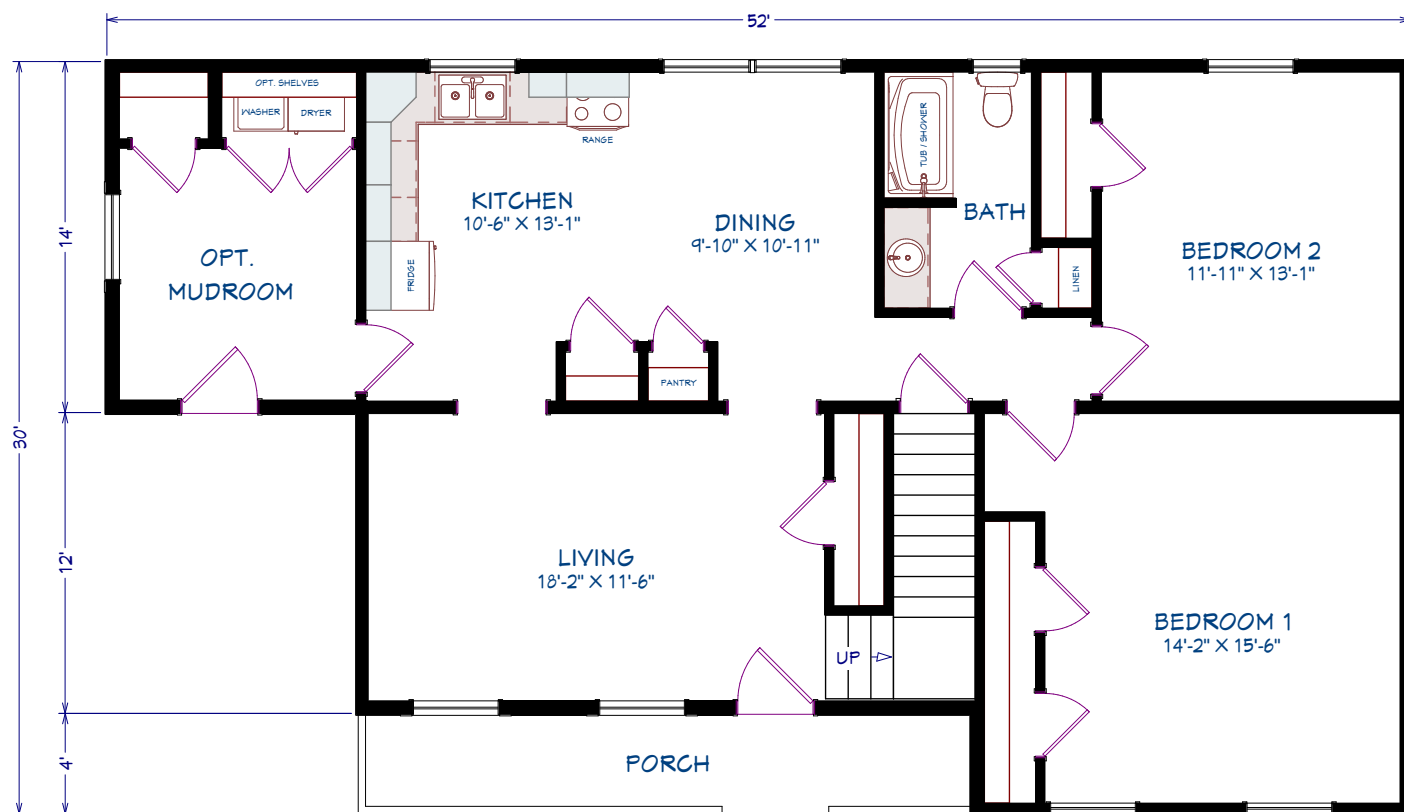
2nd floor unfinished



1,162 SQUARE FEET
42' x 30' 26" DIMENSIONS
2 BEDROOMS
1 BATHROOM

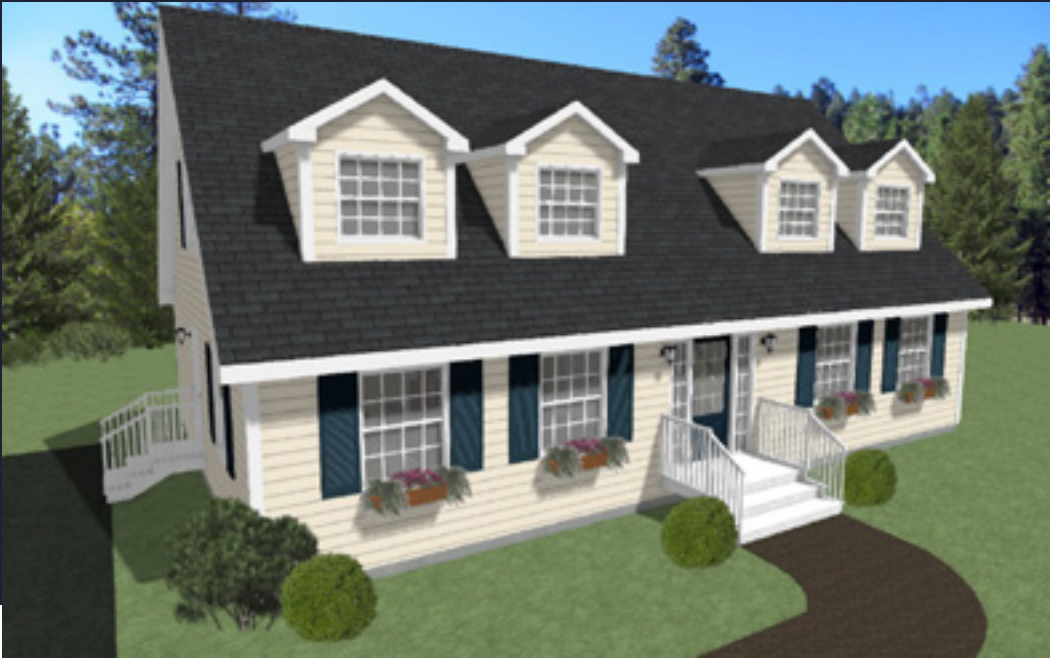
OPTIONS

7' gable type dormers
4' porch and railing
3 1/2" Window trim
Second coach light
Appliances



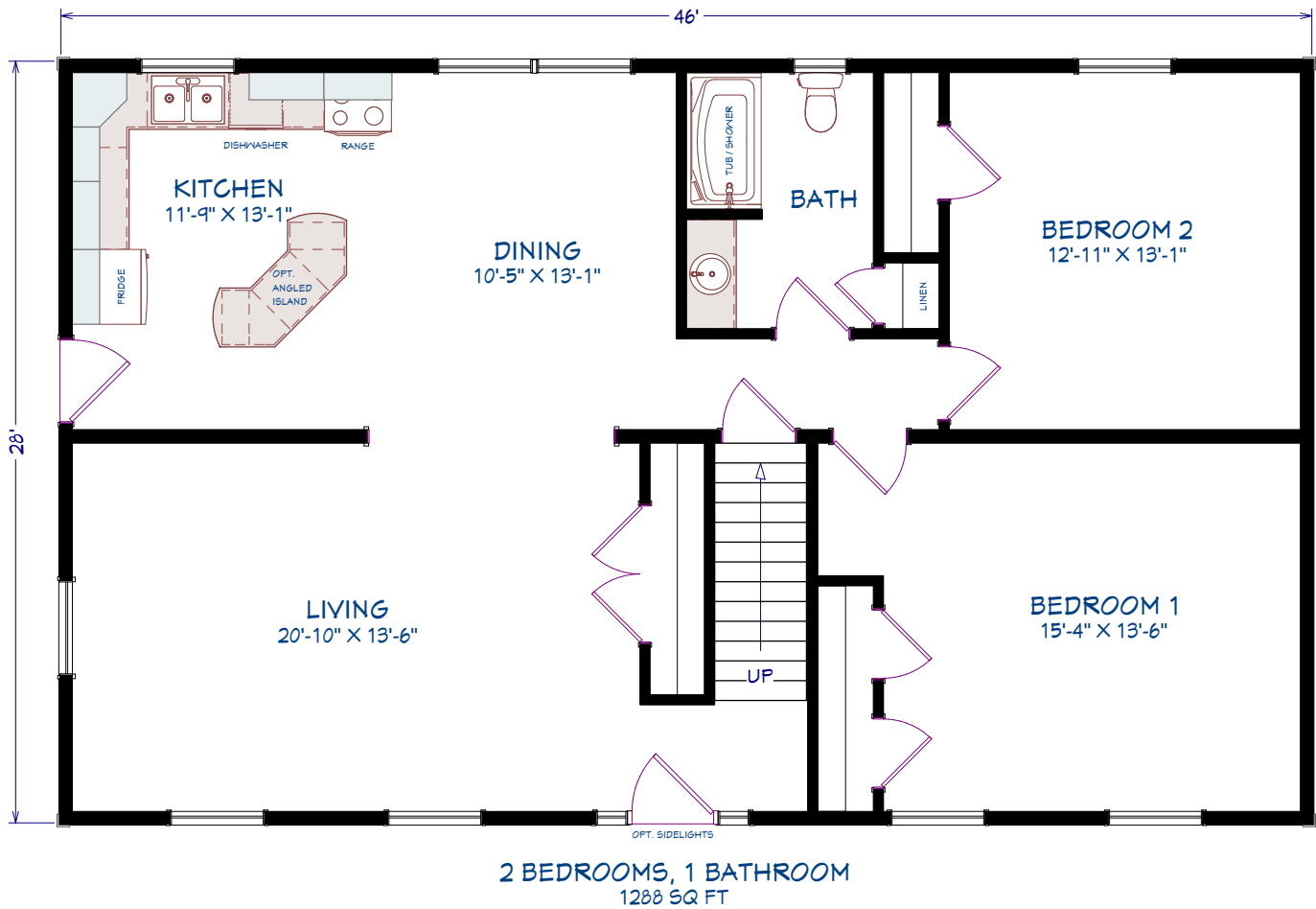
2 BEDROOMS, 1 BATHROOM
1162 SQ FT

ML304
CAPE COD
2nd floor unfinished



1,288 SQUARE FEET
46' x 28' DIMENSIONS
2 BEDROOMS
1 BATHROOM

OPTIONS
5' Gable type dormers
Front door ¾ glass and sidelights
Second coach light
Appliances

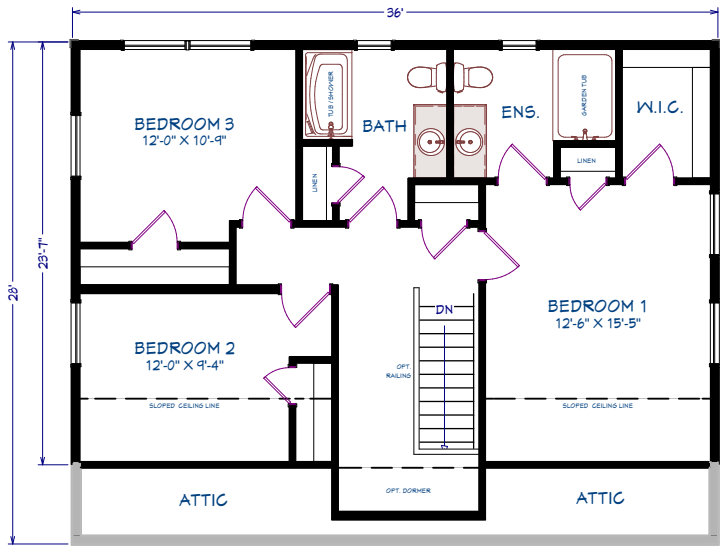


ML305
 CAPE COD
 2nd floor finished

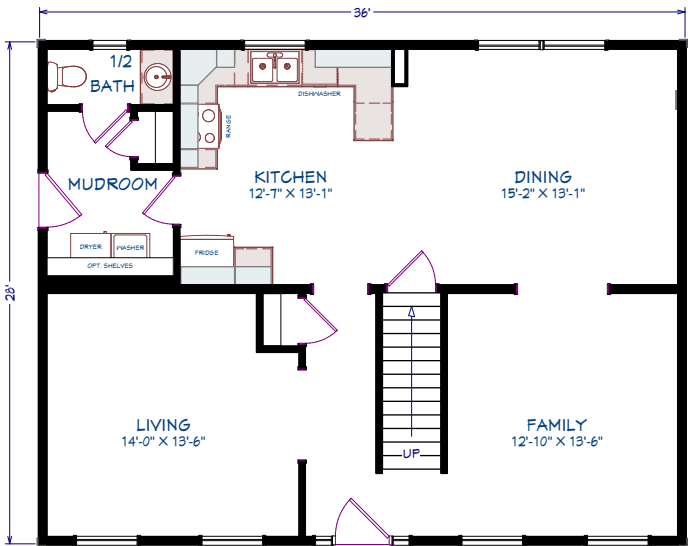


1,858 SQUARE FEET
 36' x 28' DIMENSIONS
 3 BEDROOMS
 2 1/2 BATHROOMS

OPTIONS
 8' Gable type dormer
 Front door glass and sidelights
 Second coach light
 Appliances

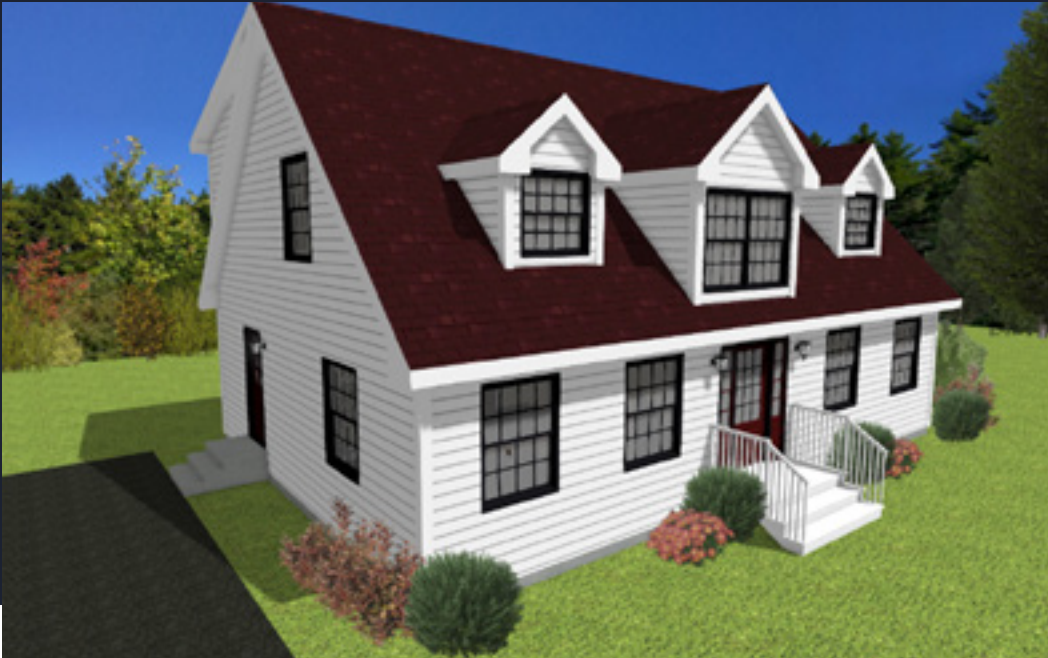


SECOND FLOOR
 850 sq ft



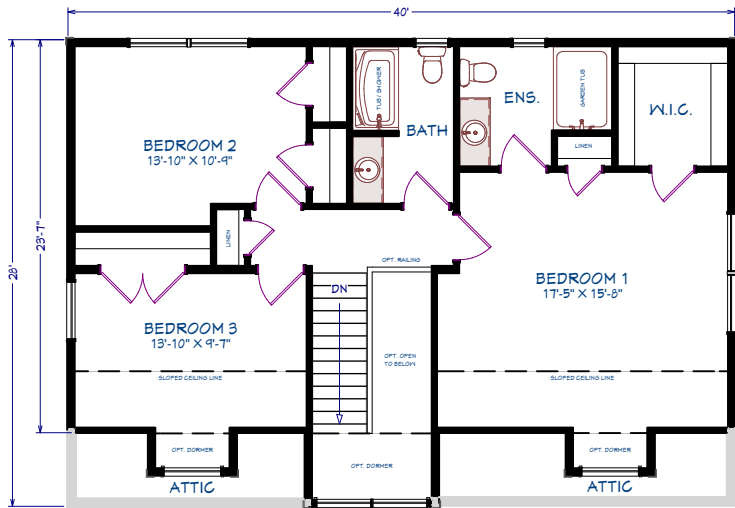
MAIN FLOOR
 3 BEDROOMS, 2 1/2 BATHROOMS
 1008 sq ft

ML306
CAPE COD
2nd floor finished

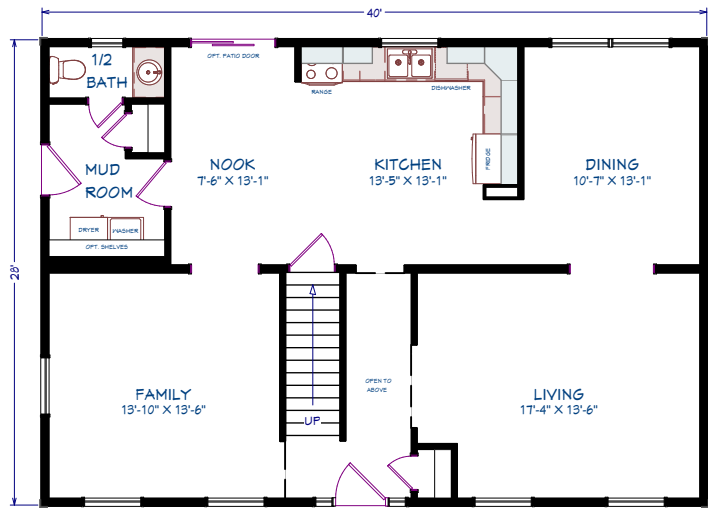


2,064 SQUARE FEET
40' x 28' DIMENSIONS
3 BEDROOMS
2 1/2 BATHROOMS

- OPTIONS
- 8' Gable type dormer
 - 5' Gable type dormer
 - Front door 3/4 glass and sidelights
 - Second coach light
 - Window and door trim colour
 - Patio door
 - Appliances



SECOND FLOOR
944 sq ft



MAIN FLOOR
3 BEDROOMS, 2 1/2 BATHROOMS
1120 sq ft

ML307

CAPE COD

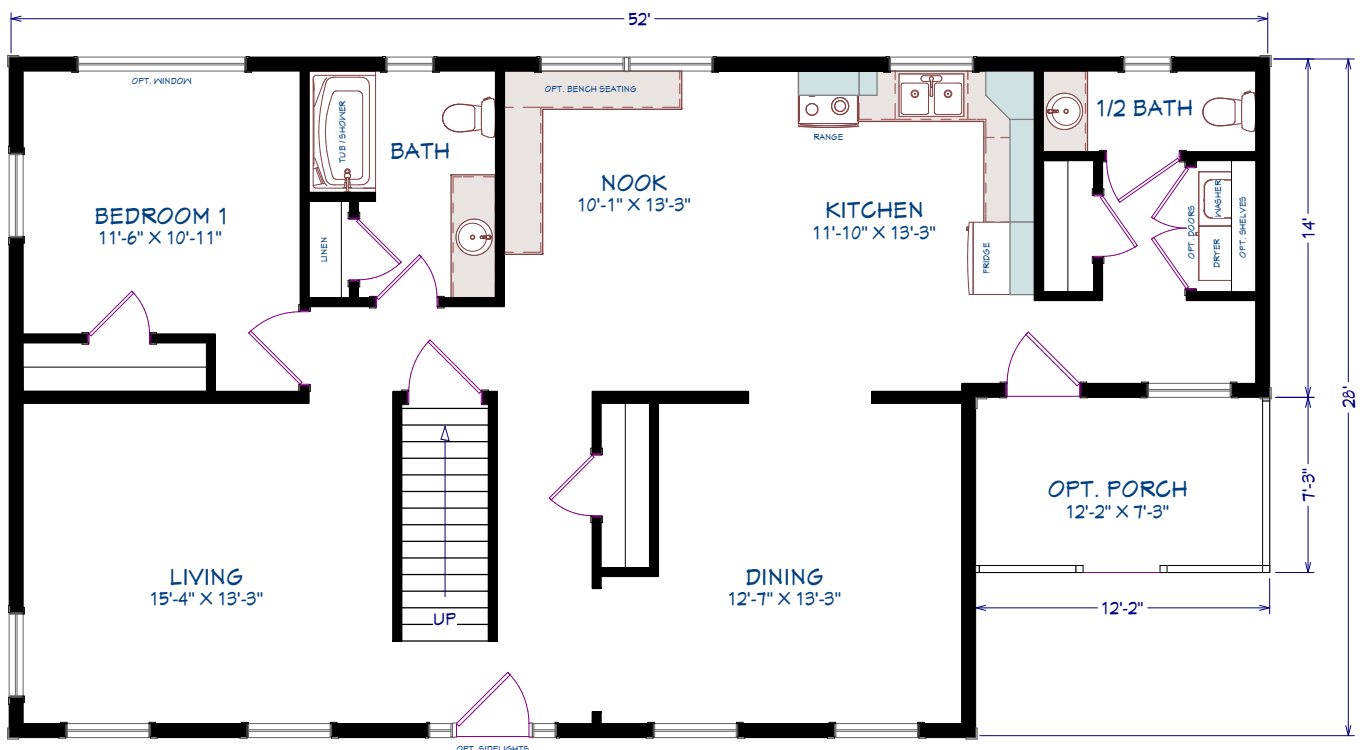
2nd floor unfinished



1,285 SQUARE FEET
52' x 28' 14" DIMENSIONS
1 BEDROOM
1 1/2 BATHROOMS

OPTIONS

8' Gable dormers
Porch and railings
Front door 3/4 glass and sidelights
Window and door trim colour
Upper Queen Anne grills
3 1/2" Window trim
Coloured siding accessories
Appliances



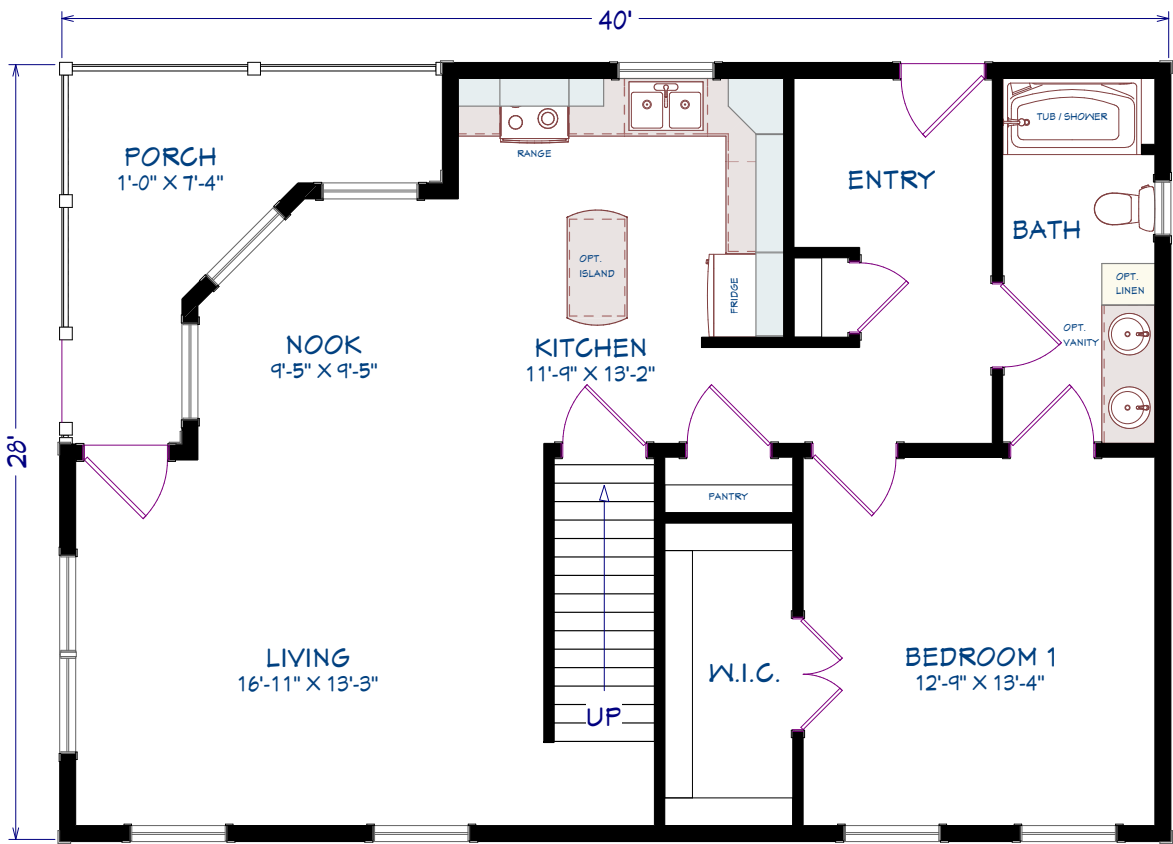
1 BEDROOM, 1 1/2 BATHROOMS
1285 SQ. FT.

ML308
CAPE COD
2nd floor unfinished



1,010 SQUARE FEET
40' x 28' DIMENSIONS
1 BEDROOM
1 BATHROOM

- OPTIONS
- Wrap around porch and railings
 - Upper window grills
 - Window pediment
 - Stone vinyl siding
 - Appliances



1 BEDROOM, 1 BATHROOM
1010 SQ FT

ML309

CHALET

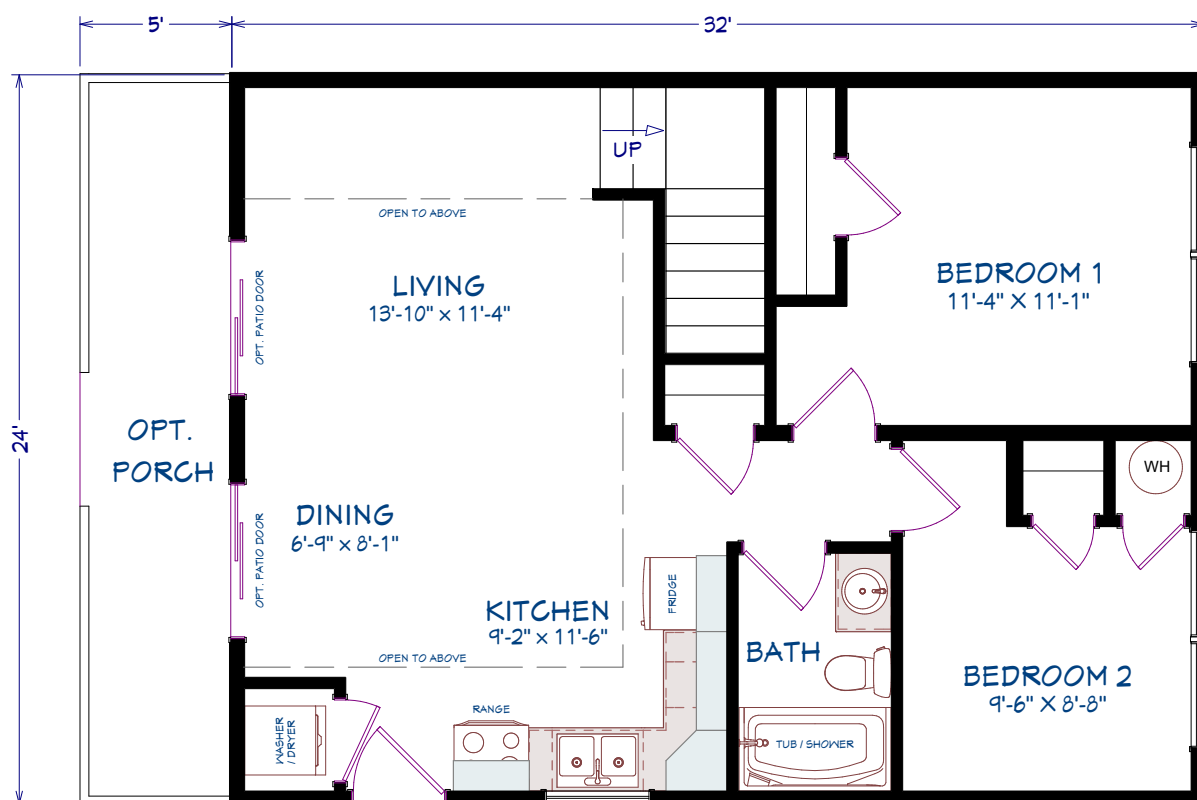
2nd floor unfinished



768 SQUARE FEET
32' x 24' DIMENSIONS
2 BEDROOMS
1 BATHROOM

OPTIONS

Porch and railing
Patio doors
No window grills
Side door ¾ glass
Trapezoid windows
Appliances



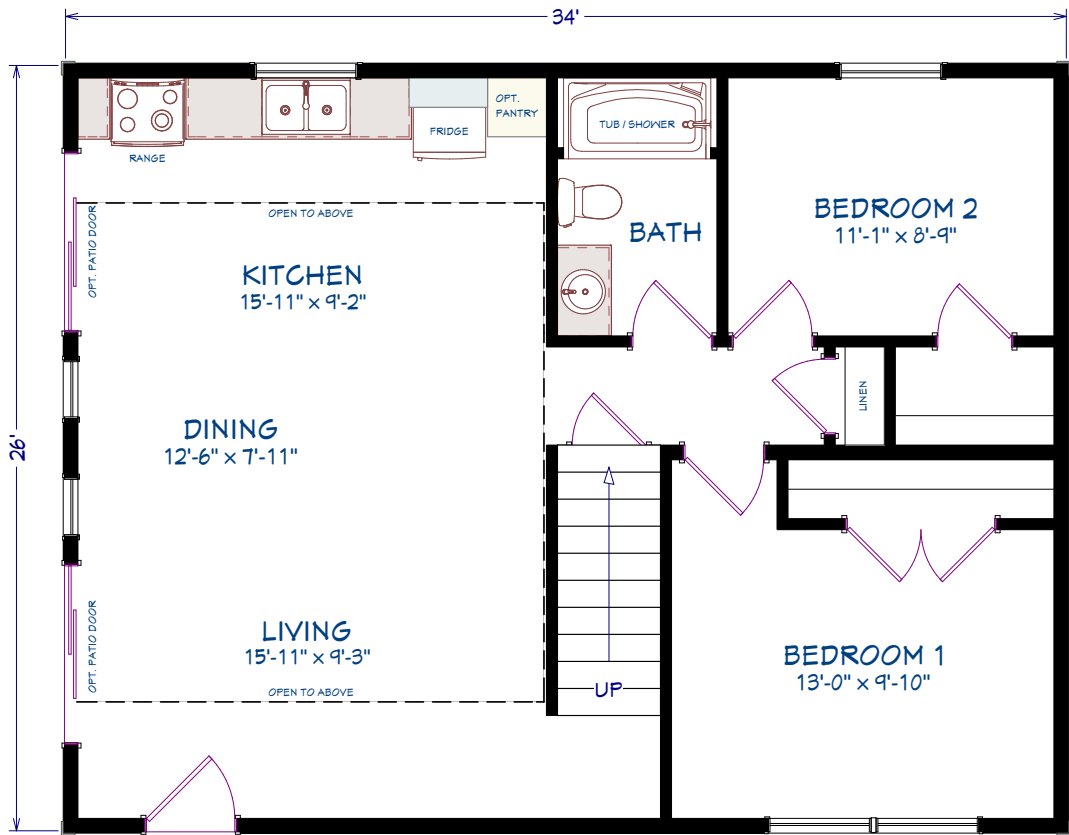
2 BEDROOMS, 1 BATHROOM
768 SQ FT

ML310
CHALET
2nd floor unfinished



884 SQUARE FEET
34' x 26' DIMENSIONS
2 BEDROOMS
1 BATHROOM

- OPTIONS
- Custom second floor windows
 - 24" x 24" Fixed windows
 - Patio doors
 - Queen Anne window grills
 - Appliances

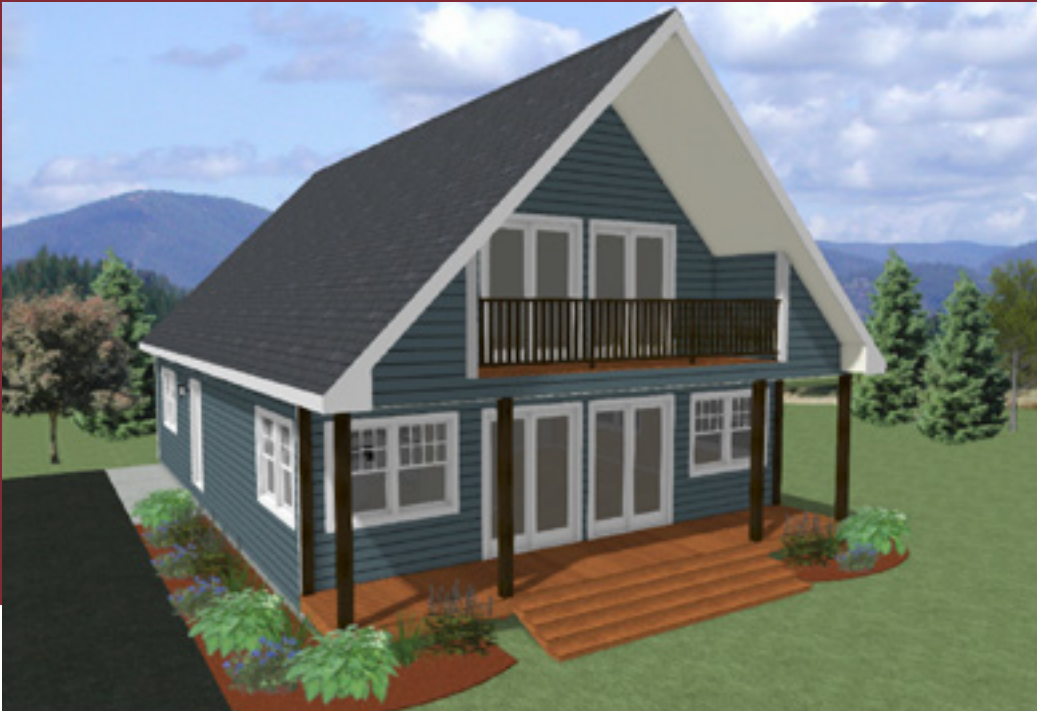


2 BEDROOMS, 1 BATHROOM
884 SQ FT

ML311

CHALET

2nd floor unfinished



1,120 SQUARE FEET
40' x 28' DIMENSIONS
2 BEDROOMS
1 BATHROOM

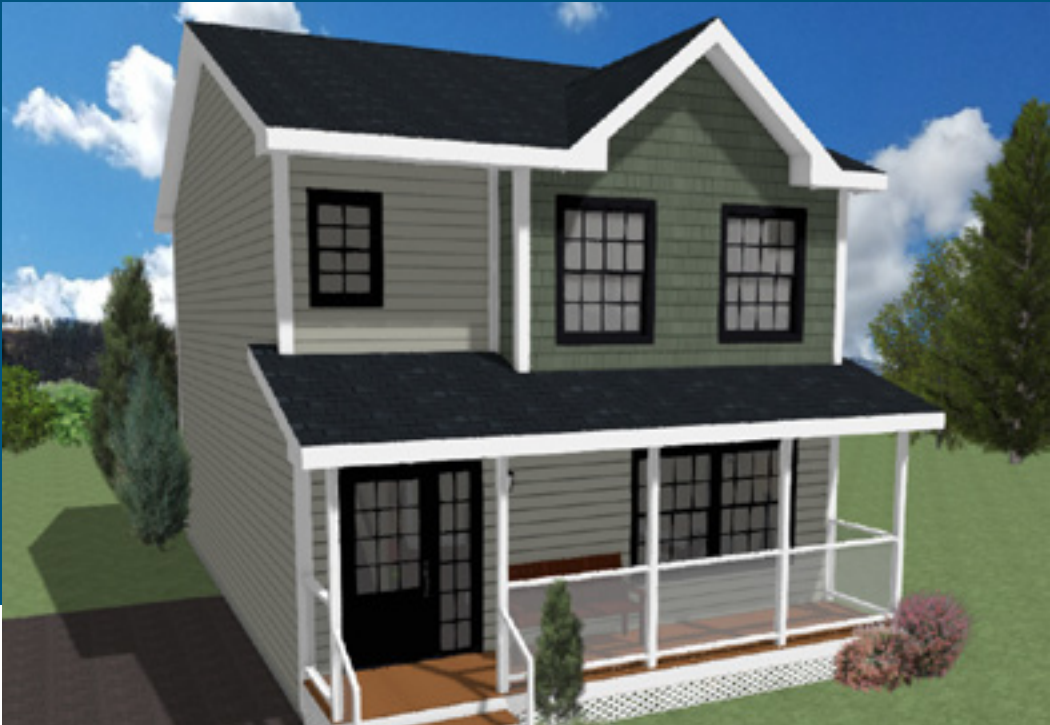
OPTIONS

First and second floor porch with railing and roof above
First and second floor patio doors
Upper window grills
3 1/2" Window trim
Second dining room window
Appliances



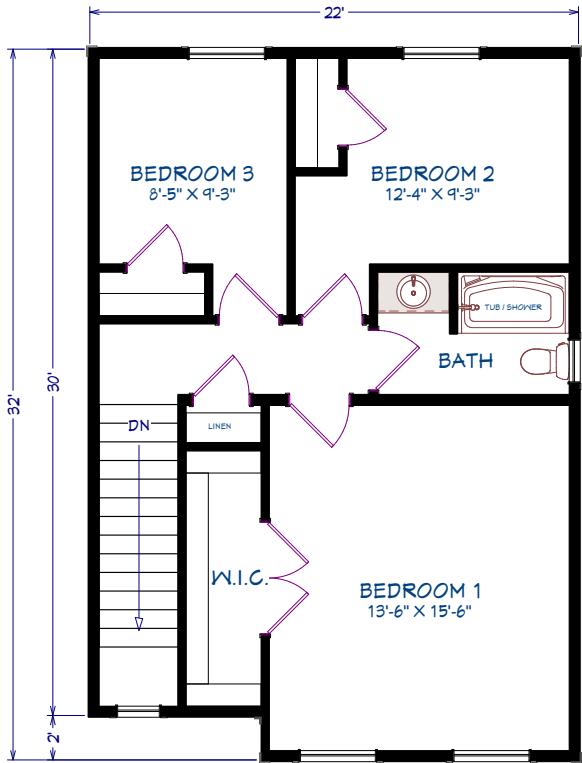
2 BEDROOMS, 1 BATHROOM
1120 SQ FT

ML312
TWO-STOREY

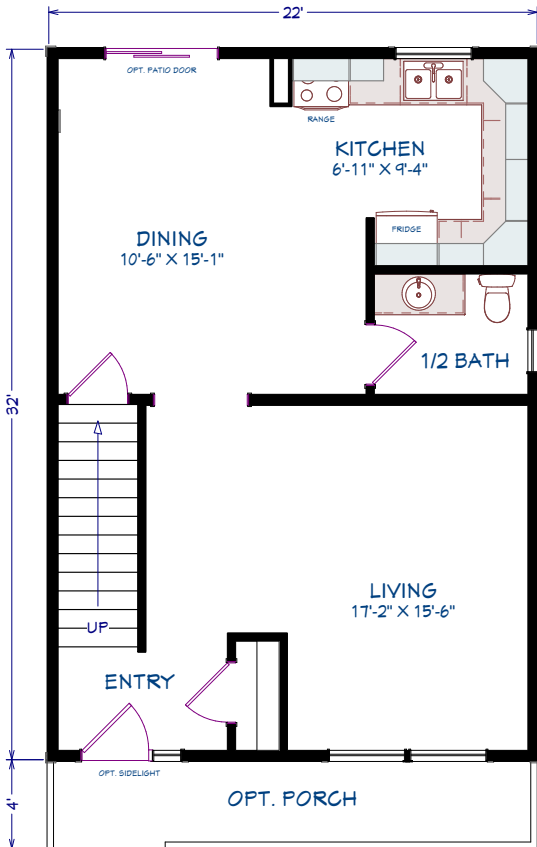


1,392 SQUARE FEET
32' x 22' DIMENSIONS
3 BEDROOMS
1 ½ BATHROOMS

- OPTIONS
- 4' Porch, railings and roof above
 - Front door ¾ glass and full side light
 - 3 ½" Window and door trim
 - Window and door trim colour
 - Shake vinyl siding
 - Large dormer
 - Patio door
 - Appliances



SECOND FLOOR
688 sq ft



MAIN FLOOR
3 BEDROOMS, 1 1/2 BATHROOMS
704 sq ft

ML313

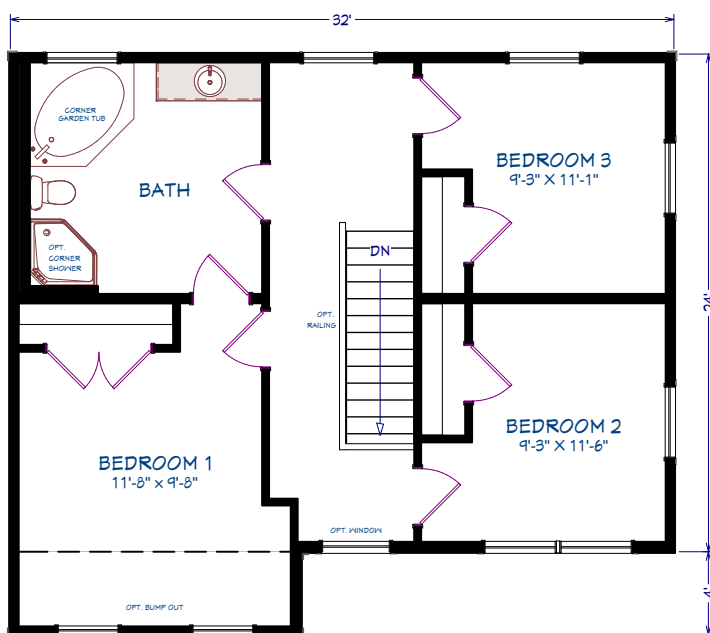
TWO-STOREY



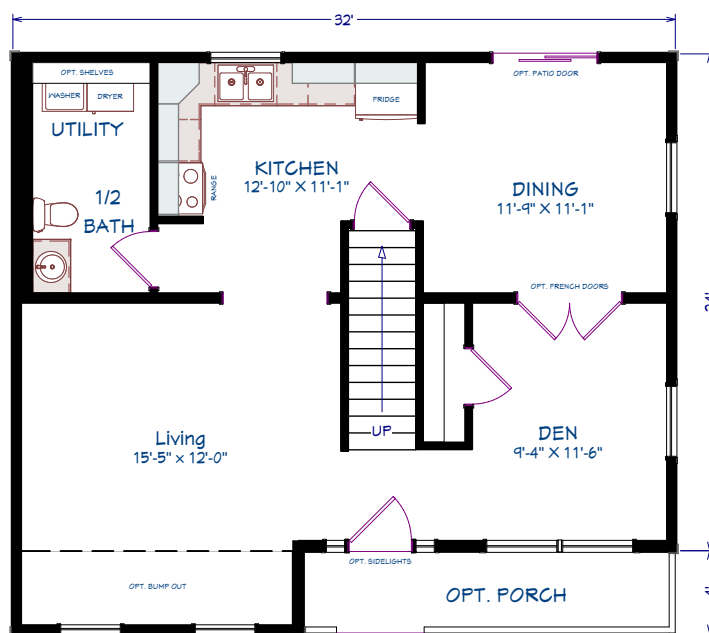
1,536 SQUARE FEET
32' x 24' DIMENSIONS
3 BEDROOMS
1 1/2 BATHROOMS

OPTIONS

- 4' Bump out
- 4' Porch, railings and roof above
- Front door 3/4 glass and double side lights
- Queen Anne door and window grills
- 3 1/2" Window trim
- Round window
- Second bedroom windows
- Patio door
- Dormers
- Appliances



SECOND FLOOR
768 sq ft



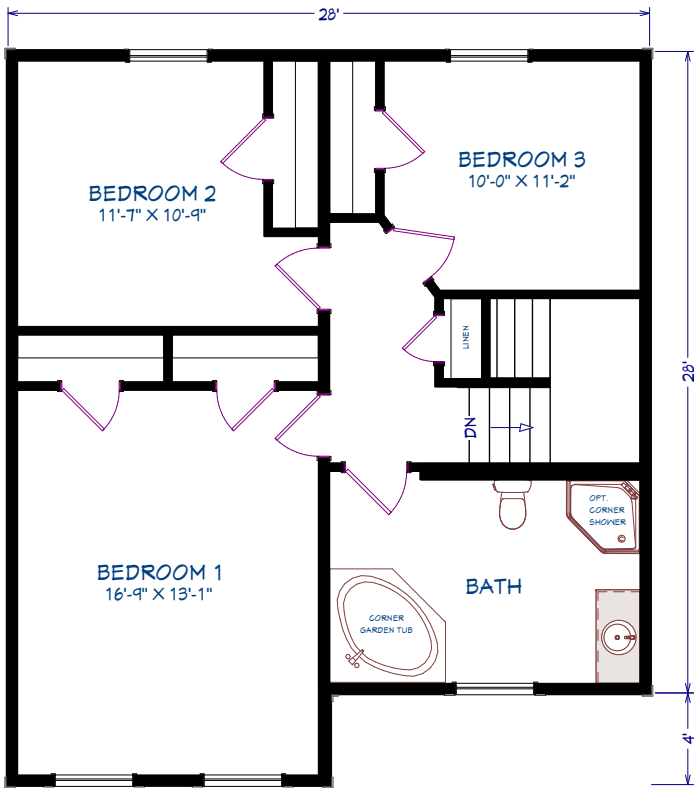
MAIN FLOOR
3 BEDROOMS, 1 1/2 BATHROOMS
768 sq ft

ML314
TWO-STOREY

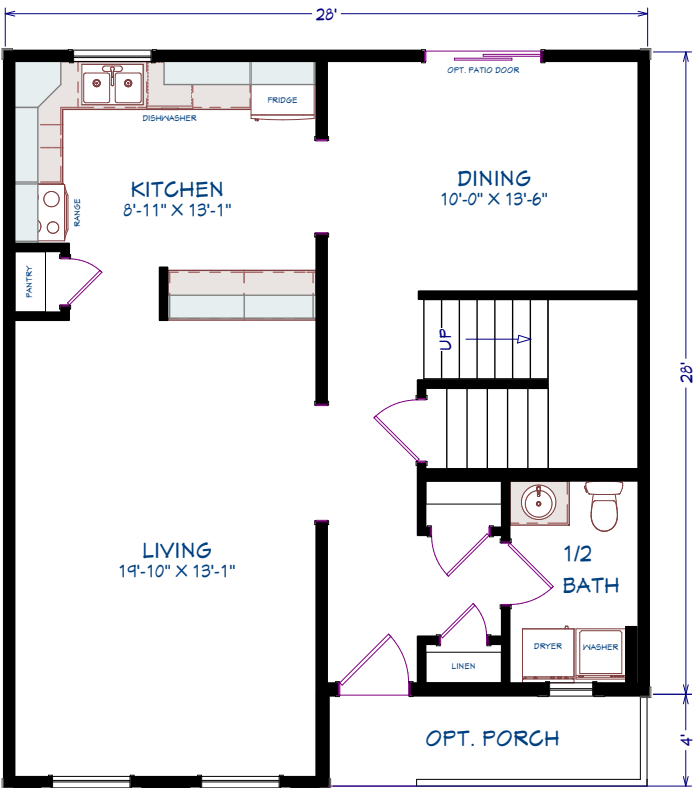


1,680 SQUARE FEET
32'28' x 28' DIMENSIONS
3 BEDROOMS
1 1/2 BATHROOMS

OPTIONS
4' Porch, railings and roof above
3 1/2" Window trim
Patio door
Appliances



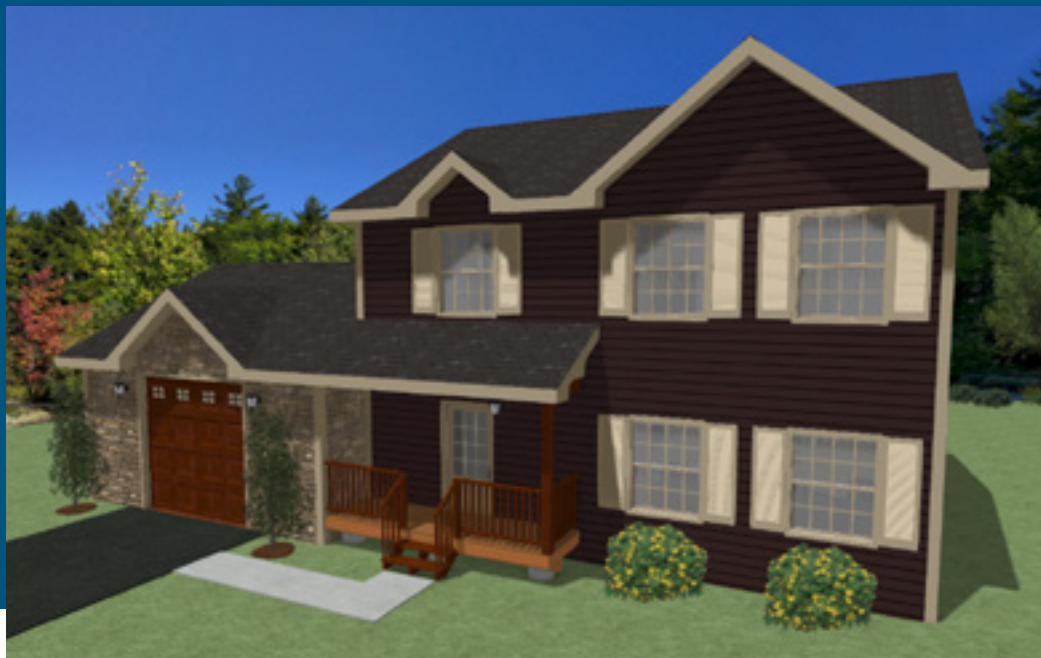
SECOND FLOOR
840 sq ft



MAIN FLOOR
3 BEDROOMS, 1 1/2 BATHROOMS
840 sq ft

ML315

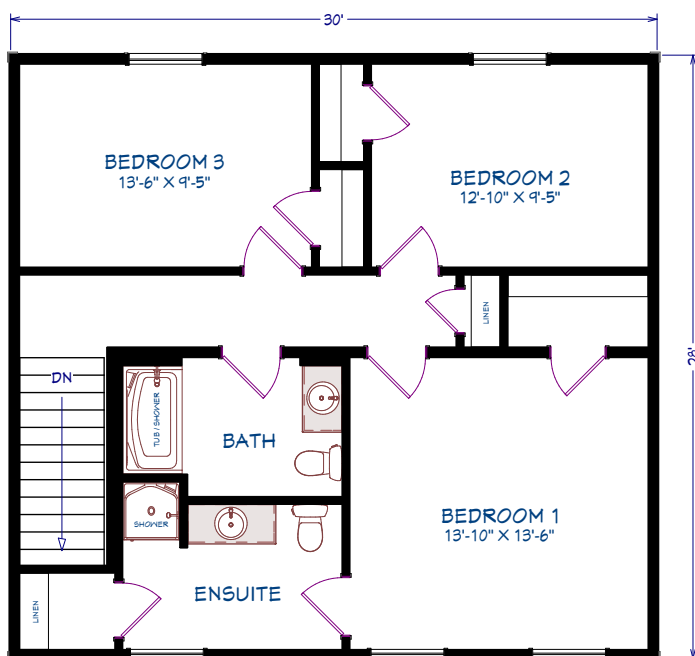
TWO-STOREY



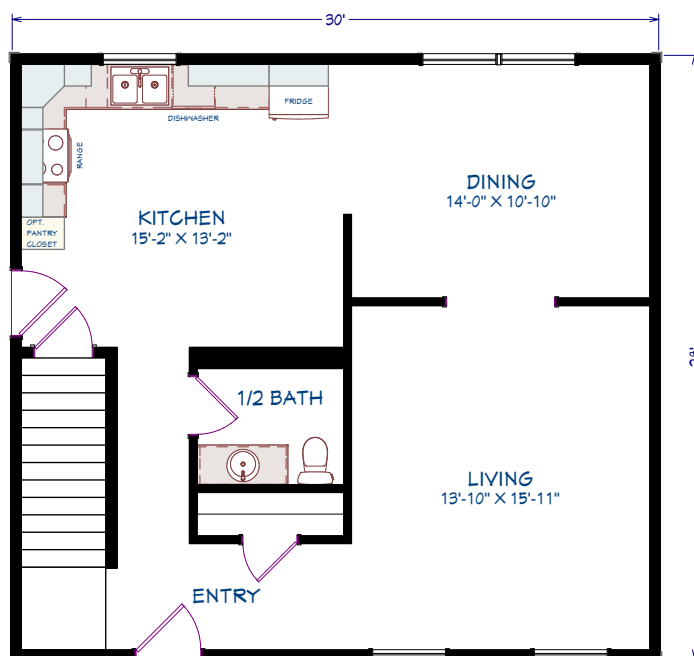
1,680 SQUARE FEET
30' x 28' DIMENSIONS
3 BEDROOMS
2 1/2 BATHROOMS

OPTIONS

- On site garage
- On site porch, railings and roof
- Front door 3/4 glass
- Coloured siding accessories
- Large dormer
- Small dormer
- Appliances



SECOND FLOOR
840 sq ft



MAIN FLOOR
3 BEDROOMS, 2 1/2 BATHROOMS
840 sq ft

ML316
TWO-STOREY

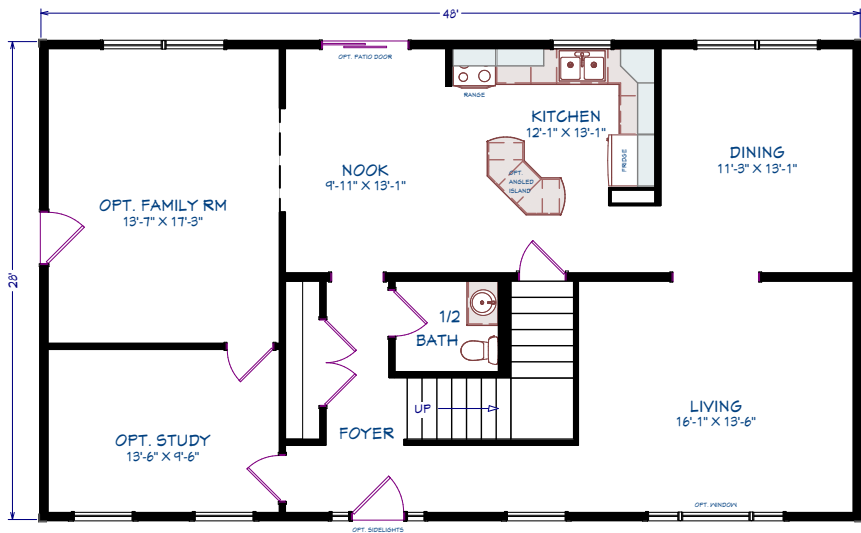


1,904 SQUARE FEET
34' x 28' DIMENSIONS
3 BEDROOMS
2 ½ BATHROOMS

- OPTIONS
- On site porch, railing and roof
 - 3 ½" Window trim
 - Front door ¾ glass and double sidelights
 - Second coach light
 - Living room 8' picture window
 - Patio Door
 - Appliances



SECOND FLOOR
952 sq ft



MAIN FLOOR
3 BEDROOMS, 2 1/2 BATHROOMS
952 sq ft

ML317

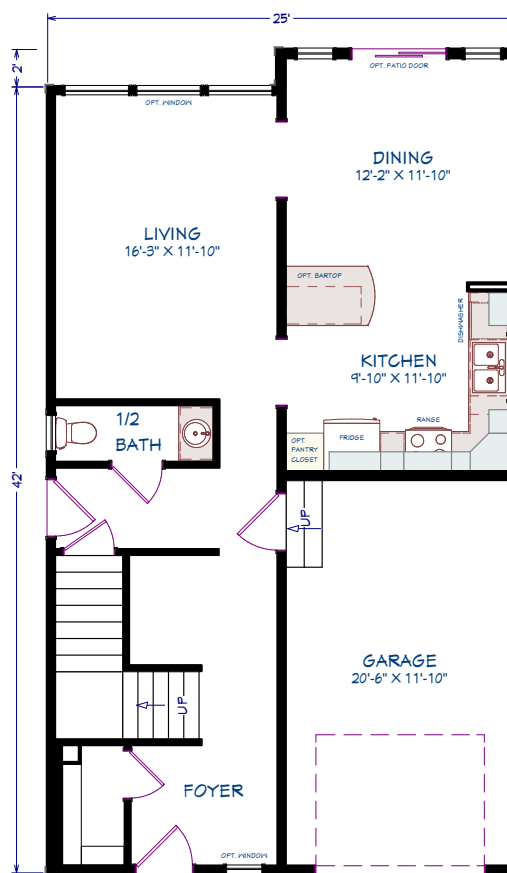
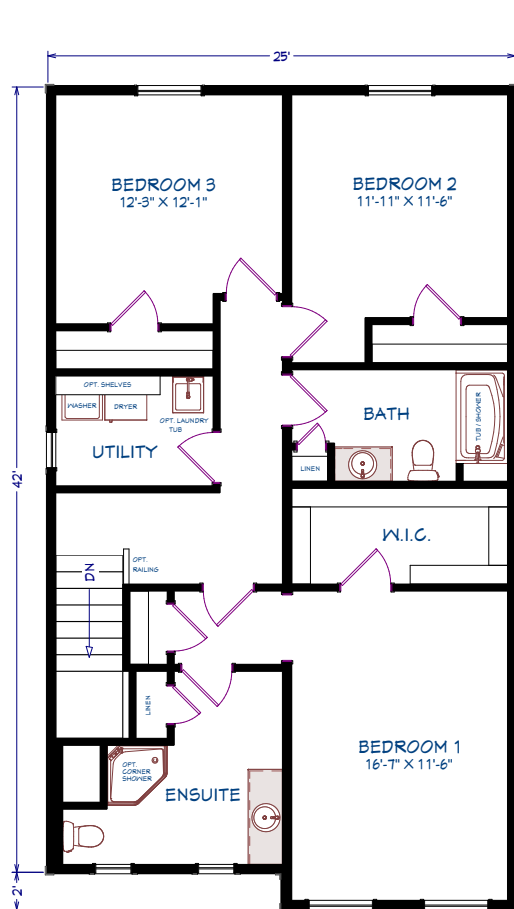
TWO-STOREY



2,148 SQUARE FEET
42'/44' x 25' DIMENSIONS
3 BEDROOMS
2 1/2 BATHROOMS

OPTIONS

Porch, railings and roof above
Eyebrows and dust pan eaves
Front door 3/4 glass
3 1/2" Window trim
Round entry window
Patio door
Mulled living room window
Second coach light
Appliances

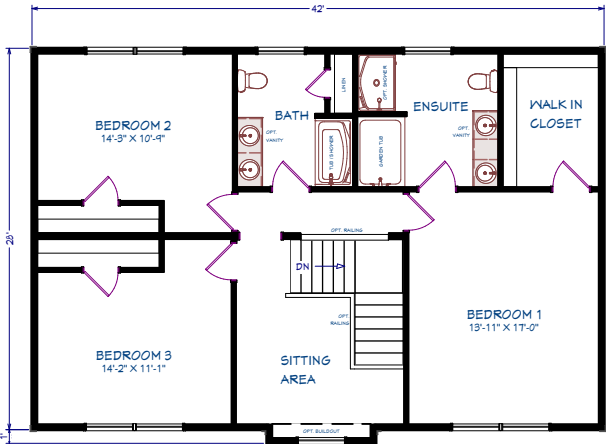


ML318
TWO-STOREY

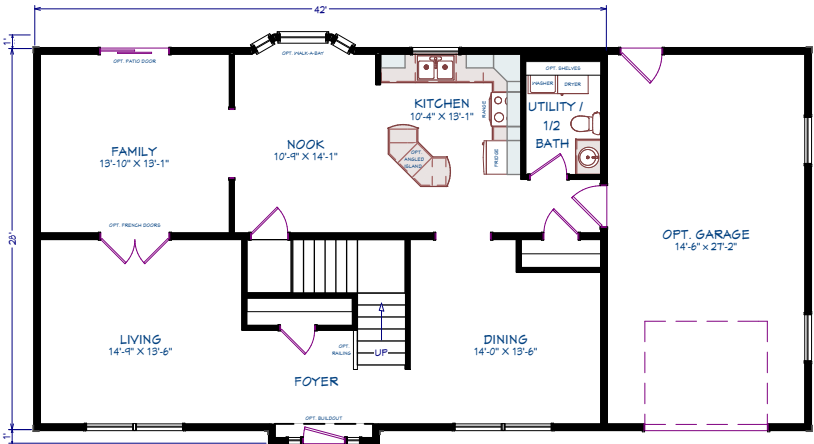


2,352 SQUARE FEET
42' x 28' DIMENSIONS
3 BEDROOMS
2 ½ BATHROOMS

- OPTIONS
- Garage
 - Bump out
 - Dormer
 - Front door ¾ glass and double sidelights
 - Second coach light
 - Round top window
 - Stone vinyl siding
 - Walk a bay window
 - Patio door
 - Appliances



SECOND FLOOR
1176 sq ft

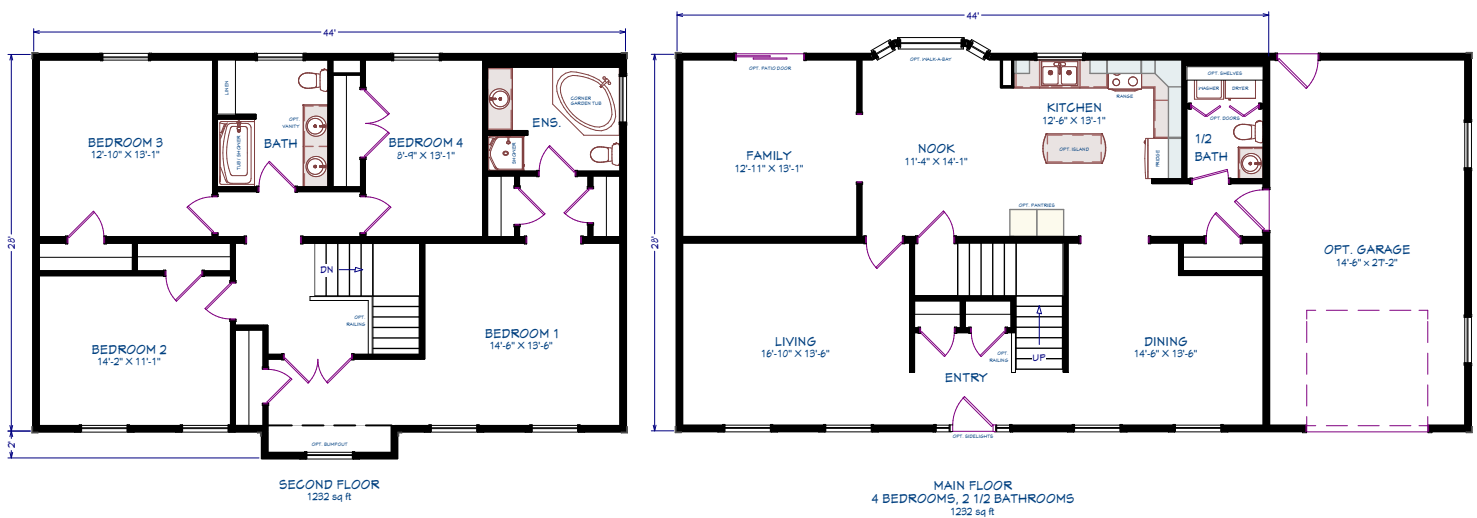


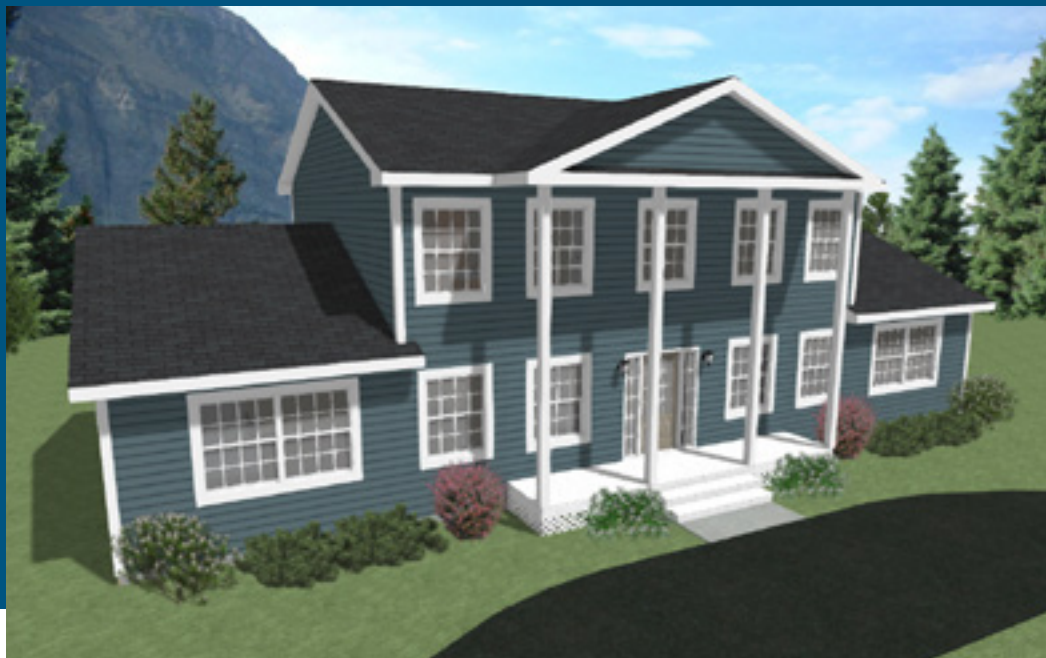
MAIN FLOOR
3 BEDROOMS, 2 1/2 BATHROOMS
1176 sq ft



2,464 SQUARE FEET
44' x 28' DIMENSIONS
4 BEDROOMS
2 1/2 BATHROOMS

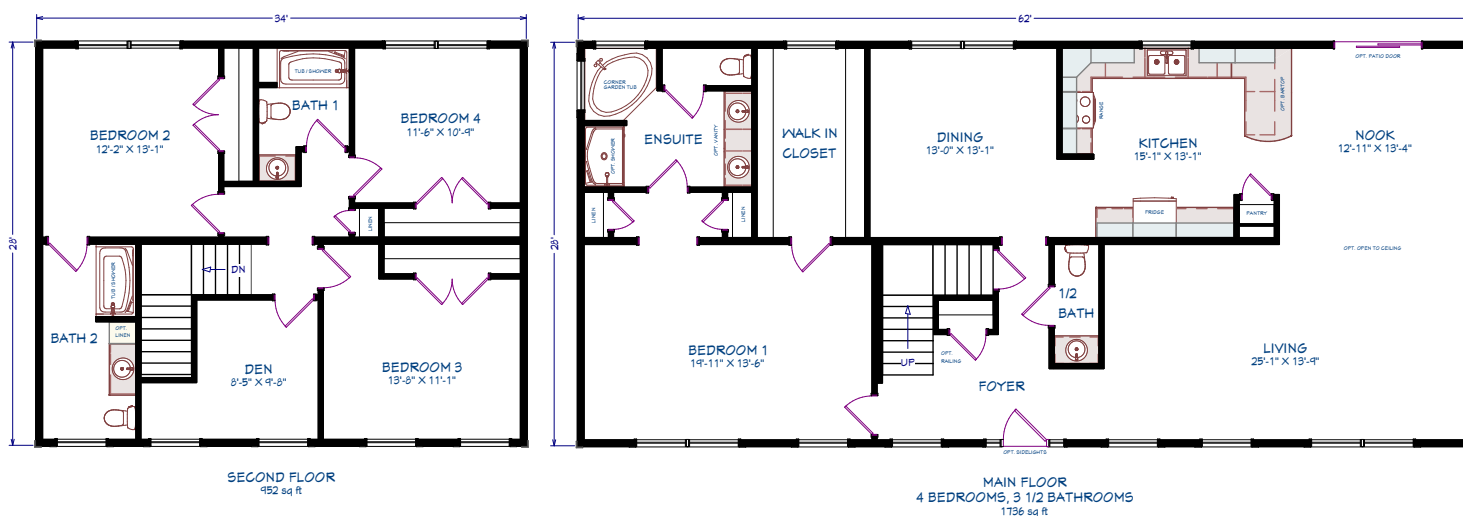
- Garage
- Second floor bump out
- Dormer and dust pan eave
- 3 ½" Window trim
- Front door glass and double sidelights
- Coloured siding accessories
- Shake vinyl siding
- Walk a bay bump out
- Patio door
- Appliances



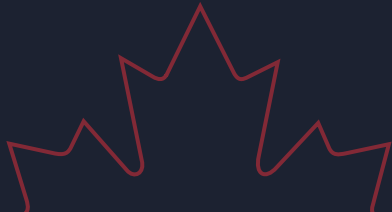


OPTIONS

Large extended dormer with dust pan
eave and columns
5 ½" Window trim
Front door ¾ glass and double sidelights
Second coach light
Patio door
Appliances



NOTES



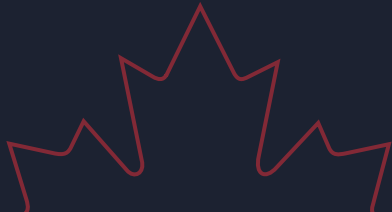
Notes section containing multiple horizontal dotted lines for writing.

NOTES



Notes section with horizontal dotted lines for writing.

NOTES



Notes section with horizontal dotted lines for writing.



WELCOME HOME

All Maple Leaf Home interiors are designed to your exact specifications. Built the way you want it, from flooring to appliances.

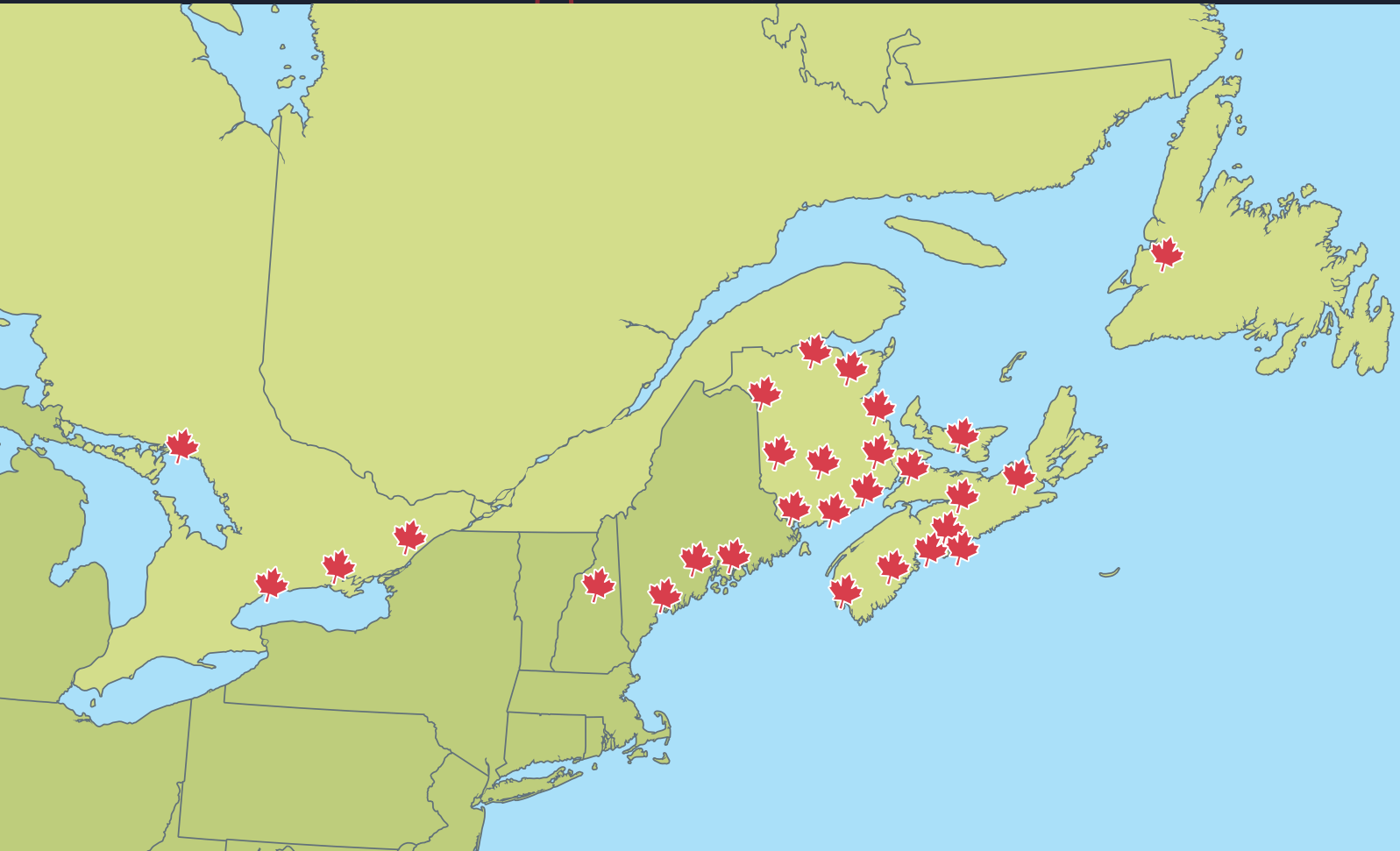
MAPLE LEAF  HOMES

MAPLE LEAF HOMES

You have the option of choosing from our large selection of some of the best designs in the industry or, if you have your own plans, we can work with you to build your home, your way.

Once you choose the floor plan you like, you get to pick your options. There are hundreds of options to choose from, everything from the colour of your siding to the hardware on your kitchen cabinets. We will build your home, your way.

To start designing your new home, visit our website at www.mapleleafhomes.ca to find a retailer in your area.



MAPLE LEAF HOMES

655 Wilsey Road
Fredericton, NB
Canada, E3B 7K3

Tel 506 459 1335
Email hello@mlhomes.ca

NOTE: Maple Leaf Homes reserves the right to make changes to this brochure without prior notice and without incurring any obligations to any previous, present or future customers as the result of any changes made.

RETAILER: