

MAPLE LEAF HOMES



Modular
Homes

**Bungalow
Split Entry**

MAPLE LEAF  HOMES

MAPLE LEAF HOMES

Every Maple Leaf Home is manufactured with high quality materials by experienced craftsmen. You can take comfort in knowing that your investment will be protected by some of the best warranties in the Industry.

- One year Maple Leaf Home manufacturer's warranty against defects in materials and workmanship.
- Limited lifetime warranty on roofing shingles provided by shingles manufacturer.
- Limited lifetime warranty on vinyl siding provided by siding manufacturer.
- Limited lifetime warranty on fixtures provided by fixtures manufacturer.
- Limited lifetime warranty available on windows by the window manufacturer.
- 10 year limited structural warranty available through Atlantic Home Warranty Corporation (available in Atlantic Canada).



WHY CHOOSE A MAPLE LEAF HOME?



- Locally owned and operated since 1985
- Award winning manufacturer for energy efficiency and customer satisfaction
- Industry leading manufacturer of energy efficient homes
- Energuide and Energy-Star certified builder
- Over 30 convenient locations to serve you better throughout Atlantic Canada, Quebec, Ontario and the New England States
- The most comprehensive warranties in the industry to protect your investment
- High quality custom cabinetry and interior finishes
- Efficiently manufactured indoors in a controlled environment
- In-plant quality control for every step of the manufacturing process ensures a top quality product that meets or exceeds the most up to date building codes
- Accurate scheduling – no weather delays
- No cost overruns – no waiting for sub contractors
- Environmentally friendly production – waste is reduced and recycling is maximized
- Plywood floor and wall construction
- Pre-engineered and individually custom built
- Premium building materials to assure top performance and service
- Professionally designed plans to ensure functionality for comfortable living
- Quality and innovations that are responsive to your living needs and wishes
- Custom designed plans

All Maple Leaf Homes include these standard features:

- Limited lifetime warranty on roof shingles
- Limited lifetime warranty on vinyl siding
- High quality designer cabinets
- Kiln dried lumber
- Quality plumbing fixtures
- Plywood floor and wall construction
- Painted wood interior trim (no MDF)
- Energy efficient
- 30 year warranty on windows

SIGNATURE

BUNGALOW / RANCH



3 BEDROOMS
2 BATHROOMS

1,636 SQUARE FEET
68' x 32' DIMENSIONS

OPTIONS

Roof Pitch - 7/12 Center Module & 10/12 Side Modules

9ft. Walls in center module,
8ft. Walls in side modules

R22 wall insulation / R31 floor insulation / R50 roof insulation

Board & batten siding – vinyl shake siding at peak of gables

Kohltech front door – fiberglass fir wood door w/ sidelites & transom, stained chestnut

Black casement by Kohltech windows & entrance systems

Sliding patio door

Iron ore trim & fascia

Timber framed front entry

Large covered porch

Custom entry bench

Quartz countertops in kitchen

Upgrade cabinets

Tile backsplash, 3"x6" subway tile

84" Island c/w 48" bartop

Beverage station in living room

Optional stairs to basement

Vaulted ceilings in bedroom 2 & mudroom

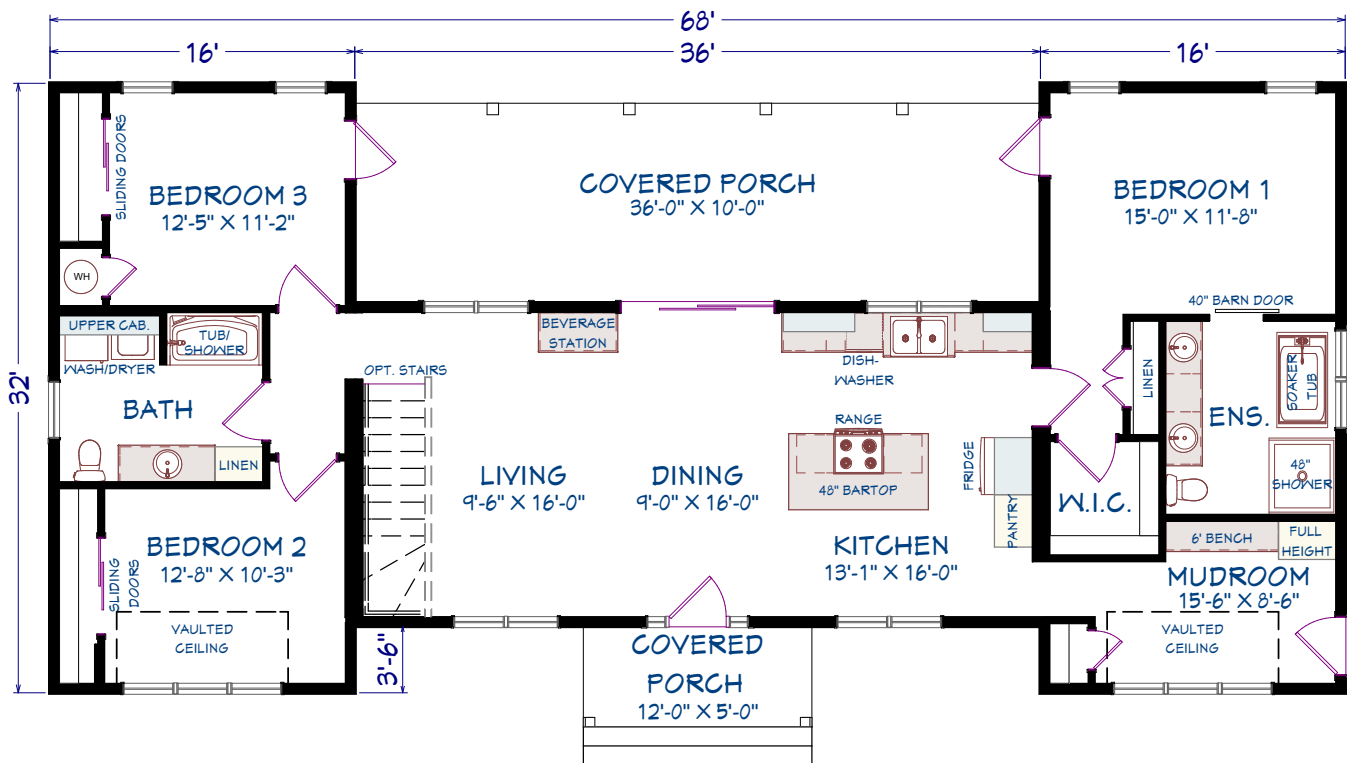
Upgrade interior door, hardware & trim package

Upgrade plumbing fixtures & faucets

Upgrade LED lighting throughout

Appliances

* Some items shown may be an option.



3 BEDROOMS, 2 BATHROOMS

1636 FINISHED SF

360 PORCH SF

1996 TOTAL SF

RETREAT
BUNGALOW / RANCH



2 BEDROOMS
2 BATHROOMS

1,224 SQUARE FEET
68' x 18' DIMENSIONS

OPTIONS

- Shed style roof – 1.25/12 Slope
- R22 wall insulation - R50 roof insulation – R31 floor insulation
- Natural eastern white cedar shingle siding
- Kaycan urbanix vertical siding in recessed entry
- Kohltech bronze front door – deco glass – full glass sidelight
- Kohltech bronze back door with transom – full glass
- Custom Kohltech windows – int. White & ext. Bronze
- 9 ft. Select series Kohltech sliding patio door – center operator with sliding screen door
- Recessed entry with exterior shower and privacy wall
- Durafusion luxury vinyl tile throughout
- Horizontal white washed pine board dining room wall with 84" x 18" pine floating bench
- Upgraded cabinets
- Linen and full length washer/dryer cabinets in laundry
- Berkley interior door & trim package
- Lever style door hardware, Canaropa "the flat" - chrome
- White wash 1"x 6" square edge t&g interior pine ceilings throughout
- Upgrade plumbing fixtures and faucets
- Upgraded lighting throughout
- Built in coffee station
- Floating vanities with accent lighting
- Appliances

* Some items shown may be an option.



HOMESTEAD

BUNGALOW / RANCH

2 BEDROOMS
2 BATHROOMS

1,462 SQUARE FEET
50' x 32'
DIMENSIONS

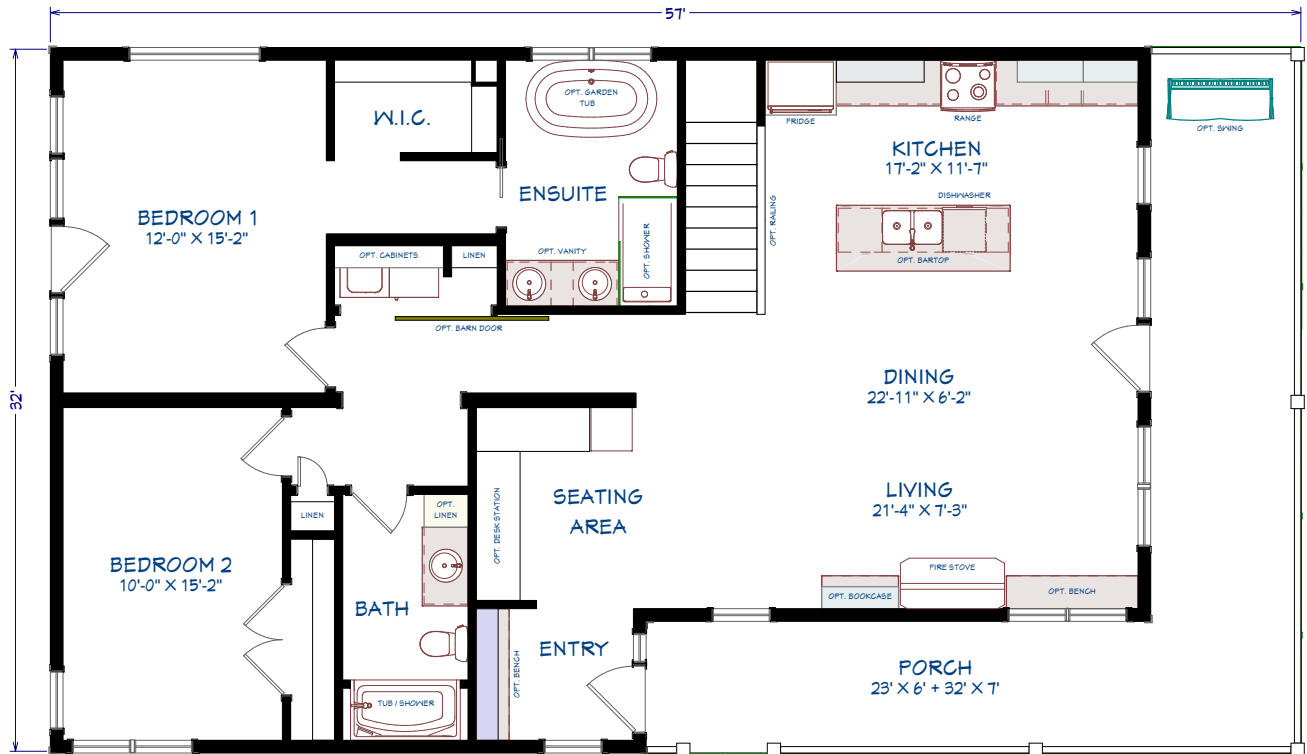


OPTIONS

Diamond kote board & batten siding
Casement windows c/w black out & inside trim
Garden doors c/w black out & inside trim
96" High 5 panel interior doors
Custom desk & bar
Window seat & bookcase around fireplace
Wood burning fireplace w/ stone & custom mantel
Upgraded lighting throughout – w/ interior & exterior downlights in various areas

Front entry bench w/ coat hooks
Cedar porch swing
Rustic 7" wide hardwood flooring
84" Custom barn door painted "old blue jeans"
9'-0" Ceiling
Roof extension over bedroom #1 garden door
Upgrade plumbing fixtures and faucets
Appliances

* Some items shown may be an option.



2 BEDROOMS, 2 BATHROOMS

1462 FINISHED SF
362 PORCH SF
1824 TOTAL SF

COUNTRYVIEW
BUNGALOW / RANCH



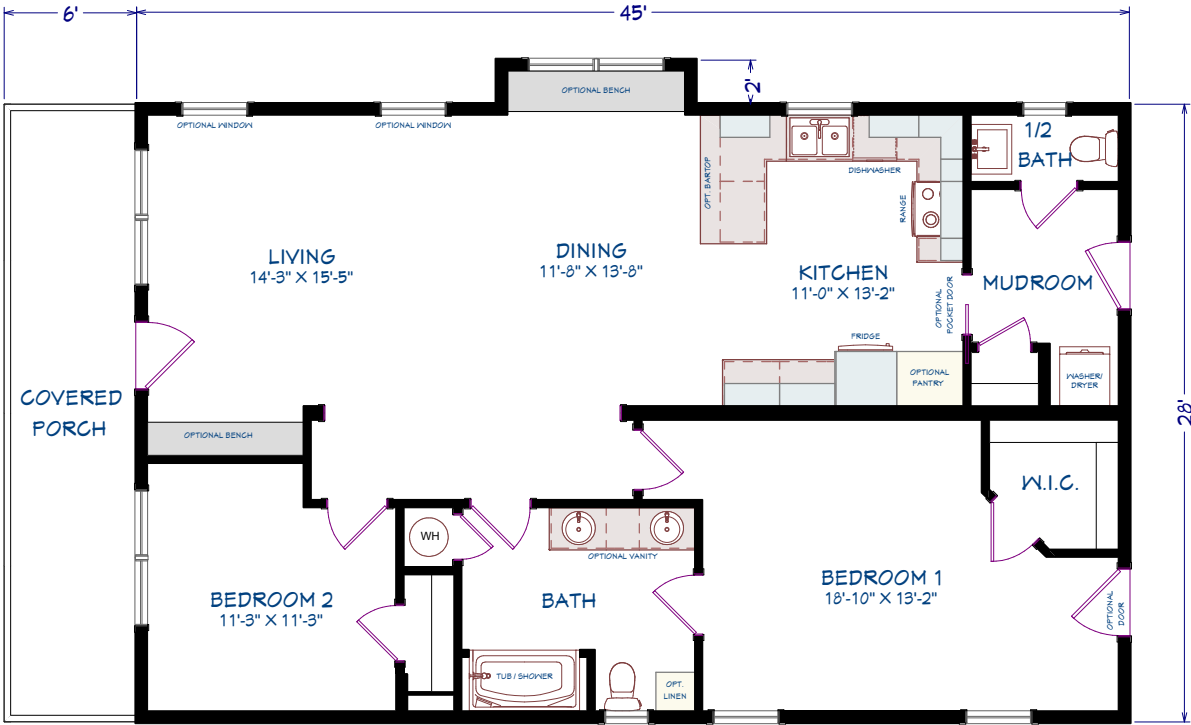
2 BEDROOMS
1.5 BATHROOMS



1,260 SQUARE FEET
45' x 28' DIMENSIONS

OPTIONS

- Upgrade vinyl siding w/ eastern white cedar shingles
- Custom windows c/w black outside trim & white inside trim
- Custom exterior doors c/w black outside trim & white inside trim
- Craftsman smooth interior doors c/w upgrade hardware
- Flat stock interior trim w/ extended window sills
- Upgrade lighting package w/ led bulbs
- Custom benches/ storage at front entry & dining room
- Custom craftsman exterior pillars & trim
- Hardwood flooring throughout main living space & bedrooms
- Ceramic tile in bathrooms & rear entry
- Custom roof style w/ walk-up attic for storage
- Upgrade plumbing fixtures & faucets
- Upgrade kitchen cabinets & hardware
- Appliances



2 BEDROOMS, 1.5 BATHROOMS
1260 SQ FT

ML201

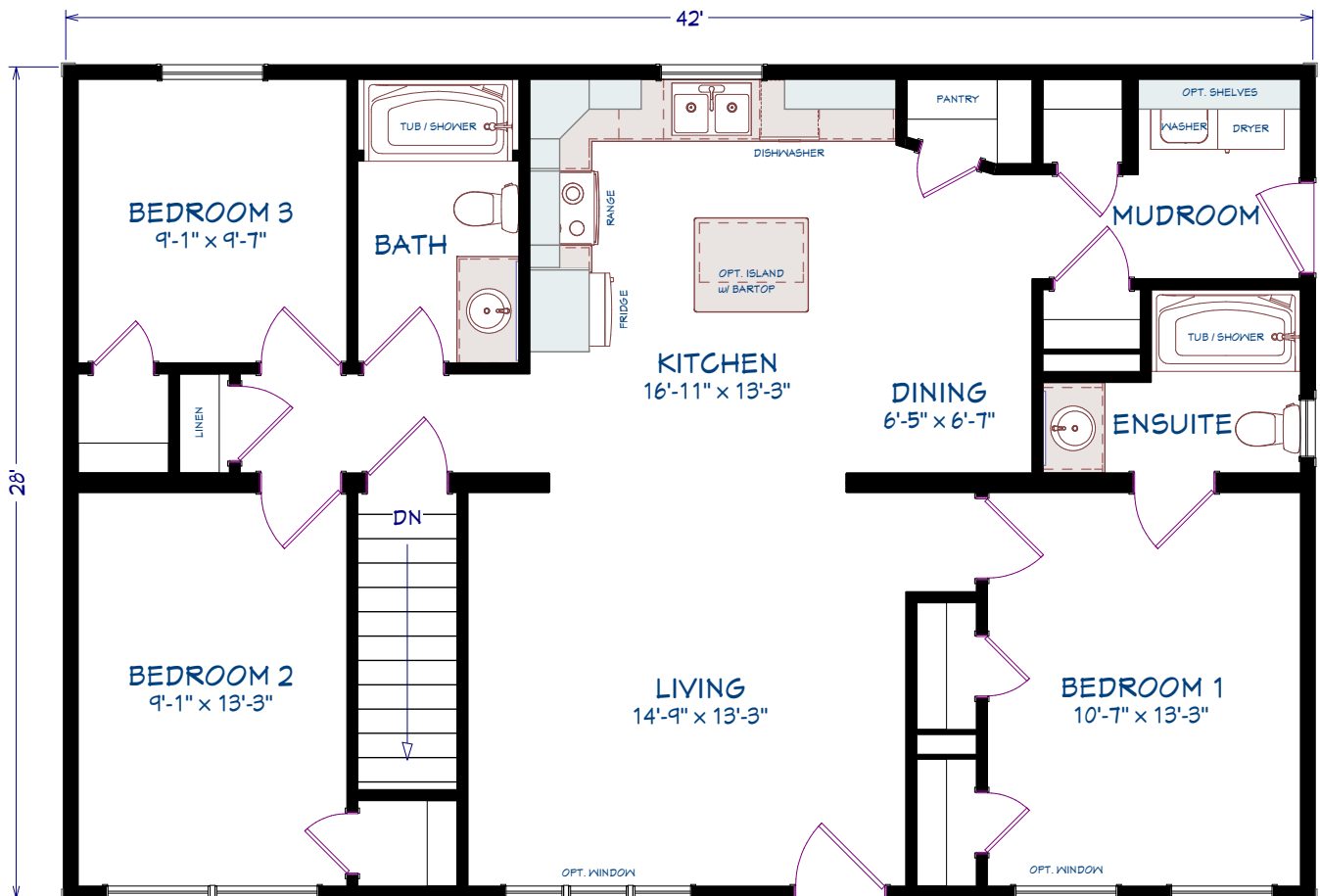
BUNGALOW / RANCH



3 BEDROOMS
2 BATHROOMS
1,176 SQUARE FEET
42' x 28' DIMENSIONS

OPTIONS

Large dormer
Mulled living room window
Second coach light
Upper window grills
3 1/2" Window trim
Appliances
Coloured front door



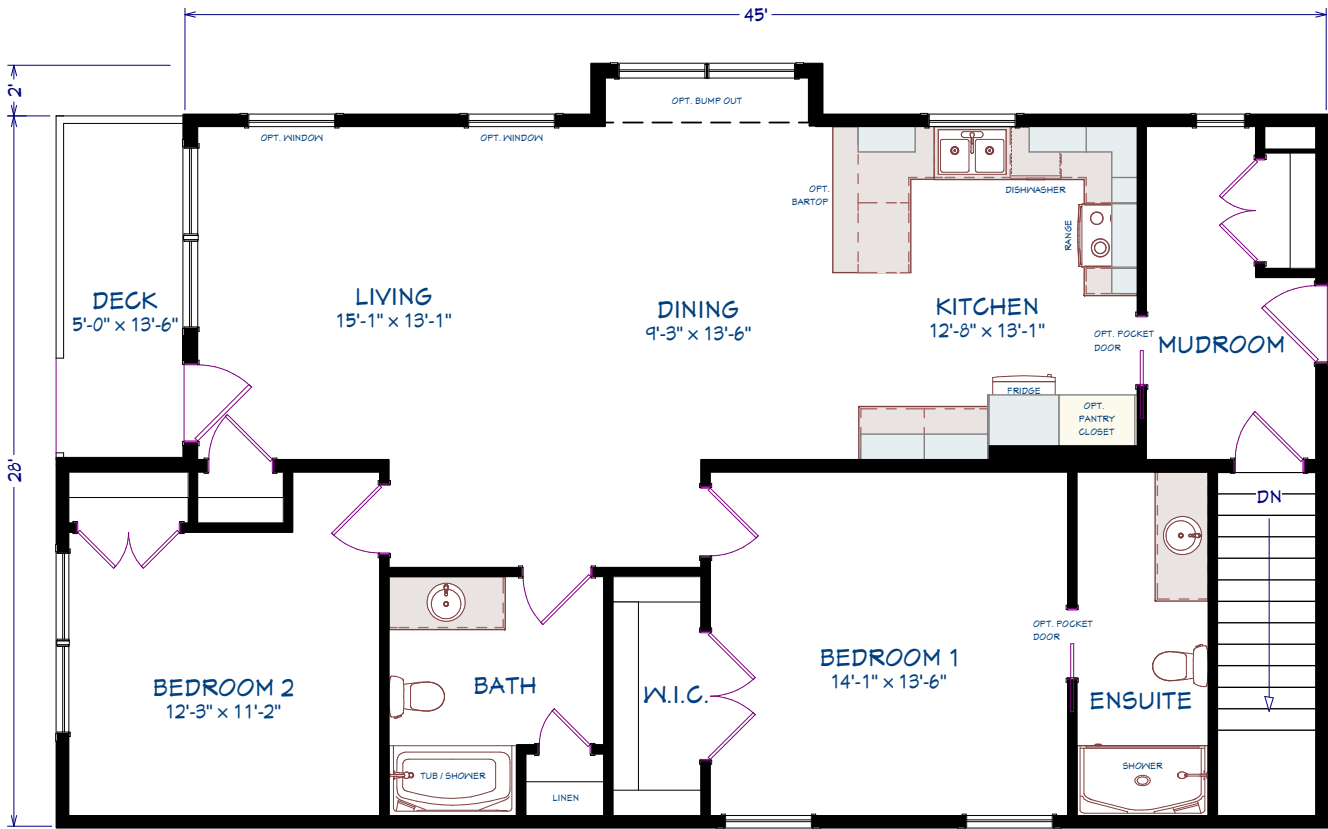
3 BEDROOMS, 2 BATHROOMS
1176 sq ft

ML202
BUNGALOW / RANCH



2 BEDROOMS
2 BATHROOMS
1,330 SQUARE FEET
45'-50' x 28' DIMENSIONS

- OPTIONS
- 5' Porch and railings
 - Bump out
 - Front door ¾ glass
 - Additional living room windows
 - 3 ½" Window trim
 - Bedroom round top window
 - Upper window grills
 - Small gable round top window
 - Stone vinyl siding
 - Appliances



2 BEDROOMS, 2 BATHROOMS
1330 sq ft

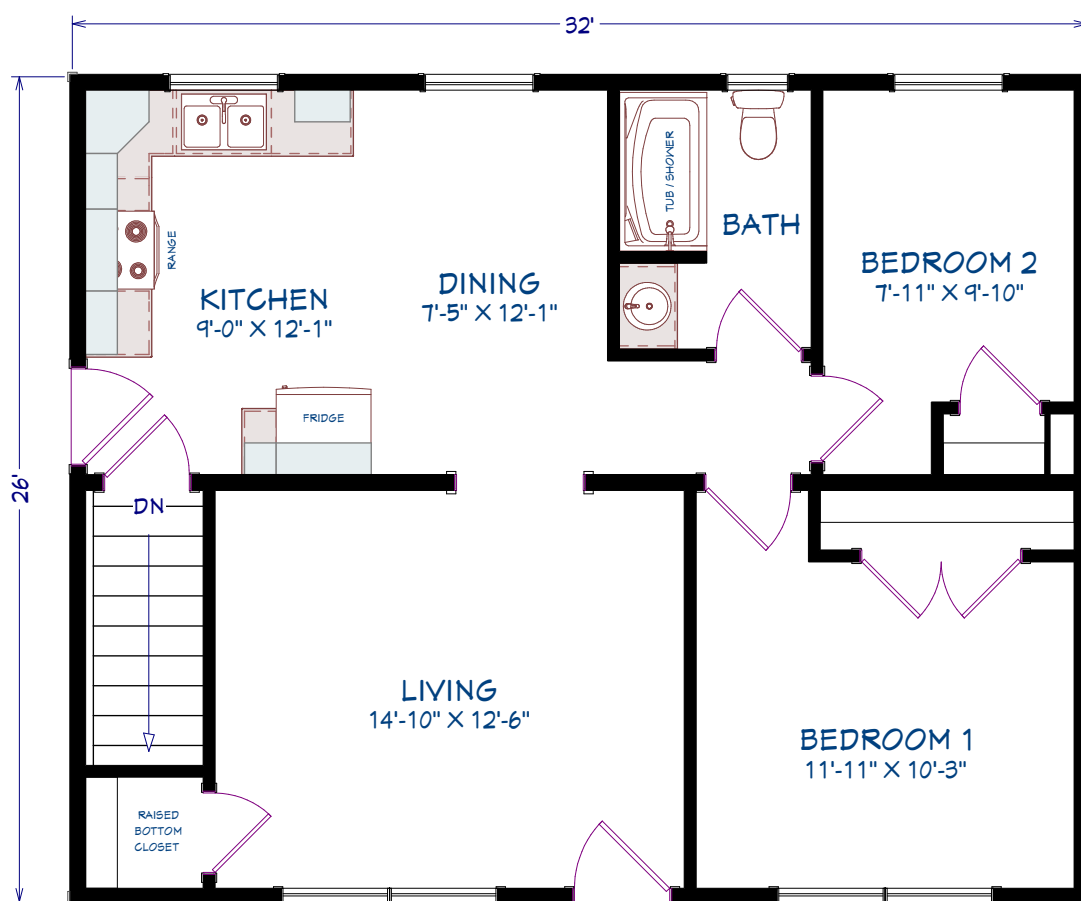
ML203

BUNGALOW / RANCH



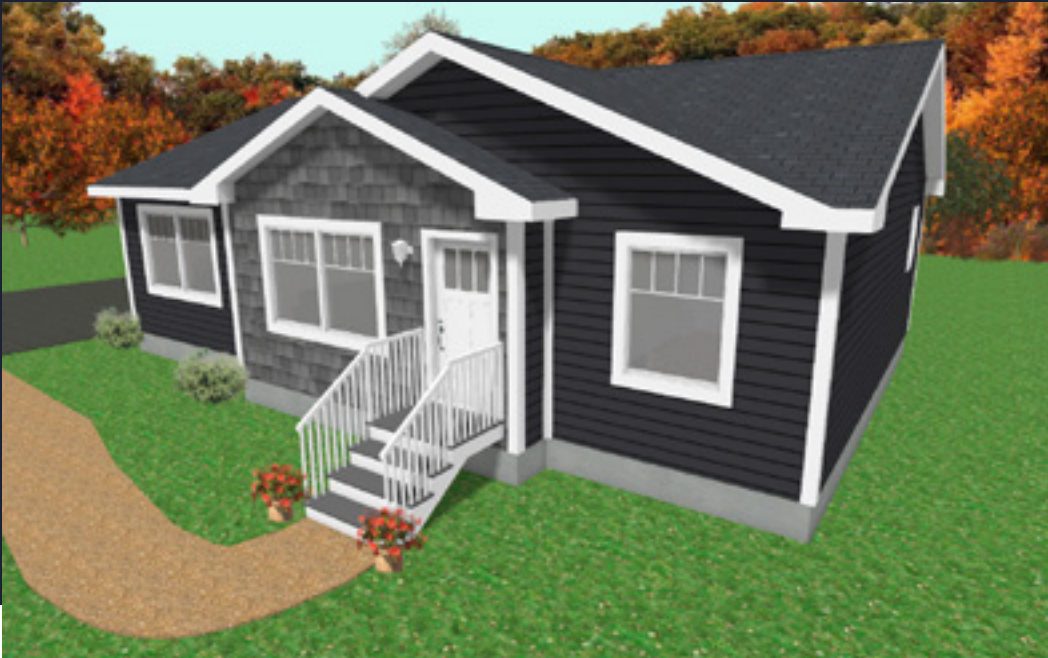
2 BEDROOMS
1 BATHROOM
832 SQUARE FEET
32' x 26' DIMENSIONS

OPTIONS
Large dormer
Eyebrow roof
False pillars
Front door ¾ glass
Queen Anne window grills
3 ½" Window trim
Extra exterior light
Appliances



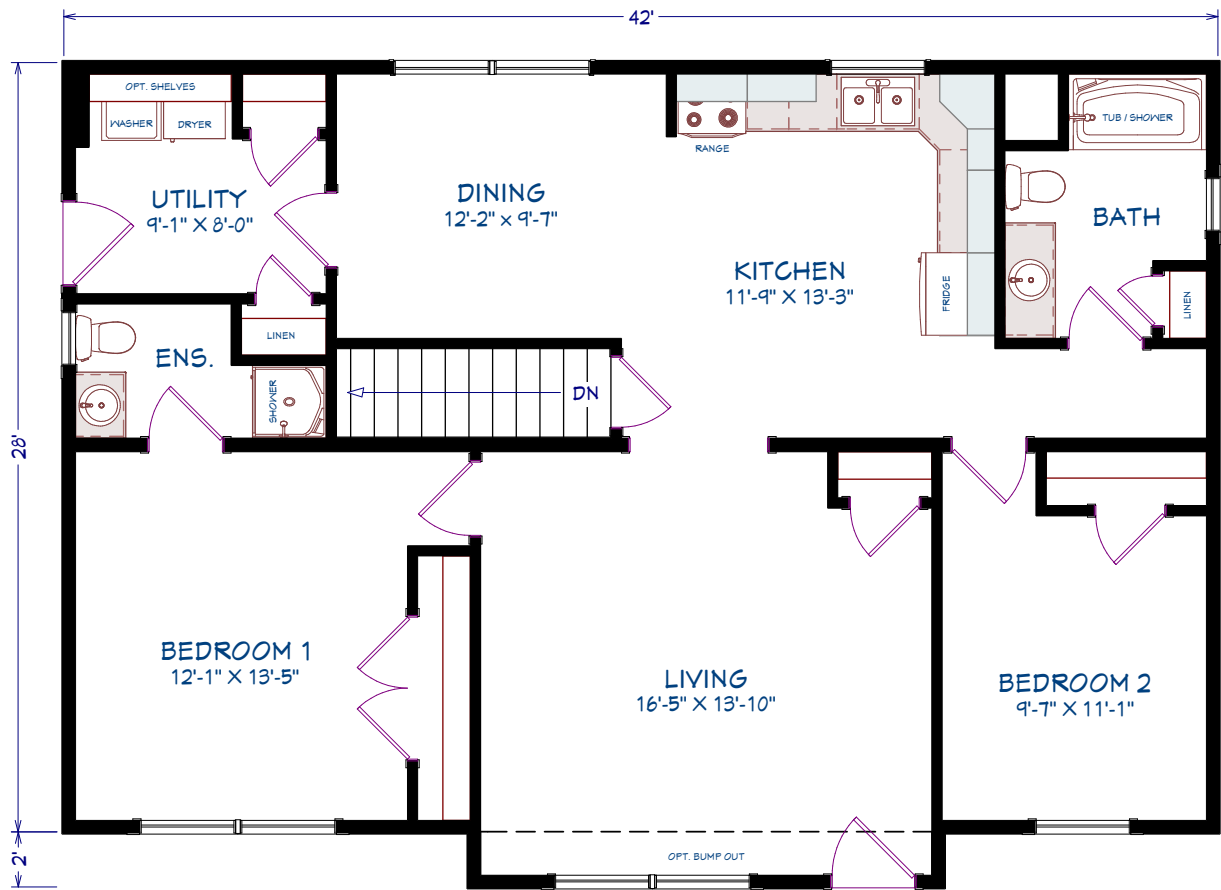
2 BEDROOMS, 1 BATHROOM
832 SQ FT

ML204
BUNGALOW / RANCH



2 BEDROOMS
2 BATHROOMS
1,176 SQUARE FEET
42' x 28' DIMENSIONS

- OPTIONS
- Living room bump out
 - Large dormer
 - Eyebrow roof
 - Front door
 - Window grills
 - 5 1/2" Window trim
 - Window grills
 - Shake vinyl siding
 - Appliances



2 BEDROOMS, 2 BATHROOMS
1176 SQ FT

ML205

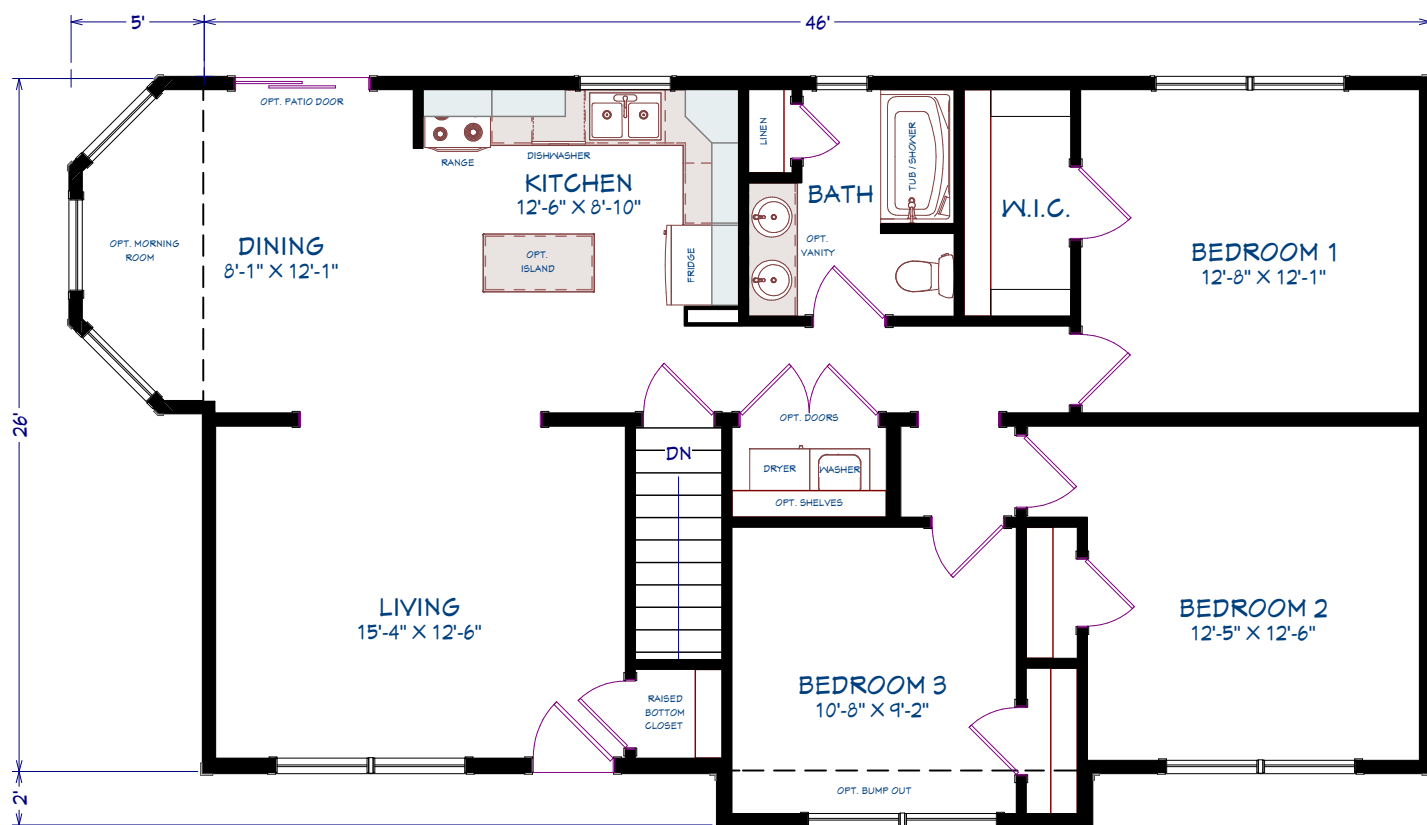
BUNGALOW / RANCH



3 BEDROOMS
1 BATHROOM
1,196 SQUARE FEET
46' x 26' DIMENSIONS

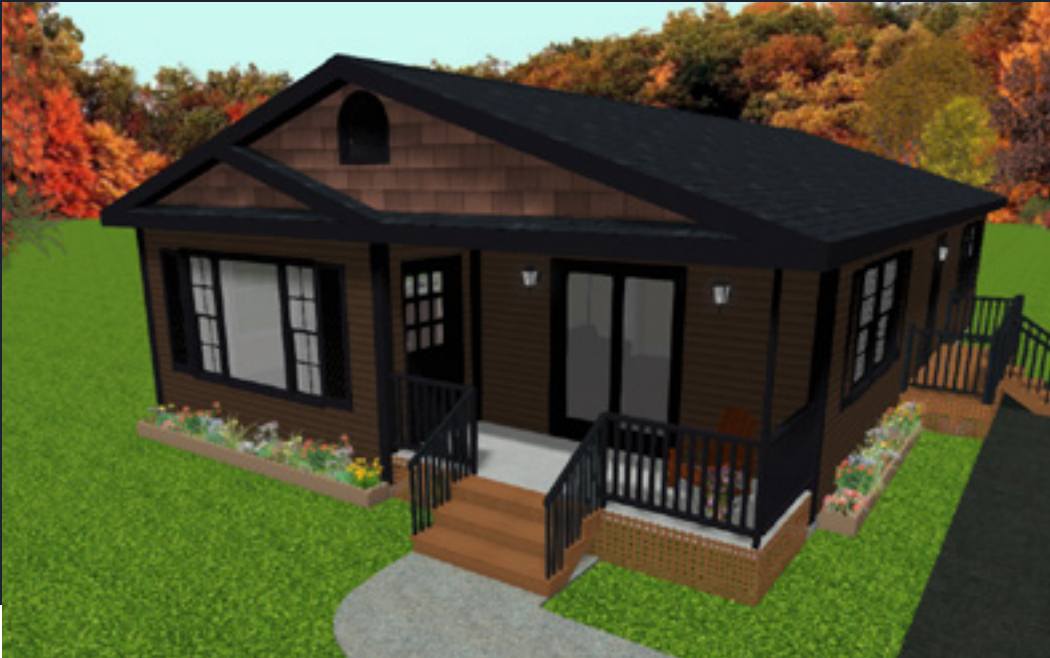
OPTIONS

Morning room
Bedroom bump out
Large dormer
3 1/2" Window and door trim
Coloured siding accessories
Stone vinyl siding
Appliances
No window grills



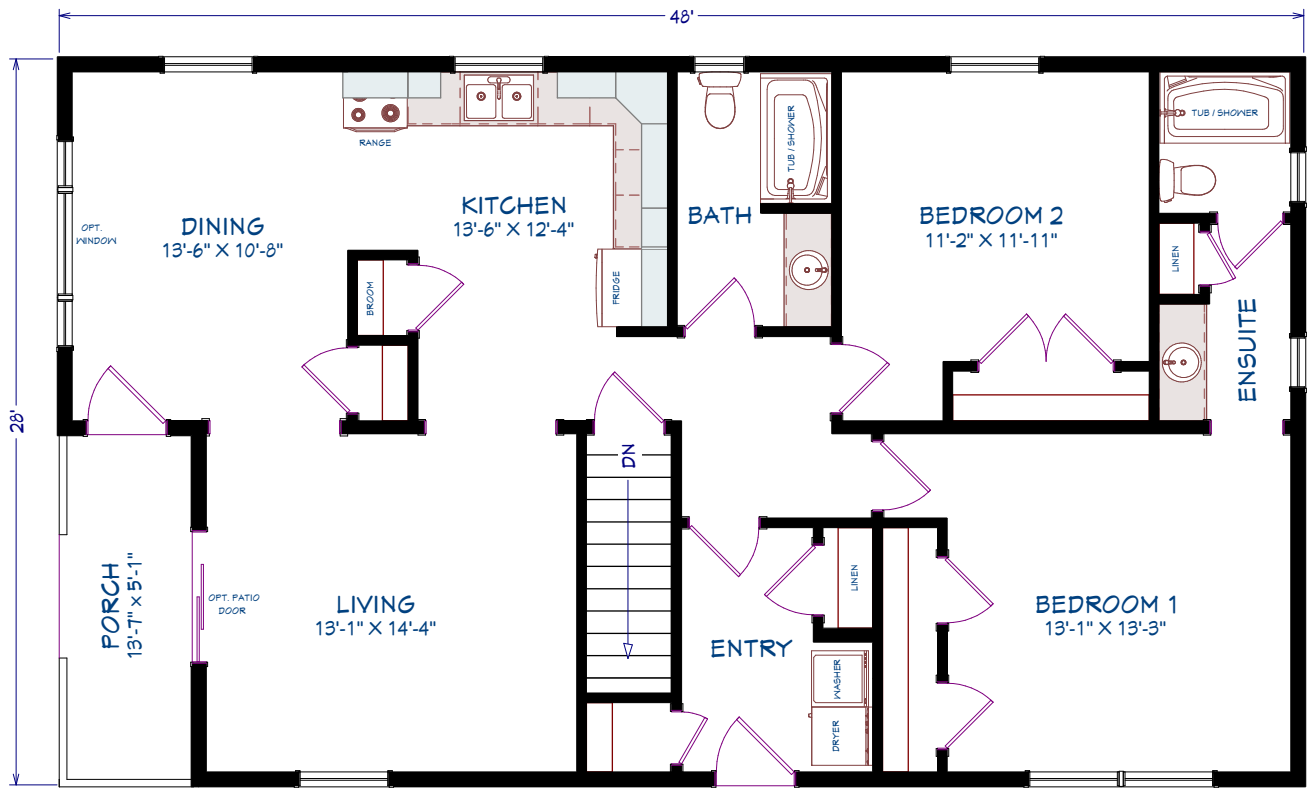
3 BEDROOMS, 1 BATHROOM
1196 SQ FT

ML206
BUNGALOW / RANCH



2 BEDROOMS
2 BATHROOMS
1,274 SQUARE FEET
48'43" x 28' DIMENSIONS

- OPTIONS
- Large dormer
 - Eyebrow roof
 - Dustpan roof
 - Rear door glass
 - Window and door colour
 - Coloured siding accessories
 - Patio door
 - Picture window
 - Exterior gable vent
 - Shake vinyl siding
 - Appliances



2 BEDROOMS, 2 BATHROOMS
1274 SQ FT

ML207

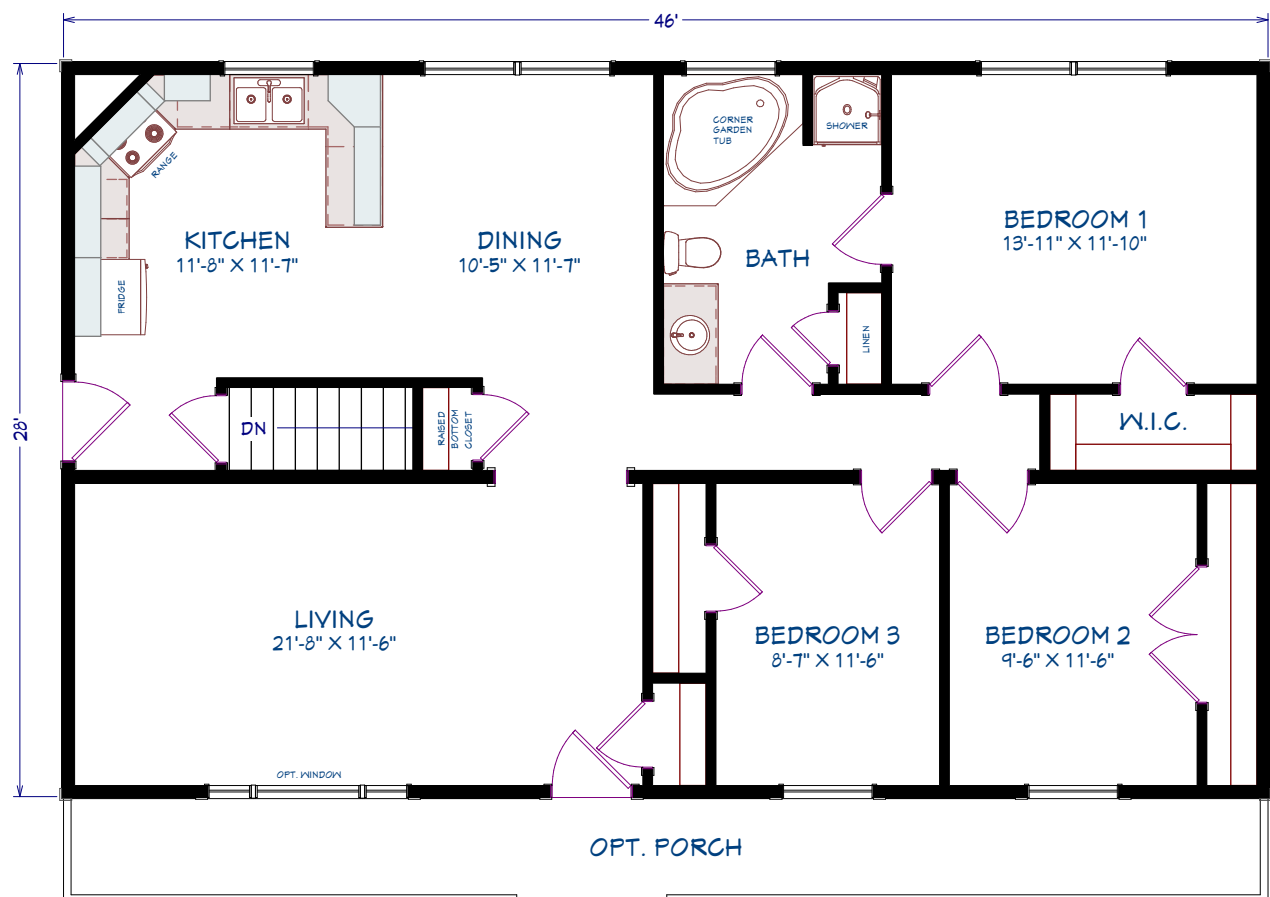
BUNGALOW / RANCH



3 BEDROOMS
1 BATHROOM
1,288 SQUARE FEET
46' x 28' DIMENSIONS

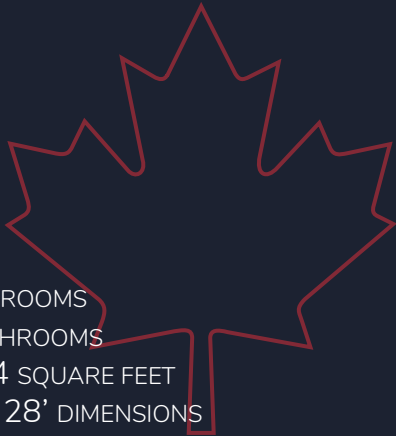
OPTIONS

Front porch
Queen Anne window grills
Full glass front door
Patio door
3 1/2" Window and door trim
Appliances



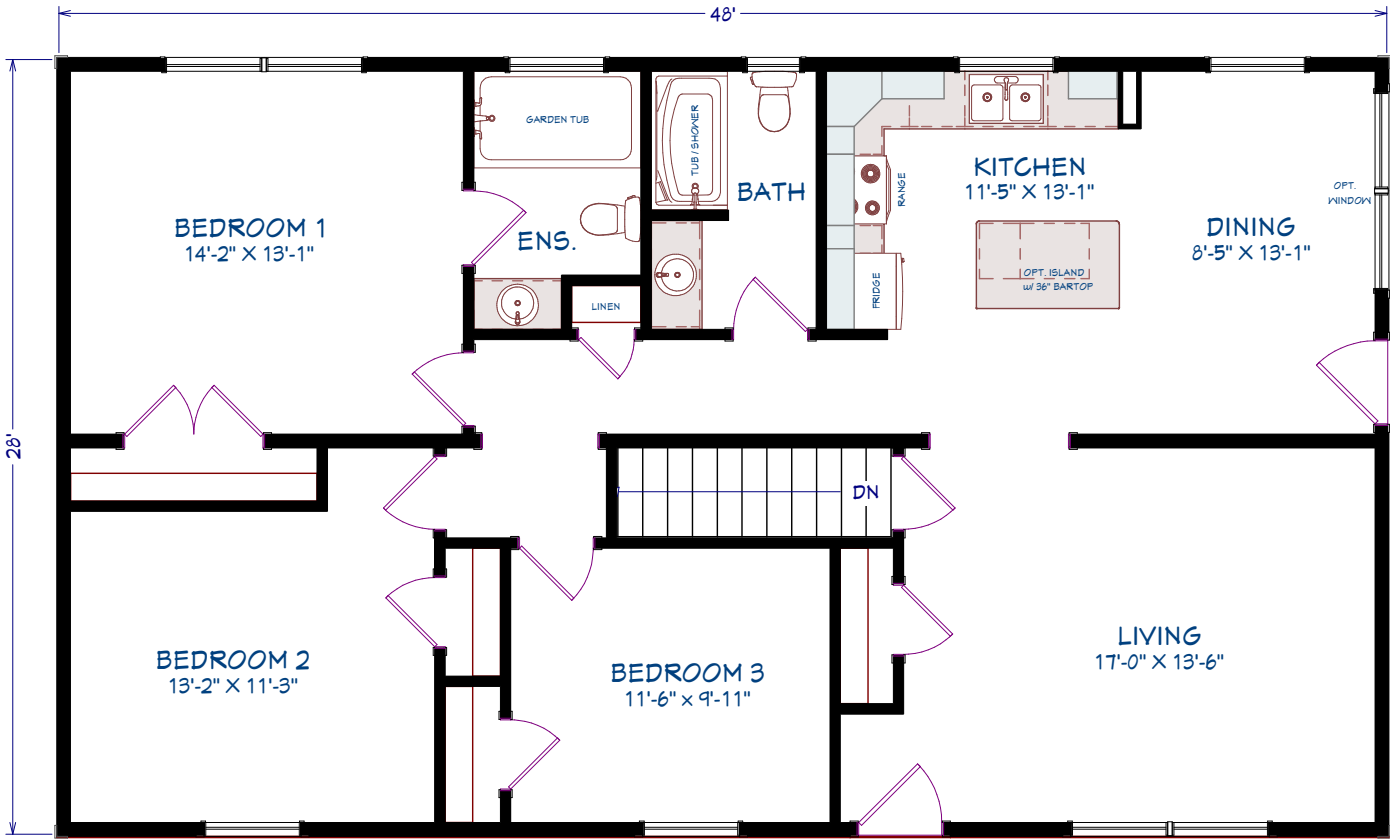
3 BEDROOMS, 1 BATHROOM
1288 SQ FT

ML208
BUNGALOW / RANCH



3 BEDROOMS
2 BATHROOMS
1,344 SQUARE FEET
48' x 28' DIMENSIONS

- OPTIONS
- Large dormer
 - Eyebrow roof
 - Octagon louver
 - Front door ¾ glass
 - Window and door trim colour
 - Coloured siding accessories
 - Stone vinyl siding
 - Extra coach light
 - Second dining room window
 - Upper window grills
 - Appliances



3 BEDROOMS, 2 BATHROOMS
1344 SQ FT

ML209

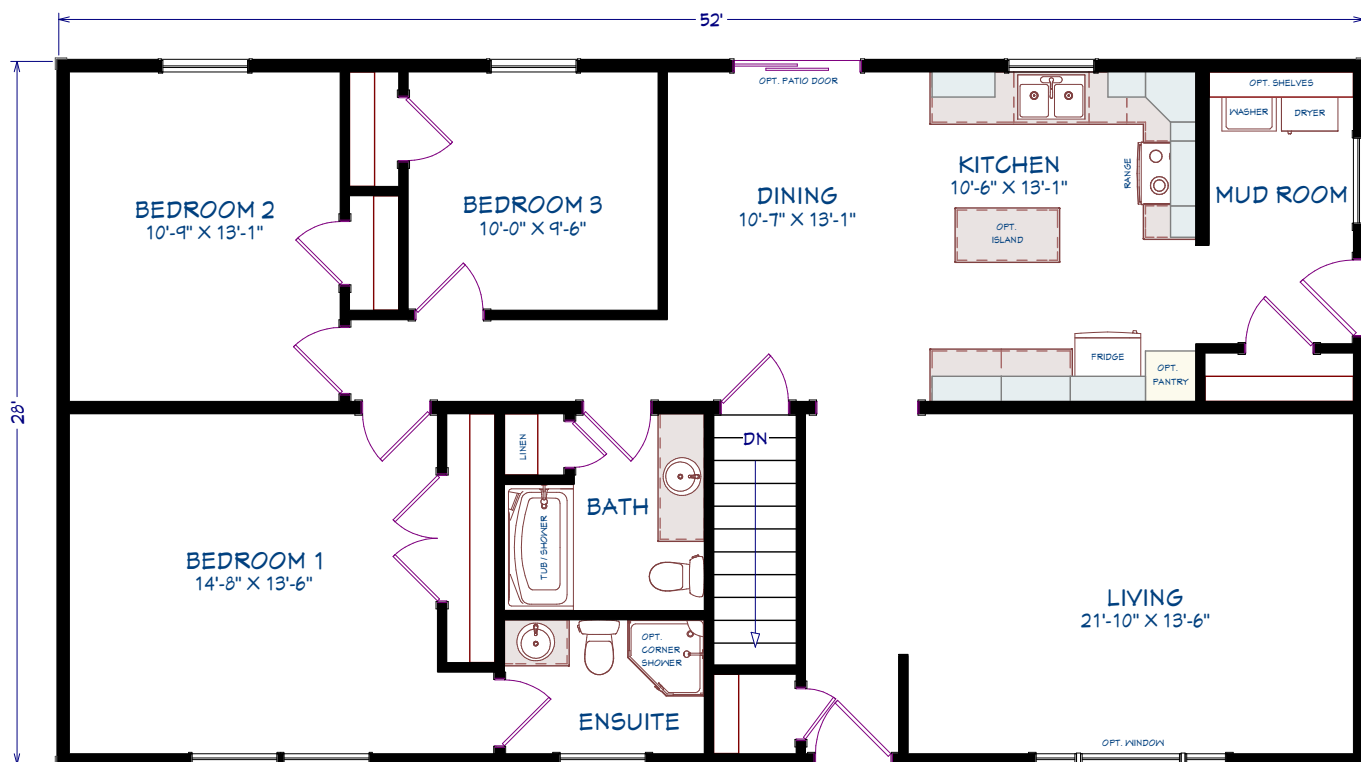
BUNGALOW / RANCH



3 BEDROOMS
2 BATHROOMS
1,456 SQUARE FEET
52' x 28' DIMENSIONS

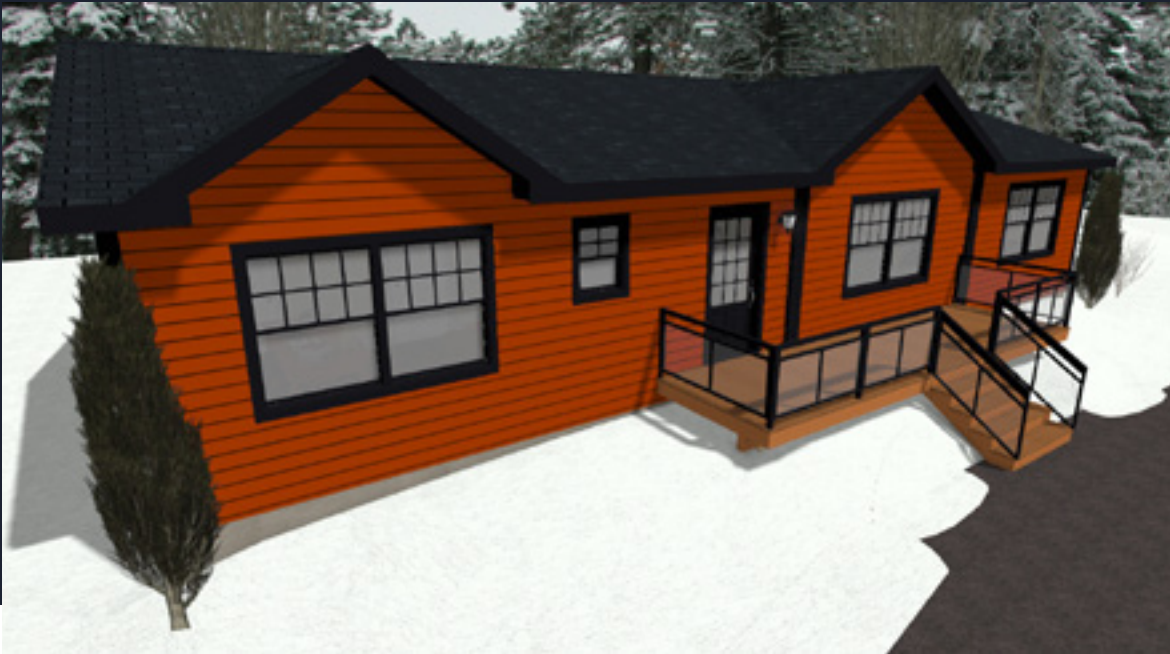
OPTIONS

Large dormer
Eyebrow roof
Window and door trim colour
Coloured siding accessories
Patio door
Extra coach light
Living room picture window
Queen Anne window grills
Appliances



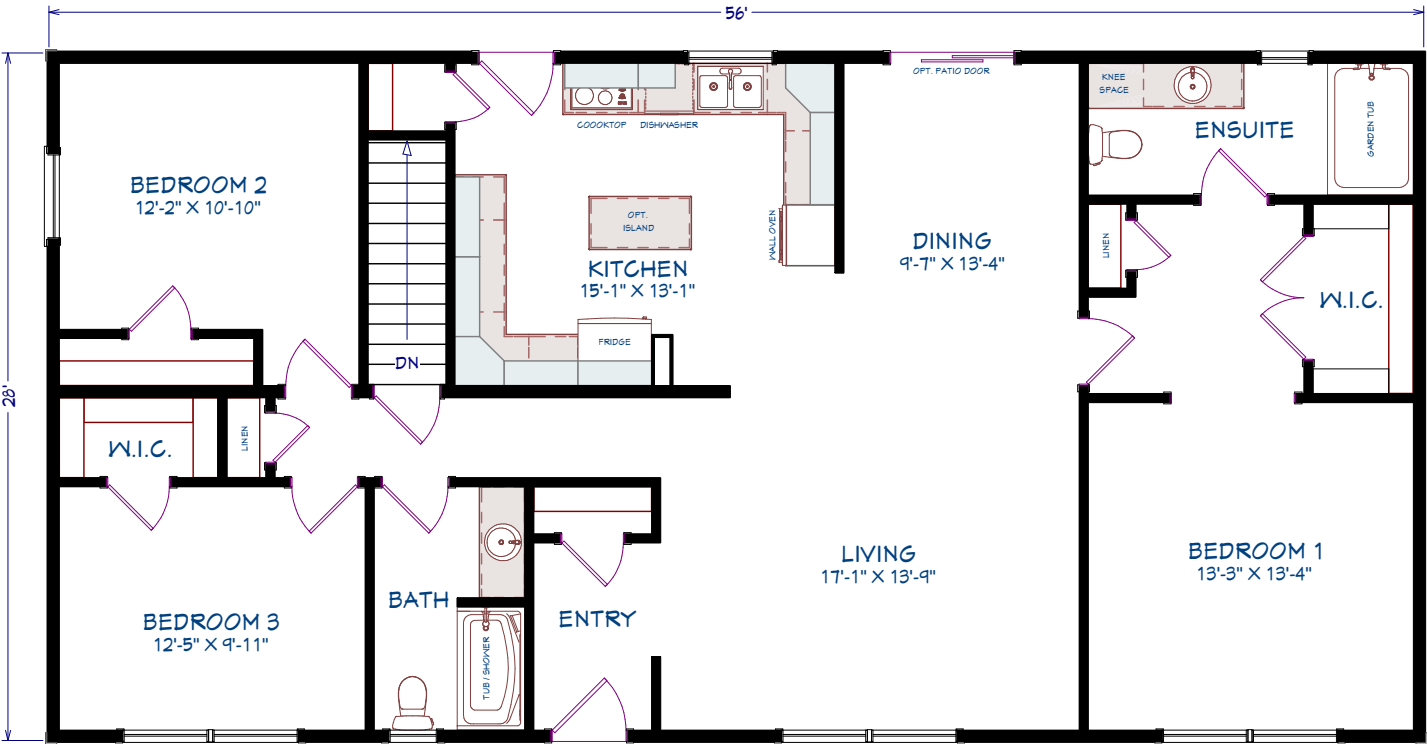
3 BEDROOMS, 2 BATHROOMS
1456 SQ FT

ML210
BUNGALOW / RANCH



3 BEDROOMS
2 BATHROOMS
1,568 SQUARE FEET
56' x 28' DIMENSIONS

- OPTIONS
- Large dormer
 - Small dormer
 - Pillars
 - Front door 3/4 glass
 - Window and door colour
 - Coloured siding accessories
 - Upper window grills
 - 5 1/2 Window trim
 - Patio door
 - Appliances



3 BEDROOMS, 2 BATHROOMS
1568 SQ FT

ML211

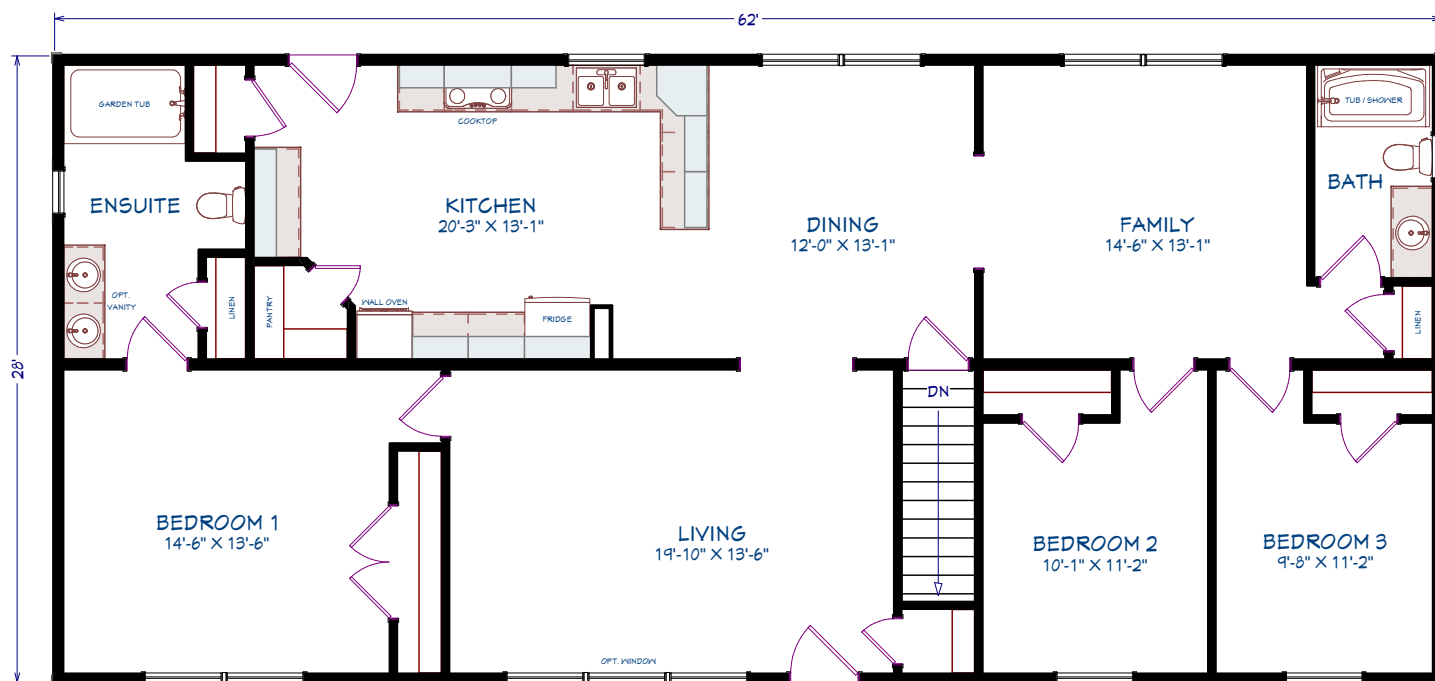
BUNGALOW / RANCH



3 BEDROOMS
2 BATHROOMS
1,736 SQUARE FEET
62' x 28' DIMENSIONS

OPTIONS

Large dormer
Eyebrow roof
Dustpan roof
Front door ¾ glass
Mulled living room window
Upper window grills
5 ½" Window trim
Shake vinyl siding
Extra coach light
Appliances



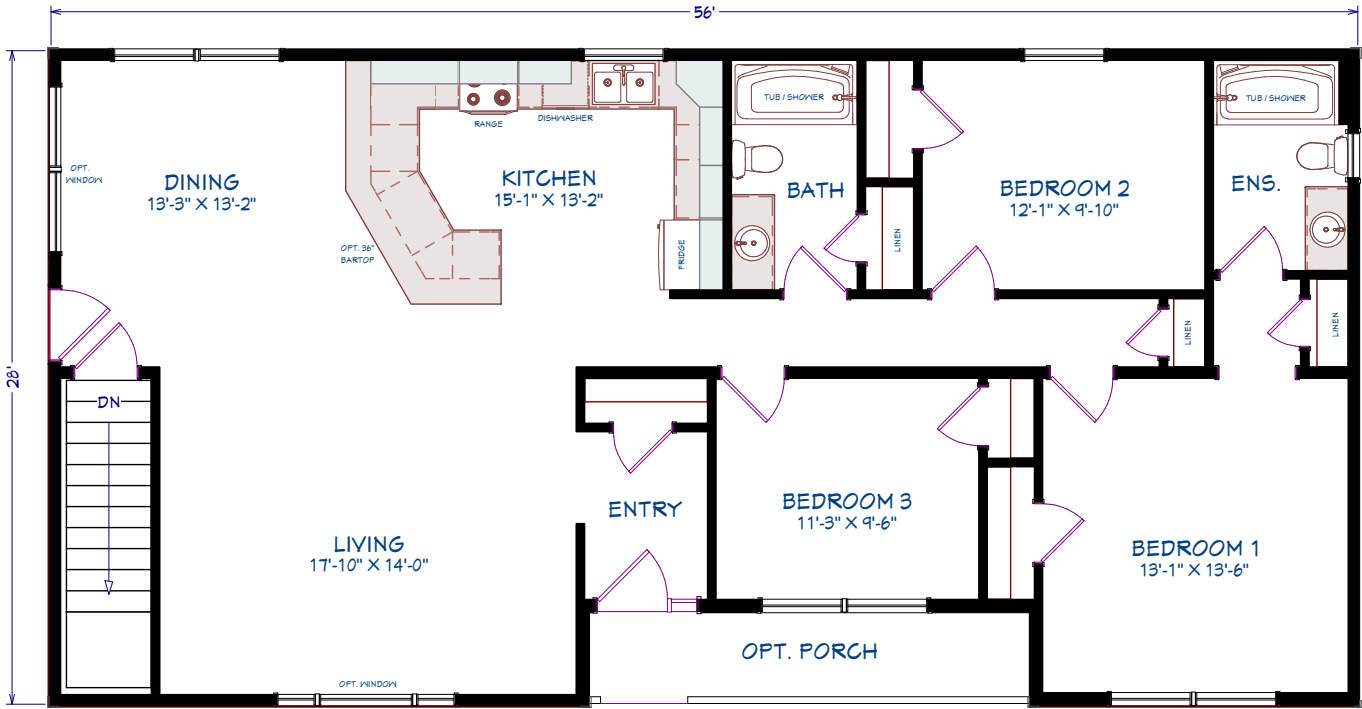
3 BEDROOMS, 2 BATHROOMS
1736 SQ. FT.

ML212
BUNGALOW / RANCH



3 BEDROOMS
2 BATHROOMS
1,492 SQUARE FEET
56' x 28'24' DIMENSIONS

- OPTIONS
- Large dormer
 - Gable vent
 - Porch
 - Front door sidelight
 - Living room picture window
 - Second dining room window
 - Window and door colour
 - Window pediments
 - Stone vinyl siding
 - Coloured siding accessories
 - Appliances



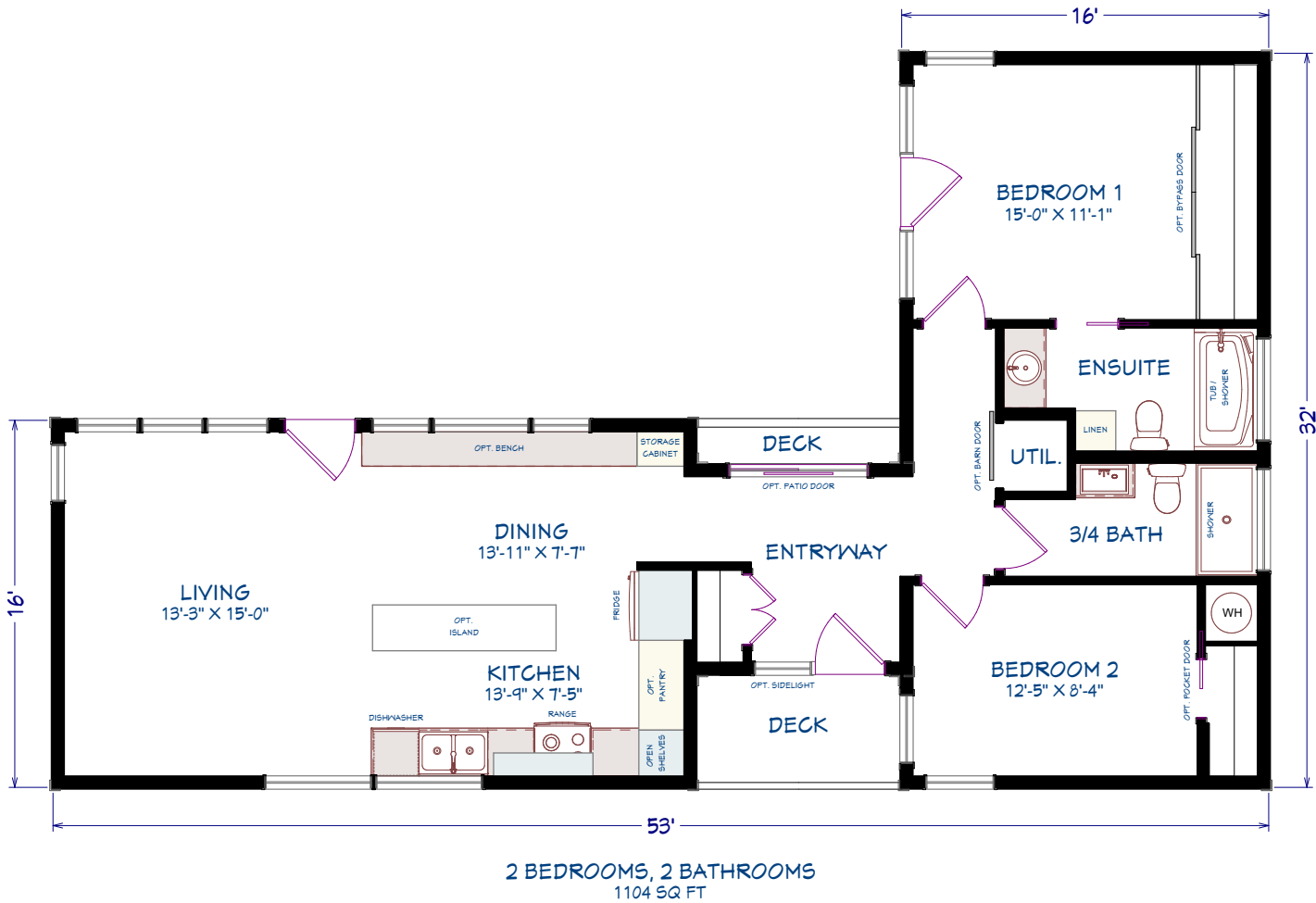
3 BEDROOMS, 2 BATHROOMS
1492 SQ. FT.

OASIS
BUNGALOW / RANCH

1,104 SQUARE FEET
2 BEDROOMS
2 BATHROOMS

OPTIONS
Kitchen island
Bench
Pantry
Oversized windows

- Decks
- Optional doors
- Stone vinyl siding
- Appliances

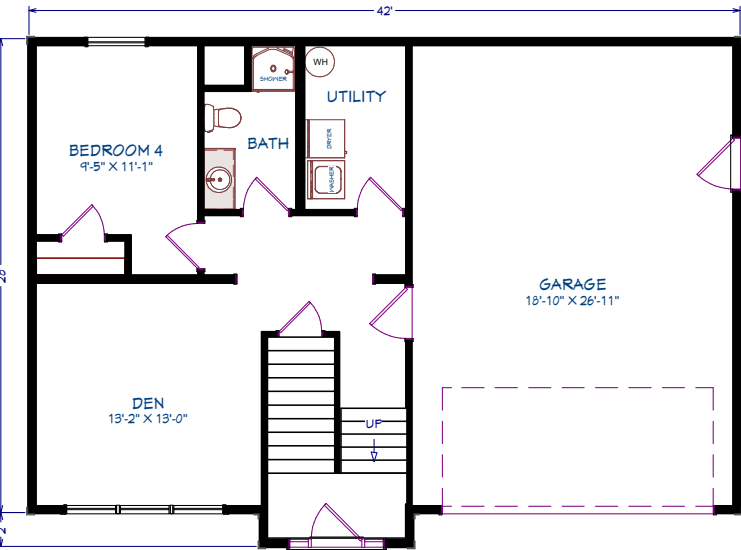


ML321
SPLIT ENTRY

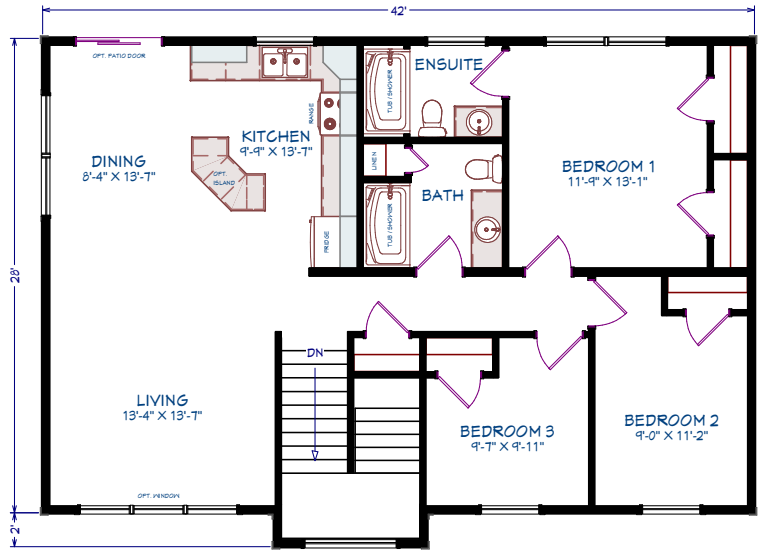


3 BEDROOMS
2 BATHROOMS
1,194 SQUARE FEET (1st Floor)
42' x 28' DIMENSIONS

- OPTIONS
- Front door and side lights
 - Transom window over front door
 - Mulled living room window
 - Upper window grills
 - 3 ½" Window trim
 - Roof over onsite garage door
 - Second coach light
 - Patio door
 - Appliances
 - Knee wall and basement material



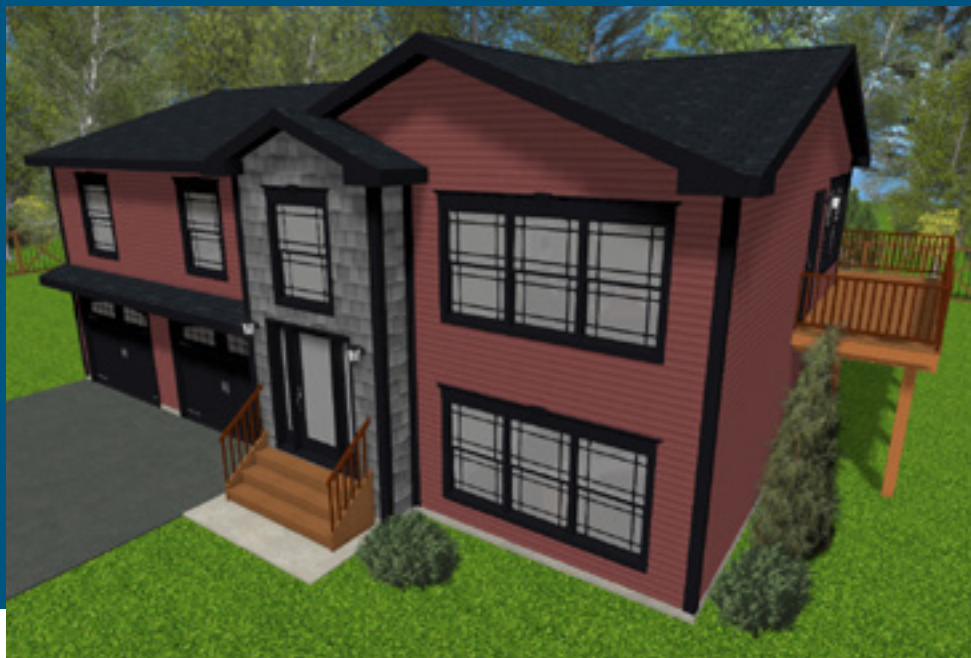
SUGGESTED LOWER LEVEL



MAIN FLOOR
3 BEDROOMS, 2 BATHROOMS
1194 sq ft

ML322

SPLIT ENTRY

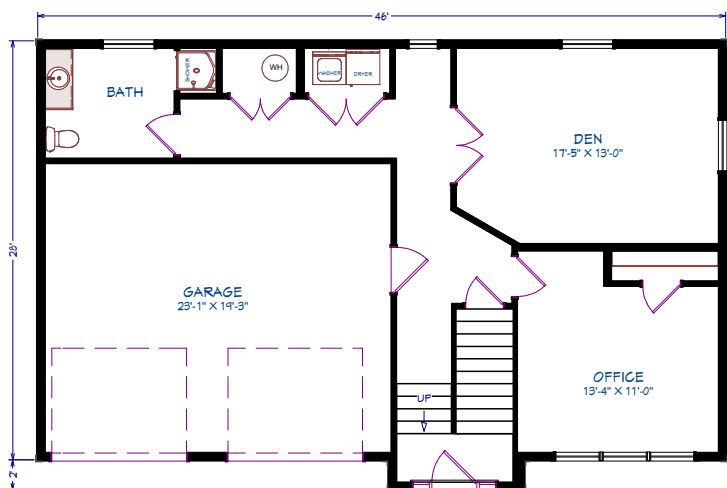


3 BEDROOMS
2 BATHROOMS
1,306 SQUARE FEET (1st Floor)
46' x 28' DIMENSIONS

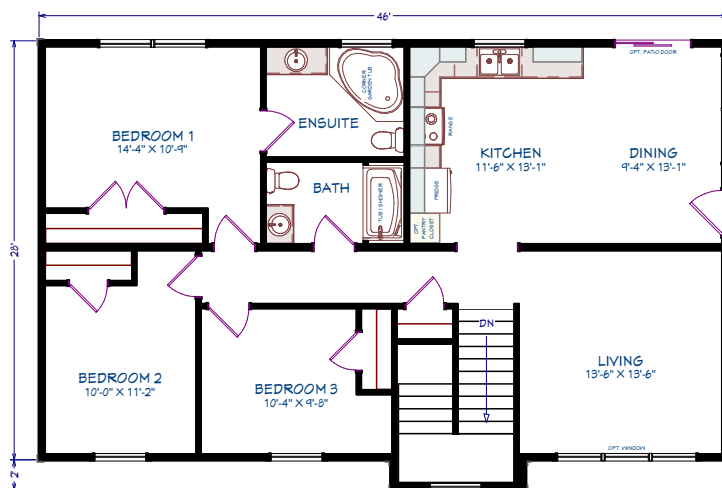
OPTIONS

Shake vinyl siding
Large dormer
Front door full glass and sidelights
Window above front door
Roof over onsite garage doors
Queen Anne window grills
Second coach light
3 ½" Window trim
Mulled living room window

Window and door trim colour
Coloured siding accessories
Patio door
Window pediments
Appliances
Knee wall and basement material



SUGGESTED LOWER LEVEL



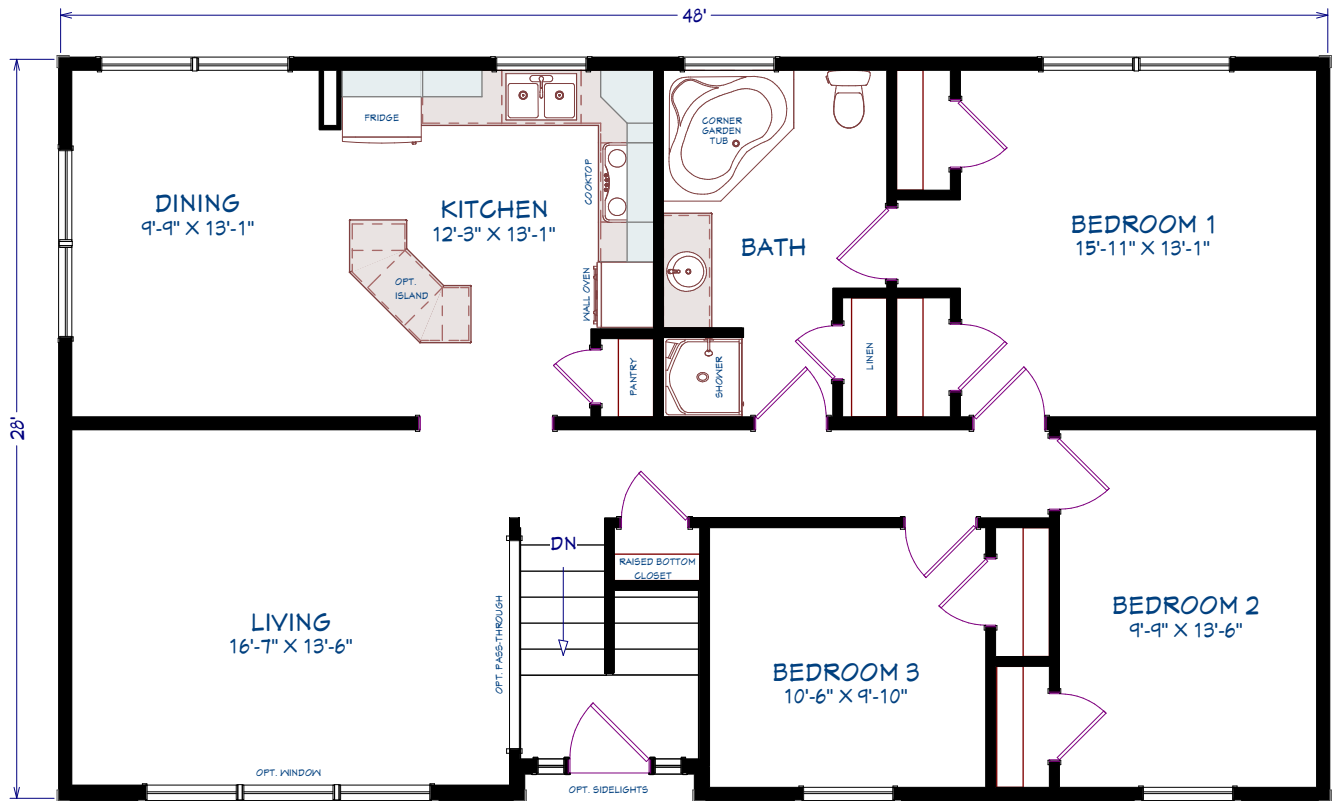
MAIN FLOOR
3 BEDROOMS, 2 BATHROOMS
1306 sq ft

ML323
SPLIT ENTRY



3 BEDROOMS
1 BATHROOM
1,337 SQUARE FEET
48' x 28' DIMENSIONS

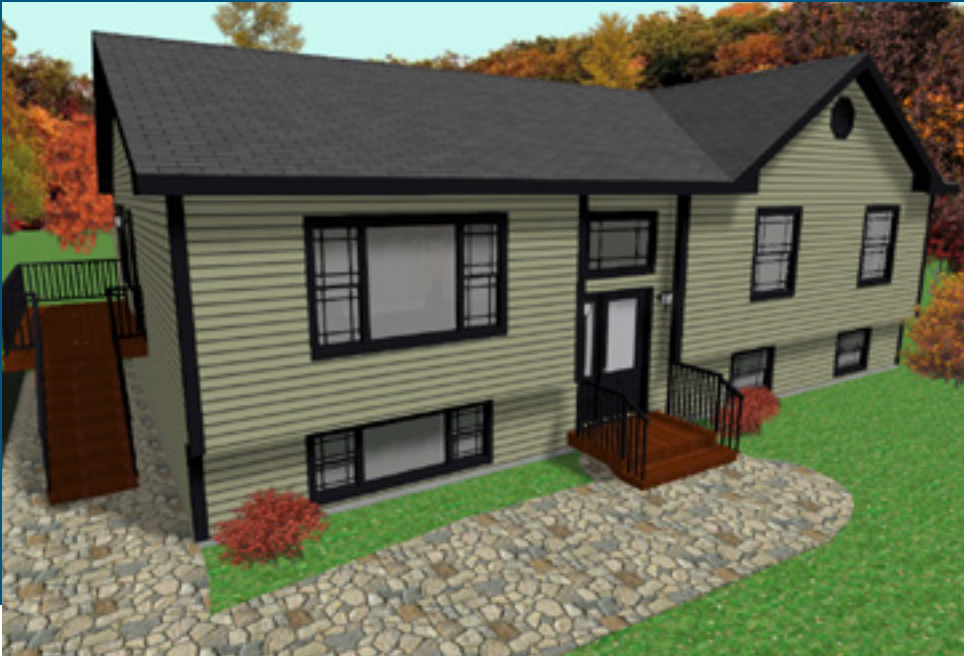
- OPTIONS
- Large dormer
 - Front door ¾ glass and sidelights
 - 1/2 moon window
 - 3 ½" Window trim
 - Second coach light
 - Mulled living room window
 - Second dining room window
 - Knee wall and basement material
 - Appliances



3 BEDROOMS, 1 BATHROOM
1337 SQ FT

ML324

SPLIT ENTRY

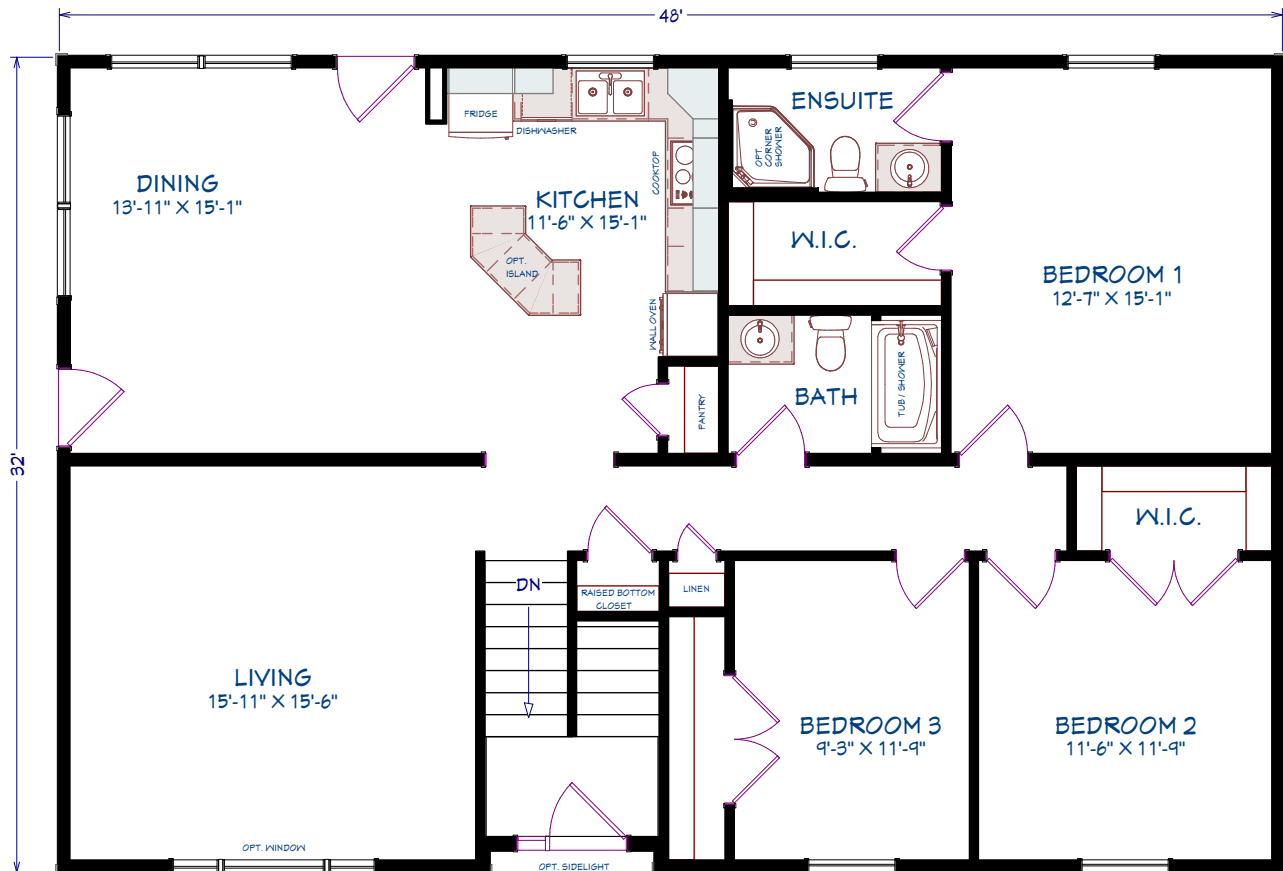


3 BEDROOMS
2 BATHROOMS
1,528 SQUARE FEET
48' x 32' DIMENSIONS

OPTIONS

Large dormer
Octagonal gable vent
Front door ¾ glass and side light
3 ½" Window trim
Window and door trim colour
Living room picture window
Second coach light
Window above front door
Queen Anne window grills
Coloured siding accessories

Second dining room window
Second dining room exterior door
Appliances
Knee wall and basement material



3 BEDROOMS, 2 BATHROOMS
1528 SQ. FT.

NOTES



Notes section containing multiple horizontal dotted lines for writing.



WELCOME HOME

All Maple Leaf Home interiors are designed to your exact specifications. Built the way you want it, from flooring to appliances.

MAPLE LEAF  HOMES

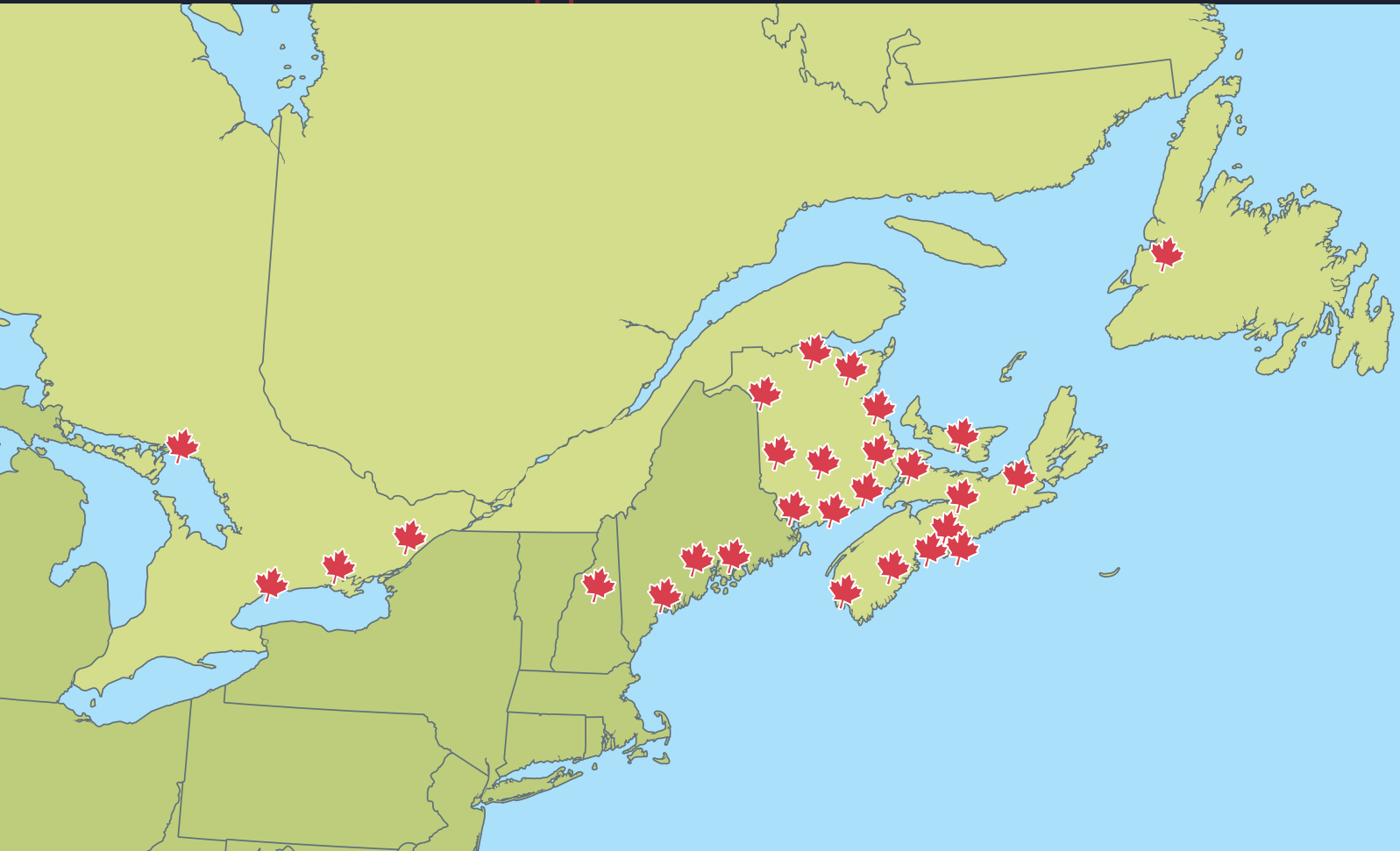


MAPLE LEAF HOMES

You have the option of choosing from our large selection of some of the best designs in the industry or, if you have your own plans, we can work with you to build your home, your way.

Once you choose the floor plan you like, you get to pick your options. There are hundreds of options to choose from, everything from the colour of your siding to the hardware on your kitchen cabinets. We will build your home, your way.

To start designing your new home, visit our website at www.mapleleafhomes.ca to find a retailer in your area.



MAPLE LEAF HOMES

655 Wilsey Road
Fredericton, NB
Canada, E3B 7K3

Tel 506 459 1335
Email hello@mlhomes.ca

NOTE: Maple Leaf Homes reserves the right to make changes to this brochure without prior notice and without incurring any obligations to any previous, present or future customers as the result of any changes made.

RETAILER: